



**METHODIST
UNIVERSITY**

FACT BOOK

2010-2011

Office of Institutional Research
and Effectiveness

TABLE OF CONTENTS

METHODIST UNIVERSITY: PAST, PRESENT, AND FUTURE	1
ENROLLMENT	2
ENROLLMENT HISTORY FALL 1991-2010.....	3
ENROLLMENT TRENDS FALL 2001-2010 HEADCOUNT	4
ENROLLMENT TRENDS FALL 2001-2010	5
ENROLLMENT TRENDS SPRING 2002-2011 HEADCOUNT	6
ENROLLMENT TRENDS SPRING 2001-2011	7
ENROLLMENT BY CLASS FALL 2006-2010	8
STUDENT PROFILE INFORMATION FALL 2006-2010	9
INTERNATIONAL STUDENTS BY COUNTRY FALL 2006-2010.....	10-11
STUDENTS' GEOGRAPHIC ORIGIN FALL 2006-2010	12
NORTH CAROLINA STUDENTS BY COUNTY FALL 2006-2010	13-14
STUDENT HOUSING FALL 2006-2010	15
STUDENT HOUSING SPRING 2007-2011	15
FIRST-TIME STUDENTS	16
FIRST-TIME STUDENT TRENDS FALL 2005-2010	17-18
FIRST-TIME FRESHMEN PROFILE FALL 2010.....	19
COMPARISON OF SAT SCORES OF FIRST-TIME FRESHMEN FALL 2005-2010	20
FIRST-TIME TRANSFERS BY TRANSFER INSTITUTION FALL 2006-2010.....	21-23
MIGRATION OF FIRST-TIME FRESHMEN TRANSFERRING FROM METHODIST UNIVERSITY FALL 2005-2009	24-27
RETENTION	28
FIRST-TIME FULL-TIME FRESHMEN RETENTION FALL 2004-2010	29
PERSISTENCE AND GRADUATION RATE COHORT OF 2004 FULL-TIME, FIRST-TIME FRESHMEN	30-31
ACADEMIC	32
ACADEMIC MAJORS BY SCHOOL FALL 2006-2010.....	33-36
ACADEMIC MAJORS BY SCHOOL SPRING 2007-2011	37-40
CREDIT HOUR PRODUCTION BY DISCIPLINE FALL 2006-2010	41-42
CREDIT HOUR PRODUCTION BY DISCIPLINE SPRING 2007-2011.....	43-44
MU FINAL GRADE REPORT FALL 2010 SUMMARY	45
MU FINAL GRADE REPORT SPRING 2011 SUMMARY	46
GRADUATES	47
ASSOCIATE'S DEGREES AWARDED ACADEMIC YEAR 2006-07 – 2010-11	48
BACHELOR'S DEGREES AWARDED ACADEMIC YEAR 2006-07 – 2010-11	49-50
MASTER'S DEGREES AWARDED ACADEMIC YEAR 2006-07 – 2010-11.....	51
PLACEMENT INFORMATION 2008-2009.....	52-55
PLACEMENT INFORMATION 2009-2010.....	56-59

TABLE OF CONTENTS (continued)

FINANCIAL..... 60

METHODIST UNIVERSITY BUDGET 2009-2010..... 61

DISTRIBUTION OF EXPENDITURES BY FUNCTION 1998-2010..... 62

DISTRIBUTION OF EXPENDITURES BY FUNCTION FISCAL YEAR 2009-2010..... 62

CONSOLIDATED STATEMENTS OF ACTIVITIES
FOR THE YEAR ENDED JUNE 30, 2010 63

FACULTY AND STAFF..... 64

METHODIST UNIVERSITY EMPLOYEES BY
ASSIGNED POSITION 2006-07 – 2010-2011..... 65-66

UNIVERSITY EMPLOYEES BY OCCUPATIONAL CLASSIFICATION 67

FULL-TIME FACULTY BY RANK, GENDER, AND DEGREE FALL 2006-2010 68

DEVELOPMENT AND ALUMNI AFFAIRS 69

OFFICE OF DEVELOPMENT AND ALUMNI AFFAIRS 70

ALUMNI 70

ANNUAL FUND 71

ADDITIONAL INFORMATION..... 72

ACADEMIC LIBRARY RESOURCES 73

DID YOU KNOW METHODIST UNIVERSITY ATHLETICS 74

2009-10 INSIDE THE NUMBERS 74

METHODIST UNIVERSITY: PAST, PRESENT, AND FUTRE

Mindset

Since Methodist College became Methodist University in 2006, the faculty and staff have implemented a Quality Enhancement Plan and completed a self-study for reaffirmation of accreditation by the Southern Association of Colleges and Schools. A Strategic Planning Committee has begun drafting a new five-year Strategic Plan for the university, which will enhance the more than 70 academic majors and concentrations Methodist now offers in five schools: School of Arts and Humanities, Reeves School of Business and Economics, School of Public Affairs, School of Science and Development, and School of Graduate Studies. A General Education Committee is studying the university's liberal arts core curriculum requirements. The Board of Trustees has made the development of a "culture of excellence" its top priority for Methodist University.

The Past

Methodist University was chartered as Methodist College November 1, 1956. The school opened in 1960 and graduated its first class in 1964. On the eve of its 50th birthday, the Board of Trustees voted to change the name of the school to Methodist University. Methodist now offers master's degrees in physician assistant studies, justice administration, and business administration. In March 2009, the university published *From Cotton Field to University*, a history of the school's first 50 years (1956-2006) written over a six-year period by Bill Billings.

The Present

In 2009, the faculty, staff and students at Methodist University are working hard to ensure that the school maintains its reputation for academic excellence and continues to attract more and better students. In 2007, the school opened the Nimocks Fitness Center and a Science Building addition. Enrollment has leveled off at about 2,100 students: 1,500 in the day program and 600 in the evening. Enrollment in online courses has grown to 250.

Methodist continues to excel in intercollegiate athletics, competing in 19 intercollegiate sports. In 2008-09, Methodist participated in two NCAA Division III National Tournaments at the team level: men's golf and women's golf.

Major gifts from persons who support Methodist's mission of developing the mind, body, and spirit have reached record levels in recent years, making scholarships and new buildings possible. Construction is now under way on the William F. Bethune Center for the Visual Arts and a football field house.

Methodist faculty, staff, and students participate in numerous civic organizations and service projects in the Fayetteville area. About 3,000 alumni live in Fayetteville and Cumberland County.

The Future

During the twenty-first century, and under the new leadership of President Ben Hancock, Methodist University will hold fast to its liberal arts tradition and Christian values, while embracing new technology as a means of enhancing lifelong learning. Additional graduate programs and in-service training courses will attract new students. MU at Night and online courses will serve increasing numbers of non-traditional students.

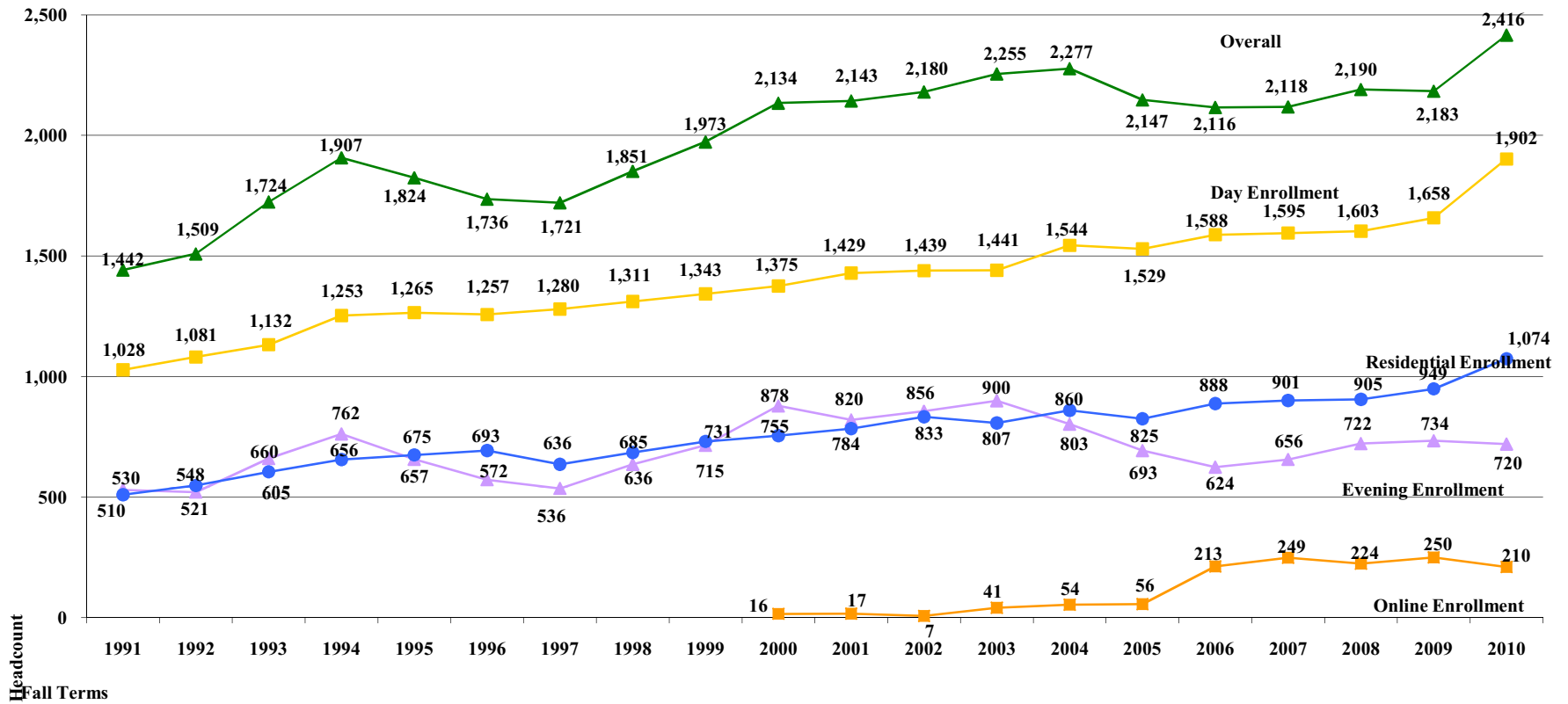
Methodist will remain a valuable community resource and a center for the cultural arts. The Theatre, Art and Music Departments; the Center for Entrepreneurship; Southern Writers Symposium; Fayetteville Symphony; Cumberland Oratorio Singers; and summer sports camps will bring thousands to the campus annually.

Those associated with Methodist University believe a bright future awaits students who choose Truth and Virtue (our credo) and are "liberally educated" to live full and meaningful lives.

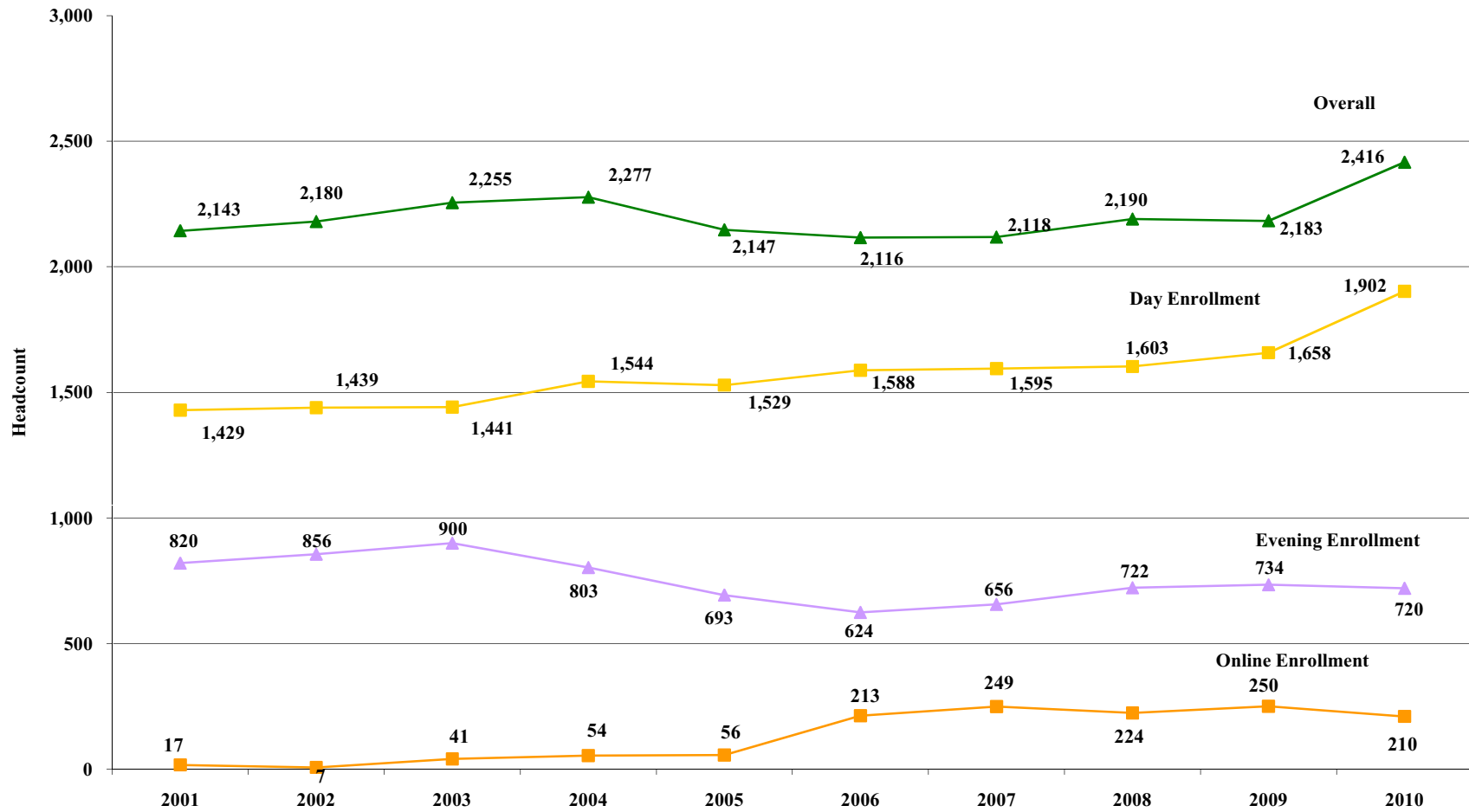
ENROLLMENT



ENROLLMENT HISTORY FALL TERMS (1991 - 2010)



ENROLLMENT TRENDS FALL 2001 - 2010 HEADCOUNT



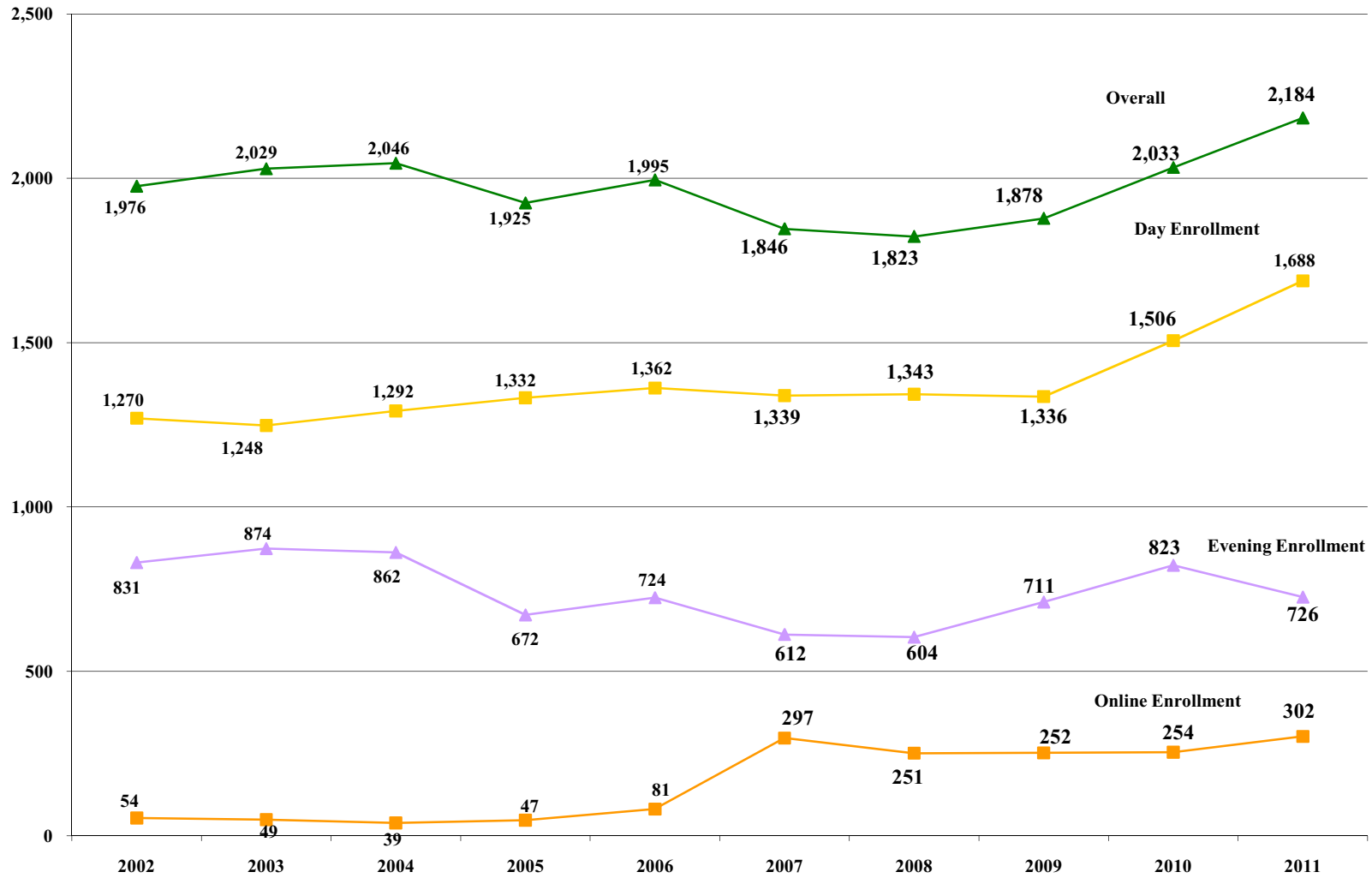
**ENROLLMENT TRENDS
FALL 2001 - 2010**

	2001	2002	2003	2004	2005	2006	2007	2008	2009	2010	% Change 2009-2010	% Change 2006-2010	% Change 2001-2010
HEADCOUNT													
Overall Non-Duplicate	2,143	2,180	2,255	2,277	2,147	2,116	2,118	2,190	2,183	2,416	10.67%	14.18%	12.74%
Day	1,429	1,439	1,441	1,544	1,529	1,588	1,595	1,603	1,658	1,902	14.72%	19.77%	33.10%
Evening	820	856	900	803	693	624	656	722	734	720	-1.91%	15.38%	-12.20%
Online	17	7	41	54	56	213	249	224	250	210	-16.00%	-1.41%	1135.29%
Graduate	10	19	45	62	86	120	122	158	182	199	9.34%	65.83%	NA
FTE*													
Overall	1,879.00	1,918.00	1,942.00	2,006.75	1,925.50	1,943.25	1,945.00	1,984.00	2,025.75	2,067.00	2.04%	6.37%	10.01%
Day	1,376.25	1,394.75	1,410.25	1,498.25	1,490.75	1,514.75	1,522.75	1,532.25	1,579.75	1,825.50	15.56%	20.51%	32.64%
Evening	527.00	552.25	545.75	508.80	453.00	414.00	423.00	443.50	466.25	436.75	-6.33%	5.50%	-17.13%
Online	5.00	1.75	11.00	14.75	14.50	64.50	72.75	70.25	78.50	59.00	-24.84%	-8.53%	1080.00%
Graduate**	10.00	19.00	45.00	62.00	84.00	110.75	113.50	144.00	166.50	179.00	7.51%	61.63%	1690.00%
CREDIT HOURS													
Overall	27,382	27,935	27,948	29,084	28,226	28,492	28,825	29,055	29,975	33,181	10.69%	16.46%	21.18%
Day	20,835	20,944	21,063	22,505	22,303	22,532	22,545	22,481	23,310	27,145	16.45%	20.48%	30.29%
Evening	6,534	6,909	6,741	6,393	5,797	5,234	5,428	5,679	5,751	5,360	-6.80%	2.41%	-17.97%
Online	60	21	132	177	174	726	852	811	920	678	-26.30%	-6.61%	1030.00%
Graduate	210	332	758	1,029	1,264	1,540	1,633	1,949	2,280	2,424	6.34%	57.40%	1054.29%

* UG FTE calculation based on 0.1-5 credit hours=.25 FTE, 6-8 credit hours =.50 FTE, 9-11=.75 FTE, 12 and over credit hours=1.0 FTE.

** GR FTE calculation based on 0.1-5 credit hours=.25 FTE, 3-5.99 credit hours =.50 FTE, 6-8.99=.75 FTE, 9 and over credit hours=1.0 FTE.

ENROLLMENT TRENDS SPRING 2002 - 2011 HEADCOUNT



**ENROLLMENT TRENDS
SPRING 2001 - 2011**

	2001	2002	2003	2004	2005	2006	2007	2008	2009	2010	2011	% Change 2010-2011	% Change 2007-2011	% Change 2001-2011
HEADCOUNT														
Overall Non-Duplicate	1,979	1,976	2,029	2,046	1,925	1,995	1,846	1,823	1,878	2,033	2,184	7.43%	18.31%	10.36%
Day	1,225	1,270	1,248	1,292	1,332	1,362	1,339	1,343	1,336	1,506	1,688	12.08%	26.06%	37.80%
Evening	879	831	874	862	672	724	612	604	711	823	726	-11.79%	18.63%	-17.41%
Online	16	54	49	39	47	81	297	251	252	254	302	18.90%	1.68%	NA
Graduate		7	17	35	52	78	90	80	149	153	199	30.07%	121.11%	NA
Special	--	--	--	--	--	--	--	--	31	0	0	0.00%	NA	NA
FTE*														
Overall	1,727.75	1,728.25	1,728.25	1,765.00	1,721.25	1,755.25	1,683.50	1,671.00	1,689.50	1,851.50	1,999.50	7.99%	18.77%	15.73%
Day	1,179.75	1,215.25	1,218.25	1,255.75	1,287.00	1,285.00	1,303.25	1,286.50	1,260.50	1,411.00	1,619.00	14.74%	24.23%	37.23%
Evening	578.50	540.50	534.75	534.75	443.25	465.50	404.50	373.50	429.50	480.75	411.25	-14.46%	1.67%	-28.91%
Online	4.25	14.50	14.50	10.00	27.00	60.25	90.25	82.75	77.75	75.50	81.50	7.95%	-9.70%	NA
Graduate	--	7.00	17.00	35.00	52.00	65.50	81.75	75.75	130.25	126.00	142.50	13.10%	74.31%	NA
Special	--	--	--	--	--	--	--	--	12	0	0	0.00%	NA	NA
CREDIT HOURS														
Overall	25,068	25,429	25,211	25,848	25,762	25,967	25,466	25,220	24,768	27,490	29,926	8.86%	17.51%	19.38%
Day	17,755	18,462	18,388	19,082	19,806	19,424	19,332	19,530	18,373	20,623	23,970	16.23%	24.00%	35.01%
Evening	7,262	6,680	6,660	6,646	5,632	5,820	5,096	4,695	5,374	5,981	5,041	-15.72%	-1.08%	-30.58%
Online	51	174	174	120	324	723	1,038	995	928	886	920	3.84%	-11.37%	NA
Graduate	--	122	312	661	1,089	1,054	1,176	1,185	1,685	1,559	2,076	33.16%	76.53%	NA
Special	--	--	--	--	--	--	--	--	93	0	0	0.00%	NA	NA

* UG FTE calculation based on 0.1-5 credit hours=.25 FTE, 6-8 credit hours =.50 FTE, 9-11=.75 FTE, 12 and over credit hours=1.0 FTE.

** GR FTE calculation based on 0.1-5 credit hours=.25 FTE, 3-5.99 credit hours =.50 FTE, 6-8.99=.75 FTE, 9 and over credit hours=1.0 FTE.

**ENROLLMENT BY CLASS
FALL 2006 - FALL 2010**

HEADCOUNT	2006		2007		2008		2009		2010		% Change 2009-2010	% Change 2006-2010
	N	%	N	%	N	%	N	%	N	%		
First-time Freshmen	485	22.91%	437	20.63%	468	21.37%	490	22.45%	551	22.81%	12.45%	13.61%
Other Freshmen	233	11.01%	247	11.66%	225	10.27%	211	9.67%	491	20.32%	132.70%	110.73%
Freshmen Total	718	33.92%	684	32.29%	693	31.64%	701	32.11%	1042	43.13%	48.64%	45.13%
Sophomores	391	18.47%	406	19.17%	439	20.05%	415	19.01%	560	23.18%	34.94%	43.22%
Juniors	367	17.34%	310	14.64%	320	14.61%	367	16.81%	312	12.91%	-14.99%	-14.99%
Senior	461	21.78%	540	25.50%	477	21.78%	469	21.48%	257	10.64%	-45.20%	-44.25%
Special Unclassified	60	2.83%	56	2.64%	103	4.70%	49	2.24%	46	1.90%	-6.12%	-23.33%
Graduate	120	5.67%	122	5.76%	158	7.21%	182	8.34%	199	8.24%	9.34%	65.83%
Total	2,117		2,118		2,190		2,183		2,416		10.67%	14.12%

FTE	2006		2007		2008		2009		2010		% Change 2009-2010	% Change 2006-2010
	N	%	N	%	N	%	N	%	N	%		
First-time Freshmen	465.50	23.95%	430.75	22.15%	451.50	22.76%	481.75	23.78%	540.75	24.08%	12.25%	16.17%
Other Freshmen	187.50	9.65%	193.00	9.92%	168.25	8.48%	163.25	8.06%	425.50	18.94%	160.64%	126.93%
Freshmen Total	653.00	33.60%	623.75	32.07%	619.75	31.24%	645.00	31.84%	966.25	43.02%	49.81%	47.97%
Sophomores	370.50	19.07%	389.50	20.03%	413.50	20.84%	395.25	19.51%	532.00	23.69%	34.60%	43.59%
Juniors	356.00	18.32%	294.25	15.13%	310.50	15.65%	352.50	17.40%	299.50	13.33%	-15.04%	-15.87%
Senior	425.00	21.87%	501.00	25.76%	438.00	22.08%	443.50	21.89%	244.50	10.89%	-44.87%	-42.47%
Special Unclassified	28.00	1.44%	23.00	1.18%	58.25	2.94%	23.00	1.14%	24.75	1.10%	7.61%	-11.61%
Graduate	110.75	5.70%	113.50	5.84%	144.00	7.26%	166.50	8.22%	179.00	7.97%	7.51%	61.63%
Total	1,943.25		1,945.00		1,984.00		2,025.75		2,246.00		10.87%	15.58%

STUDENT PROFILE INFORMATION
FALL 2006 - 2010

ETHNICITY	2006		2007		2008		2009		2010		% Change 2009-2010	% Change 2006-2010
	N	%	N	%	N	%	N	%	N	%		
American Indian	22	1.04%	29	1.37%	26	1.19%	19	0.87%	23	0.95%	21.05%	4.55%
African American	382	18.05%	385	18.18%	379	17.31%	373	17.09%	504	20.86%	35.12%	31.94%
Asian	39	1.84%	38	1.79%	30	1.37%	26	1.19%	31	1.28%	19.23%	-20.51%
Pacific Islander*	---	--	---	--	---	--	---	--	9	0.37%	NA	NA
Hispanic	105	4.96%	109	5.15%	138	6.30%	101	4.63%	106	4.39%	4.95%	0.95%
All Ethnic Minorities	548	25.90%	561	26.49%	573	26.16%	519	23.77%	673	27.86%	29.67%	22.81%
American Caucasian	1,348	63.71%	1,296	61.19%	1,271	58.04%	1,112	50.94%	1,311	54.26%	17.90%	-2.74%
International	72	3.40%	78	3.68%	81	3.70%	91	4.17%	121	5.01%	32.97%	68.06%
Multi-Racial**	---	--	---	--	---	--	---	--	85	3.52%	NA	NA
No Report	148	6.99%	183	8.64%	265	12.10%	461	21.12%	226	9.35%	-50.98%	52.70%

*Starting in Fall 2010, Asian/Pacific Islander was divided into two ethnic categories

**Starting in Fall 2010, the ethnic categories of Multi-Racial was added for those student having multiple ethnicities.

AGE	2006		2007		2008		2009		2010		% Change 2009-2010	% Change 2006-2010
	N	%	N	%	N	%	N	%	N	%		
Less than 18	6	0.28%	3	0.14%	5	0.23%	3	0.14%	3	0.12%	0.00%	-50.00%
18	280	13.23%	273	12.89%	285	13.01%	288	13.19%	322	13.33%	11.81%	15.00%
19	299	14.13%	331	15.63%	338	15.43%	337	15.44%	411	17.01%	21.96%	37.46%
20	279	13.19%	246	11.61%	269	12.28%	269	12.32%	278	11.51%	3.35%	-0.36%
21	248	11.72%	248	11.71%	231	10.55%	250	11.45%	264	10.93%	5.60%	6.45%
18-21	1,106	52.27%	1,098	51.84%	1,123	51.28%	1,144	52.40%	1,275	52.77%	11.45%	15.28%
22	186	8.79%	214	10.10%	202	9.22%	182	8.34%	194	8.03%	6.59%	4.30%
23	110	5.20%	121	5.71%	126	5.75%	120	5.50%	115	4.76%	-4.17%	4.55%
24	76	3.59%	63	2.97%	75	3.42%	70	3.21%	88	3.64%	25.71%	15.79%
22-24	372	17.58%	398	18.79%	403	18.40%	372	17.04%	397	16.43%	6.72%	6.72%
25-30	253	11.96%	246	11.61%	263	12.01%	295	13.51%	307	12.71%	4.07%	21.34%
31-35	129	6.10%	134	6.33%	130	5.94%	106	4.86%	124	5.13%	16.98%	-3.88%
36-40	80	3.78%	78	3.68%	89	4.06%	99	4.54%	106	4.39%	7.07%	32.50%
41-50	114	5.39%	127	6.00%	136	6.21%	120	5.50%	149	6.17%	24.17%	30.70%
51-64	19	0.90%	22	1.04%	27	1.23%	35	1.60%	41	1.70%	17.14%	115.79%
65 or Older	4	0.19%	1	0.05%	3	0.14%	4	0.18%	4	0.17%	0.00%	0.00%
No Report	33	1.56%	11	0.52%	11	0.50%	5	0.23%	10	0.41%	100.00%	-69.70%

**INTERNATIONAL STUDENTS BY COUNTRY
FALL 2006 - FALL 2010**

Country	2006		2007		2008		2009		2010		% Change	% Change
	N	%	N	%	N	%	N	%	N	%	2009-2010	2006-2010
Afghanistan	1	0.05%	1	0.05%	1	0.05%	0	0.00%	2	0.08%	200.00%	100.00%
Algeria	1	0.05%	1	0.05%	0	0.00%	1	0.05%	0	0.00%	-100.00%	-100.00%
Australia	0	0.00%	0	0.00%	0	0.00%	0	0.00%	0	0.00%	0.00%	0.00%
Bahamas	7	0.33%	8	0.38%	10	0.46%	7	0.32%	4	0.17%	-42.86%	-42.86%
Bangladesh	1	0.05%	0	0.00%	0	0.00%	0	0.00%	0	0.00%	0.00%	-100.00%
Barbados	0	0.00%	0	0.00%	0	0.00%	0	0.00%	0	0.00%	0.00%	0.00%
Belarus	2	0.09%	2	0.09%	1	0.05%	1	0.05%	1	0.04%	0.00%	-50.00%
Bolivia	1	0.05%	0	0.00%	0	0.00%	0	0.00%	0	0.00%	0.00%	-100.00%
Bosnia	0	0.00%	0	0.00%	2	0.09%	6	0.27%	21	0.87%	250.00%	100.00%
Botswana	0	0.00%	0	0.00%	0	0.00%	1	0.05%	2	0.08%	100.00%	200.00%
Brazil	0	0.00%	0	0.00%	0	0.00%	1	0.05%	2	0.08%	100.00%	200.00%
Burkina Faso	0	0.00%	0	0.00%	0	0.00%	0	0.00%	0	0.00%	0.00%	0.00%
Burma	0	0.00%	0	0.00%	0	0.00%	0	0.00%	0	0.00%	0.00%	0.00%
Cambodia	0	0.00%	0	0.00%	0	0.00%	0	0.00%	1	0.04%	100.00%	100.00%
Cameroon	0	0.00%	0	0.00%	0	0.00%	0	0.00%	0	0.00%	0.00%	0.00%
Canada	1	0.05%	1	0.05%	2	0.09%	2	0.09%	1	0.04%	-50.00%	0.00%
Chile	1	0.05%	0	0.00%	0	0.00%	1	0.05%	1	0.04%	0.00%	0.00%
China	4	0.19%	3	0.14%	3	0.14%	3	0.14%	2	0.08%	-33.33%	-50.00%
Colombia	1	0.05%	2	0.09%	2	0.09%	2	0.09%	1	0.04%	-50.00%	0.00%
Costa Rica	1	0.05%	2	0.09%	5	0.23%	8	0.37%	7	0.29%	-12.50%	600.00%
Croatia	1	0.05%	1	0.05%	1	0.05%	1	0.05%	0	0.00%	-100.00%	-100.00%
Czechoslovakia	0	0.00%	0	0.00%	0	0.00%	0	0.00%	1	0.04%	100.00%	100.00%
Dominican Republic	0	0.00%	0	0.00%	0	0.00%	1	0.05%	1	0.04%	0.00%	100.00%
East Timor	0	0.00%	1	0.05%	1	0.05%	1	0.05%	1	0.04%	0.00%	100.00%
Ecuador	0	0.00%	0	0.00%	0	0.00%	0	0.00%	1	0.04%	100.00%	100.00%
El Salvador	0	0.00%	0	0.00%	0	0.00%	0	0.00%	0	0.00%	0.00%	0.00%
Ethiopia	1	0.05%	1	0.05%	0	0.00%	0	0.00%	1	0.04%	100.00%	0.00%
Gambia	0	0.00%	0	0.00%	1	0.05%	1	0.05%	1	0.04%	0.00%	100.00%
Germany	1	0.05%	1	0.05%	1	0.05%	1	0.05%	0	0.00%	-100.00%	-100.00%
Ghana	0	0.00%	0	0.00%	0	0.00%	0	0.00%	1	0.04%	100.00%	100.00%
Guatemala	0	0.00%	1	0.05%	1	0.05%	1	0.05%	1	0.04%	0.00%	100.00%
Guyana	2	0.09%	2	0.09%	2	0.09%	3	0.14%	4	0.17%	33.33%	100.00%
Honduras	1	0.05%	1	0.05%	2	0.09%	2	0.09%	2	0.08%	0.00%	100.00%
India	3	0.14%	3	0.14%	0	0.00%	1	0.05%	7	0.29%	600.00%	133.33%
Indonesia	0	0.00%	1	0.05%	1	0.05%	1	0.05%	1	0.04%	0.00%	100.00%
Ireland	0	0.00%	0	0.00%	1	0.05%	1	0.05%	1	0.04%	0.00%	100.00%
Israel	0	0.00%	0	0.00%	2	0.09%	1	0.05%	1	0.04%	0.00%	100.00%
Ivory Coast	0	0.00%	0	0.00%	0	0.00%	0	0.00%	0	0.00%	0.00%	0.00%
Jamaica	0	0.00%	1	0.05%	1	0.05%	1	0.05%	1	0.04%	0.00%	100.00%
Japan	5	0.24%	5	0.24%	2	0.09%	1	0.05%	1	0.04%	0.00%	-80.00%
Jordan	0	0.00%	0	0.00%	0	0.00%	0	0.00%	1	0.04%	100.00%	100.00%
Kazakhstan	2	0.09%	2	0.09%	2	0.09%	0	0.00%	0	0.00%	0.00%	-100.00%
Kenya	0	0.00%	0	0.00%	0	0.00%	0	0.00%	1	0.04%	100.00%	100.00%
Kosovo	0	0.00%	0	0.00%	0	0.00%	0	0.00%	1	0.04%	100.00%	100.00%

**INTERNATIONAL STUDENTS BY COUNTRY
FALL 2006 - FALL 2010**

Country	2006		2007		2008		2009		2010		% Change 2009-2010	% Change 2006-2010
	N	%	N	%	N	%	N	%	N	%		
Malawi	0	0.00%	0	0.00%	0	0.00%	0	0.00%	0	0.00%	0.00%	0.00%
Malaysia	0	0.00%	0	0.00%	0	0.00%	0	0.00%	0	0.00%	0.00%	0.00%
Mexico	0	0.00%	0	0.00%	0	0.00%	0	0.00%	0	0.00%	0.00%	0.00%
Mongolia	1	0.05%	2	0.09%	1	0.05%	1	0.05%	1	0.04%	0.00%	0.00%
Morocco	0	0.00%	0	0.00%	0	0.00%	0	0.00%	0	0.00%	0.00%	0.00%
Mozambique	0	0.00%	1	0.05%	1	0.05%	2	0.09%	2	0.08%	0.00%	200.00%
Namibia	1	0.05%	1	0.05%	1	0.05%	0	0.00%	0	0.00%	0.00%	-100.00%
Nepal	1	0.05%	3	0.14%	3	0.14%	3	0.14%	2	0.08%	-33.33%	100.00%
Nicaragua	1	0.05%	1	0.05%	1	0.05%	2	0.09%	3	0.12%	50.00%	200.00%
Nigeria	0	0.00%	0	0.00%	0	0.00%	0	0.00%	1	0.04%	100.00%	100.00%
Norway	0	0.00%	0	0.00%	1	0.05%	1	0.05%	2	0.08%	100.00%	200.00%
Pakistan	0	0.00%	0	0.00%	1	0.05%	0	0.00%	0	0.00%	0.00%	0.00%
Palestine	1	0.05%	1	0.05%	0	0.00%	1	0.05%	1	0.04%	0.00%	0.00%
Panama	0	0.00%	0	0.00%	0	0.00%	0	0.00%	0	0.00%	0.00%	0.00%
Peru	1	0.05%	2	0.09%	1	0.05%	0	0.00%	0	0.00%	0.00%	-100.00%
Poland	1	0.05%	1	0.05%	0	0.00%	0	0.00%	0	0.00%	0.00%	-100.00%
Portugal	0	0.00%	0	0.00%	0	0.00%	0	0.00%	0	0.00%	0.00%	0.00%
Russia	16	0.76%	10	0.47%	9	0.41%	7	0.32%	7	0.29%	0.00%	-56.25%
Rwanda	0	0.00%	0	0.00%	0	0.00%	0	0.00%	1	0.04%	100.00%	100.00%
Senegal	2	0.09%	2	0.09%	2	0.09%	2	0.09%	0	0.00%	-100.00%	-100.00%
Sierra Leone	0	0.00%	1	0.05%	1	0.05%	0	0.00%	0	0.00%	0.00%	0.00%
Singapore	0	0.00%	0	0.00%	0	0.00%	0	0.00%	1	0.04%	100.00%	100.00%
Slovakia	0	0.00%	0	0.00%	0	0.00%	0	0.00%	0	0.00%	0.00%	0.00%
South Africa	1	0.05%	0	0.00%	0	0.00%	0	0.00%	0	0.00%	0.00%	-100.00%
South Korea	1	0.05%	0	0.00%	0	0.00%	0	0.00%	0	0.00%	0.00%	-100.00%
Spain	0	0.00%	0	0.00%	2	0.09%	2	0.09%	2	0.08%	0.00%	200.00%
Sudan	1	0.05%	2	0.09%	2	0.09%	2	0.09%	4	0.17%	100.00%	300.00%
Swaziland	2	0.09%	1	0.05%	2	0.09%	5	0.23%	6	0.25%	20.00%	200.00%
Sweden	0	0.00%	0	0.00%	0	0.00%	0	0.00%	0	0.00%	0.00%	0.00%
Thailand	1	0.05%	2	0.09%	2	0.09%	2	0.09%	3	0.12%	50.00%	200.00%
The Gambia	1	0.05%	1	0.05%	0	0.00%	0	0.00%	1	0.04%	100.00%	0.00%
Tibet	0	0.00%	0	0.00%	0	0.00%	1	0.05%	1	0.04%	0.00%	100.00%
Trinidad and Tobago	0	0.00%	0	0.00%	0	0.00%	0	0.00%	0	0.00%	0.00%	0.00%
Uganda	0	0.00%	0	0.00%	0	0.00%	0	0.00%	1	0.04%	100.00%	100.00%
United Kingdom	0	0.00%	1	0.05%	0	0.00%	3	0.14%	1	0.04%	-66.67%	100.00%
Uzbekistan	1	0.05%	1	0.05%	2	0.09%	3	0.14%	3	0.12%	0.00%	200.00%
Vietnam	0	0.00%	2	0.09%	2	0.09%	2	0.09%	2	0.08%	0.00%	200.00%
Zambia	0	0.00%	0	0.00%	0	0.00%	0	0.00%	1	0.04%	100.00%	100.00%
Zimbabwe	1	0.05%	2	0.09%	2	0.09%	2	0.09%	2	0.08%	0.00%	100.00%
Unknown	1	0.05%	1	0.05%	0	0.00%	0	0.00%	0	0.00%	0.00%	-100.00%
Total	72	3.40%	78	3.68%	80	3.65%	91	4.16%	122	5.05%	34.07%	69.44%

STUDENTS' GEOGRAPHIC ORIGIN
FALL 2006 - 2010

	2006		2007		2008		2009		2010		% Change 2009-2010	% Change 2005-2009
	N	%	N	%	N	%	N	%	N	%		
Alabama	5	0.24%	5	0.24%	2	0.09%	2	0.09%	3	0.12%	50.00%	-40.00%
Alaska	0	0.00%	1	0.05%	1	0.05%	0	0.00%	0	0.00%	0.00%	0.00%
Arizona	0	0.00%	0	0.00%	1	0.05%	1	0.05%	1	0.04%	0.00%	100.00%
Arkansas	0	0.00%	0	0.00%	0	0.00%	0	0.00%	0	0.00%	0.00%	0.00%
California	4	0.19%	2	0.09%	5	0.23%	3	0.14%	7	0.29%	133.33%	75.00%
Colorado	2	0.09%	4	0.19%	3	0.14%	2	0.09%	4	0.17%	100.00%	100.00%
Connecticut	16	0.76%	16	0.76%	21	0.96%	18	0.82%	17	0.70%	-5.56%	6.25%
Delaware	15	0.71%	18	0.85%	14	0.64%	9	0.41%	10	0.41%	11.11%	-33.33%
District of Columbia	0	0.00%	0	0.00%	0	0.00%	0	0.00%	0	0.00%	0.00%	0.00%
Florida	88	4.16%	84	3.97%	94	4.29%	83	3.80%	86	3.56%	3.61%	-2.27%
Georgia	17	0.80%	25	1.18%	23	1.05%	23	1.05%	18	0.75%	-21.74%	5.88%
Hawaii	0	0.00%	0	0.00%	1	0.05%	0	0.00%	1	0.04%	100.00%	100.00%
Idaho	0	0.00%	1	0.05%	1	0.05%	2	0.09%	2	0.08%	0.00%	100.00%
Illinois	12	0.57%	15	0.71%	12	0.55%	14	0.64%	10	0.41%	-28.57%	-16.67%
Indiana	10	0.47%	6	0.28%	10	0.46%	3	0.14%	1	0.04%	-66.67%	-90.00%
Iowa	4	0.19%	4	0.19%	4	0.18%	3	0.14%	0	0.00%	-100.00%	-100.00%
Kansas	4	0.19%	4	0.19%	3	0.14%	1	0.05%	2	0.08%	100.00%	-50.00%
Kentucky	3	0.14%	3	0.14%	4	0.18%	5	0.23%	3	0.12%	-40.00%	0.00%
Louisiana	3	0.14%	1	0.05%	0	0.00%	0	0.00%	0	0.00%	0.00%	-100.00%
Maine	8	0.38%	7	0.33%	7	0.32%	9	0.41%	11	0.46%	22.22%	37.50%
Maryland	62	2.93%	47	2.22%	54	2.47%	46	2.11%	47	1.95%	2.17%	-24.19%
Massachusetts	40	1.89%	38	1.79%	32	1.46%	43	1.97%	45	1.86%	4.65%	12.50%
Michigan	8	0.38%	6	0.28%	10	0.46%	9	0.41%	9	0.37%	0.00%	12.50%
Minnesota	4	0.19%	6	0.28%	2	0.09%	1	0.05%	2	0.08%	100.00%	-50.00%
Mississippi	3	0.14%	2	0.09%	0	0.00%	0	0.00%	1	0.04%	0.00%	-66.67%
Missouri	2	0.09%	3	0.14%	5	0.23%	2	0.09%	2	0.08%	0.00%	0.00%
Montana	1	0.05%	0	0.00%	0	0.00%	0	0.00%	0	0.00%	0.00%	-100.00%
Nebraska	2	0.09%	1	0.05%	0	0.00%	0	0.00%	0	0.00%	0.00%	-100.00%
Nevada	1	0.05%	0	0.00%	1	0.05%	1	0.05%	2	0.08%	100.00%	100.00%
New Hampshire	24	1.13%	17	0.80%	16	0.73%	10	0.46%	11	0.46%	10.00%	-54.17%
New Jersey	44	2.08%	42	1.98%	45	2.05%	49	2.24%	51	2.11%	4.08%	15.91%
New Mexico	1	0.05%	0	0.00%	0	0.00%	0	0.00%	1	0.04%	0.00%	0.00%
New York	71	3.36%	74	3.49%	75	3.42%	74	3.39%	76	3.15%	2.70%	7.04%
North Carolina	1,373	64.89%	1,374	64.87%	1,445	65.98%	1,465	67.11%	1,635	67.67%	11.60%	19.08%
North Dakota	0	0.00%	0	0.00%	0	0.00%	0	0.00%	0	0.00%	0.00%	0.00%
Ohio	31	1.47%	31	1.46%	35	1.60%	35	1.60%	31	1.28%	-11.43%	0.00%
Oklahoma	2	0.09%	0	0.00%	1	0.05%	1	0.05%	2	0.08%	100.00%	0.00%
Oregon	1	0.05%	2	0.09%	3	0.14%	2	0.09%	2	0.08%	0.00%	100.00%
Pennsylvania	68	3.21%	73	3.45%	60	2.74%	48	2.20%	48	1.99%	0.00%	-29.41%
Rhode Island	8	0.38%	5	0.24%	6	0.27%	4	0.18%	5	0.21%	25.00%	-37.50%
South Carolina	14	0.66%	17	0.80%	20	0.91%	22	1.01%	29	1.20%	31.82%	107.14%
South Dakota	0	0.00%	0	0.00%	0	0.00%	1	0.05%	1	0.04%	0.00%	100.00%
Tennessee	1	0.05%	2	0.09%	3	0.14%	5	0.23%	4	0.17%	-20.00%	300.00%
Texas	12	0.57%	14	0.66%	11	0.50%	11	0.50%	17	0.70%	54.55%	41.67%
Utah	0	0.00%	0	0.00%	0	0.00%	0	0.00%	0	0.00%	0.00%	0.00%
Vermont	7	0.33%	7	0.33%	5	0.23%	5	0.23%	5	0.21%	0.00%	-28.57%
Virginia	56	2.65%	67	3.16%	54	2.47%	68	3.11%	83	3.44%	22.06%	48.21%
Washington	3	0.14%	2	0.09%	3	0.14%	1	0.05%	1	0.04%	0.00%	-66.67%
West Virginia	9	0.43%	7	0.33%	6	0.27%	4	0.18%	1	0.04%	-75.00%	-88.89%
Wisconsin	4	0.19%	6	0.28%	7	0.32%	6	0.27%	6	0.25%	0.00%	50.00%
Wyoming	0	0.00%	0	0.00%	1	0.05%	1	0.05%	1	0.04%	0.00%	100.00%
Territories	1	0.05%	1	0.05%	3	0.14%	0	0.00%	1	0.04%	100.00%	0.00%
International	72	3.40%	78	3.68%	81	3.70%	91	4.17%	121	5.01%	32.97%	68.06%
	2,116		2,118		2,190	16	2,183		2,416		10.67%	14.18%

NORTH CAROLINA STUDENTS BY COUNTY
FALL 2006 - FALL 2010

North Carolina County	2006		2007		2008		2009		2010		% Change 2009-2010	% Change 2006-2010
	N	%	N	%	N	%	N	%	N	%		
Alamance	11	0.52%	12	0.57%	10	0.46%	8	0.37%	14	0.58%	75%	27%
Alexander	0	0.00%	0	0.00%	0	0.00%	0	0.00%	0	0.00%	0%	0%
Alleghany	0	0.00%	0	0.00%	0	0.00%	0	0.00%	0	0.00%	0%	0%
Anson	2	0.09%	1	0.05%	0	0.00%	1	0.05%	1	0.04%	0%	-50%
Ashe	0	0.00%	0	0.00%	1	0.05%	0	0.00%	0	0.00%	0%	0%
Avery	0	0.00%	0	0.00%	2	0.09%	1	0.05%	0	0.00%	-100%	0%
Beaufort	3	0.14%	6	0.28%	2	0.09%	2	0.09%	3	0.12%	50%	0%
Bertie	0	0.00%	0	0.00%	0	0.00%	0	0.00%	1	0.04%	100%	100%
Bladen	7	0.33%	12	0.57%	8	0.37%	7	0.32%	11	0.46%	57%	57%
Brunswick	5	0.24%	4	0.19%	4	0.18%	6	0.27%	3	0.12%	-50%	-40%
Buncombe	3	0.14%	5	0.24%	4	0.18%	4	0.18%	4	0.17%	0%	33%
Burke	3	0.14%	2	0.09%	2	0.09%	1	0.05%	2	0.08%	100%	-33%
Cabarrus	8	0.38%	7	0.33%	7	0.32%	13	0.59%	14	0.58%	8%	75%
Camden	0	0.00%	1	0.05%	0	0.00%	0	0.00%	0	0.00%	0%	0%
Carteret	4	0.19%	2	0.09%	6	0.27%	6	0.27%	7	0.29%	17%	75%
Caswell	1	0.05%	1	0.05%	0	0.00%	0	0.00%	0	0.00%	0%	-100%
Catawba	2	0.09%	4	0.19%	4	0.18%	6	0.27%	8	0.33%	33%	300%
Chatham	12	0.57%	10	0.47%	6	0.27%	8	0.37%	8	0.33%	0%	-33%
Cherokee	0	0.00%	0	0.00%	0	0.00%	1	0.05%	2	0.08%	100%	200%
Chowan	0	0.00%	2	0.09%	3	0.14%	2	0.09%	1	0.04%	-50%	100%
Clay	0	0.00%	0	0.00%	0	0.00%	0	0.00%	0	0.00%	0%	0%
Cleveland	1	0.05%	1	0.05%	1	0.05%	1	0.05%	3	0.12%	200%	200%
Columbus	6	0.28%	10	0.47%	5	0.23%	8	0.37%	11	0.46%	38%	83%
Craven	6	0.28%	5	0.24%	4	0.18%	7	0.32%	7	0.29%	0%	17%
Cumberland	776	36.67%	794	37.49%	851	38.86%	829	37.85%	912	37.75%	10%	18%
Currituck	2	0.09%	2	0.09%	2	0.09%	0	0.00%	1	0.04%	100%	-50%
Dare	5	0.24%	7	0.33%	4	0.18%	3	0.14%	1	0.04%	-67%	-80%
Davidson	6	0.28%	4	0.19%	3	0.14%	4	0.18%	5	0.21%	25%	-17%
Davie	1	0.05%	0	0.00%	0	0.00%	0	0.00%	0	0.00%	0%	-100%
Duplin	7	0.33%	8	0.38%	7	0.32%	10	0.46%	12	0.50%	20%	71%
Durham	9	0.43%	8	0.38%	12	0.55%	7	0.32%	10	0.41%	43%	11%
Edgecombe	3	0.14%	2	0.09%	3	0.14%	2	0.09%	3	0.12%	50%	0%
Forsyth	9	0.43%	9	0.42%	13	0.59%	10	0.46%	20	0.83%	100%	122%
Franklin	1	0.05%	1	0.05%	1	0.05%	0	0.00%	1	0.04%	100%	0%
Gaston	4	0.19%	3	0.14%	9	0.41%	9	0.41%	10	0.41%	11%	150%
Gates	3	0.14%	0	0.00%	1	0.05%	1	0.05%	0	0.00%	-100%	-100%
Graham	0	0.00%	0	0.00%	0	0.00%	0	0.00%	0	0.00%	0%	0%
Granville	2	0.09%	4	0.19%	6	0.27%	4	0.18%	3	0.12%	-25%	50%
Greene	0	0.00%	1	0.05%	1	0.05%	0	0.00%	0	0.00%	0%	0%
Guilford	15	0.71%	9	0.42%	16	0.73%	21	0.96%	20	0.83%	-5%	33%
Halifax	0	0.00%	1	0.05%	1	0.05%	2	0.09%	6	0.25%	200%	100%
Harnett	35	1.65%	46	2.17%	62	2.83%	72	3.29%	64	2.65%	-11%	83%
Haywood	1	0.05%	1	0.05%	1	0.05%	0	0.00%	0	0.00%	0%	-100%
Henderson	1	0.05%	0	0.00%	0	0.00%	0	0.00%	0	0.00%	0%	-100%
Hertford	1	0.05%	1	0.05%	2	0.09%	1	0.05%	0	0.00%	-100%	-100%
Hoke	34	1.61%	43	2.03%	42	1.92%	41	1.87%	50	2.07%	22%	47%
Hyde	1	0.05%	0	0.00%	1	0.05%	0	0.00%	0	0.00%	0%	-100%
Iredell	3	0.14%	3	0.14%	2	0.09%	8	0.37%	5	0.21%	-38%	67%
Johnston	8	0.38%	12	0.57%	14	0.64%	21	0.96%	25	1.03%	19%	213%
Jones	0	0.00%	0	0.00%	0	0.00%	2	0.09%	0	0.00%	-100%	0%
Lee	24	1.13%	23	1.09%	24	1.10%	27	1.23%	31	1.28%	15%	29%
Lenoir	0	0.00%	1	0.05%	3	0.14%	4	0.18%	3	0.12%	-25%	100%

**NORTH CAROLINA STUDENTS BY COUNTY
FALL 2006 - FALL 2010**

North Carolina County	2006		2007		2008		2009		2010		% Change 2009-2010	% Change 2006-2010
	N	%	N	%	N	%	N	%	N	%		
Lincoln	3	0.14%	3	0.14%	1	0.05%	5	0.23%	4	0.17%	-20%	33%
Macon	0	0.00%	0	0.00%	0	0.00%	0	0.00%	0	0.00%	0%	0%
Madison	0	0.00%	0	0.00%	0	0.00%	0	0.00%	0	0.00%	0%	0%
Martin	0	0.00%	0	0.00%	1	0.05%	0	0.00%	2	0.08%	200%	200%
McDowell	0	0.00%	0	0.00%	0	0.00%	1	0.05%	1	0.04%	0%	100%
Mecklenburg	16	0.76%	15	0.71%	10	0.46%	13	0.59%	15	0.62%	15%	-6%
Mitchell	0	0.00%	0	0.00%	0	0.00%	0	0.00%	0	0.00%	0%	0%
Montgomery	3	0.14%	7	0.33%	7	0.32%	5	0.23%	4	0.17%	-20%	33%
Moore	29	1.37%	22	1.04%	23	1.05%	31	1.42%	28	1.16%	-10%	-3%
Nash	7	0.33%	2	0.09%	3	0.14%	5	0.23%	7	0.29%	40%	0%
New Hanover	16	0.76%	9	0.42%	9	0.41%	11	0.50%	15	0.62%	36%	-6%
Northampton	0	0.00%	0	0.00%	1	0.05%	2	0.09%	1	0.04%	-50%	100%
Onslow	14	0.66%	13	0.61%	6	0.27%	14	0.64%	20	0.83%	43%	43%
Orange	9	0.43%	11	0.52%	11	0.50%	9	0.41%	9	0.37%	0%	0%
Pamlico	2	0.09%	3	0.14%	2	0.09%	2	0.09%	2	0.08%	0%	0%
Pasquotank	0	0.00%	1	0.05%	1	0.05%	2	0.09%	2	0.08%	0%	200%
Pender	5	0.24%	6	0.28%	9	0.41%	6	0.27%	9	0.37%	50%	80%
Perquimans	1	0.05%	0	0.00%	0	0.00%	0	0.00%	0	0.00%	0%	-100%
Person	3	0.14%	2	0.09%	1	0.05%	2	0.09%	2	0.08%	0%	-33%
Pitt	5	0.24%	5	0.24%	7	0.32%	8	0.37%	12	0.50%	50%	140%
Polk	2	0.09%	2	0.09%	1	0.05%	0	0.00%	0	0.00%	0%	-100%
Randolph	7	0.33%	9	0.42%	8	0.37%	3	0.14%	14	0.58%	367%	100%
Richmond	7	0.33%	6	0.28%	7	0.32%	5	0.23%	7	0.29%	40%	0%
Robeson	26	1.23%	30	1.42%	31	1.42%	27	1.23%	33	1.37%	22%	27%
Rockingham	5	0.24%	4	0.19%	5	0.23%	4	0.18%	4	0.17%	0%	-20%
Rowan	5	0.24%	8	0.38%	5	0.23%	2	0.09%	1	0.04%	-50%	-80%
Rutherford	2	0.09%	1	0.05%	2	0.09%	5	0.23%	4	0.17%	-20%	100%
Sampson	23	1.09%	32	1.51%	39	1.78%	40	1.83%	38	1.57%	-5%	65%
Scotland	2	0.09%	2	0.09%	6	0.27%	4	0.18%	4	0.17%	0%	100%
Stanly	4	0.19%	4	0.19%	3	0.14%	3	0.14%	5	0.21%	67%	25%
Stokes	4	0.19%	5	0.24%	8	0.37%	4	0.18%	1	0.04%	-75%	-75%
Surry	1	0.05%	0	0.00%	0	0.00%	0	0.00%	2	0.08%	200%	100%
Transylvania	1	0.05%	1	0.05%	0	0.00%	0	0.00%	0	0.00%	0%	-100%
Union	6	0.28%	8	0.38%	11	0.50%	13	0.59%	9	0.37%	-31%	50%
Vance	1	0.05%	3	0.14%	2	0.09%	1	0.05%	1	0.04%	0%	0%
Wake	57	2.69%	75	3.54%	60	2.74%	54	2.47%	65	2.69%	20%	14%
Warren	1	0.05%	1	0.05%	1	0.05%	1	0.05%	2	0.08%	100%	100%
Washington	0	0.00%	0	0.00%	0	0.00%	0	0.00%	1	0.04%	100%	100%
Watauga	1	0.05%	1	0.05%	2	0.09%	2	0.09%	2	0.08%	0%	100%
Wayne	8	0.38%	7	0.33%	5	0.23%	12	0.55%	12	0.50%	0%	50%
Wilkes	0	0.00%	1	0.05%	2	0.09%	3	0.14%	2	0.08%	-33%	200%
Wilson	1	0.05%	2	0.09%	4	0.18%	4	0.18%	10	0.41%	150%	900%
Yadkin	0	0.00%	0	0.00%	1	0.05%	2	0.09%	3	0.12%	50%	300%
Not Reported	0	0.00%	0	0.00%	0	0.00%	0	0.00%	0	0.00%	0%	0%
Total	1,302	61.53%	1,369	64.64%	1,445	65.98%	1,465	66.89%	1,635	67.67%	12%	26%

**STUDENT HOUSING
FALL 2006 - FALL 2010**

	2006		2007		2008		2009		2010		% Change 2009-2010	% Change 2006-2010
	N	%	N	%	N	%	N	%	N	%		
On-Campus Housing	887	41.92%	901	42.54%	905	41.32%	949	43.33%	1,074	44.45%	13.17%	21.08%
<i>On-Campus</i>	<i>887</i>	<i>41.92%</i>	<i>901</i>	<i>42.54%</i>	<i>905</i>	<i>42.73%</i>	<i>949</i>	<i>44.81%</i>	<i>993</i>	<i>41.10%</i>	<i>4.64%</i>	<i>11.95%</i>
Cape Fear Commons	136	6.43%	134	6.33%	134	6.12%	139	6.35%	135	5.59%	-2.88%	-0.74%
Cumberland	139	6.57%	143	6.75%	141	6.44%	153	6.99%	165	6.83%	7.84%	18.71%
Garber	128	6.05%	139	6.56%	135	6.16%	135	6.16%	143	5.92%	5.93%	11.72%
Greek House	--	---	--	---	--	---	--	---	21	0.87%		
McLean Building J	90	4.25%	89	4.20%	88	4.02%	90	4.11%	46	1.90%	-48.89%	-48.89%
McLean Building K	--	---	--	---	--	---	--	---	44	1.82%	NA	NA
Pearce	44	2.08%	47	2.22%	47	2.15%	52	2.37%	51	2.11%	-1.92%	15.91%
Pines Apartments	38	1.80%	32	1.51%	36	1.64%	37	1.69%	28	1.16%	-24.32%	-26.32%
Sanford	132	6.24%	149	7.03%	146	6.67%	157	7.17%	166	6.87%	5.73%	25.76%
Weaver	128	6.05%	118	5.57%	127	5.80%	132	6.03%	140	5.79%	6.06%	9.38%
West	52	2.46%	50	2.36%	51	2.33%	54	2.47%	54	2.24%	0.00%	3.85%
<i>Off-Campus</i>	--	---	--	---	--	---	--	---	81	3.35%	<i>NA</i>	<i>NA</i>
Carver Falls	--	---	--	---	--	---	--	---	58	2.40%	NA	NA
Cobblestone	--	---	--	---	--	---	--	---	23	0.95%	NA	NA
Off-Campus Housing	1,229	58.08%	1,217	57.46%	1,285	58.68%	1,234	56.35%	1,342	55.55%	8.75%	9.19%
Overall	2,116		2,118		2,190		2,183		2,416		10.67%	14.18%

**STUDENT HOUSING
SPRING 2007 - SPRING 2011**

	2007		2008		2009		2010		2011		% Change 2010-2011	% Change 2007-2011
	N	%	N	%	N	%	N	%	N	%		
On-Campus Housing	715	39.77%	787	43.17%	790	42.07%	844	41.52%	963	44.07%	14.10%	34.69%
<i>On-Campus</i>	<i>715</i>	<i>39.77%</i>	<i>787</i>	<i>43.17%</i>	<i>790</i>	<i>42.07%</i>	<i>844</i>	<i>41.52%</i>	<i>891</i>	<i>40.78%</i>	<i>5.57%</i>	<i>24.62%</i>
Cape Fear Commons	215	11.96%	137	7.52%	130	6.92%	137	6.74%	137	6.27%	0.00%	-36.28%
Cumberland	110	6.12%	112	6.14%	119	6.34%	122	6.00%	138	6.32%	13.11%	25.45%
Garber	104	5.78%	116	6.36%	124	6.60%	120	5.90%	130	5.95%	8.33%	25.00%
Greek House	--	---	--	---	--	---	--	---	20	0.92%	NA	NA
McLean Building J	--	---	80	4.39%	75	3.99%	90	4.43%	45	2.06%	20.00%	NA
McLean Building K	--	---	--	---	--	---	--	---	43	1.97%	NA	NA
Pearce	33	1.84%	45	2.47%	37	1.97%	47	2.31%	47	2.15%	0.00%	42.42%
Pines Apartments	38	2.11%	31	1.70%	33	1.76%	33	1.62%	C*	NA	NA	NA
Sanford	99	5.51%	118	6.47%	113	6.02%	127	6.25%	136	6.22%	7.09%	37.37%
Weaver	116	6.45%	104	5.70%	113	6.02%	122	6.00%	140	6.41%	14.75%	20.69%
West	48	2.67%	44	2.41%	46	2.45%	46	2.26%	55	2.52%	19.57%	14.58%
<i>Off-Campus</i>	--	---	--	---	--	---	--	---	72	3.30%	<i>NA</i>	<i>NA</i>
Carver Falls	--	---	--	---	--	---	--	---	52	2.38%	NA	NA
Cobblestone	--	---	--	---	--	---	--	---	20	0.92%	NA	NA
Off-Campus Housing	1,083	60.23%	1,036	56.83%	1,088	57.93%	1,189	58.48%	1,222	55.93%	2.78%	12.83%
Overall	1,798		1,823		1,878		2,033		2,185		7.48%	21.52%

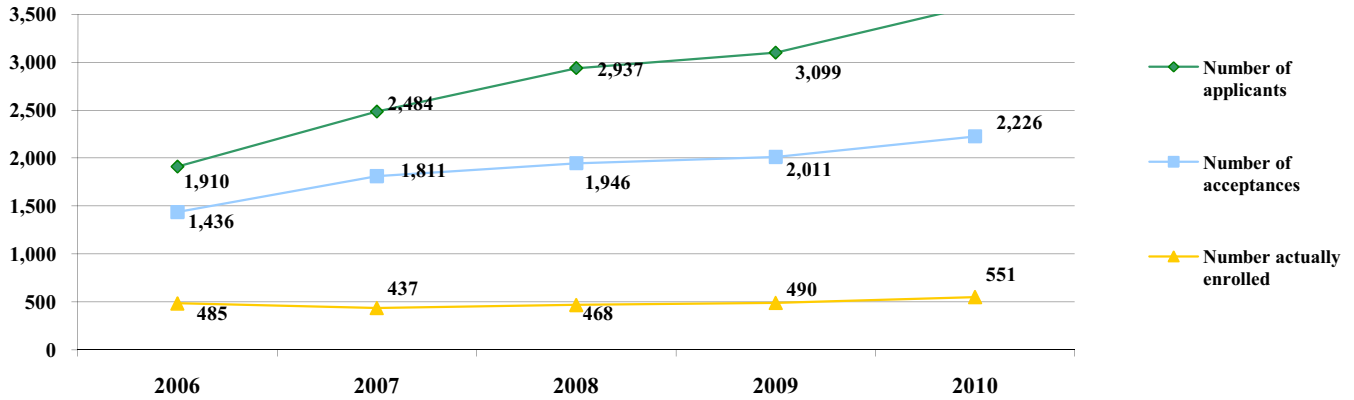
C* -- Closed after at the end of the Fall 2010 semester

FIRST-TIME STUDENTS



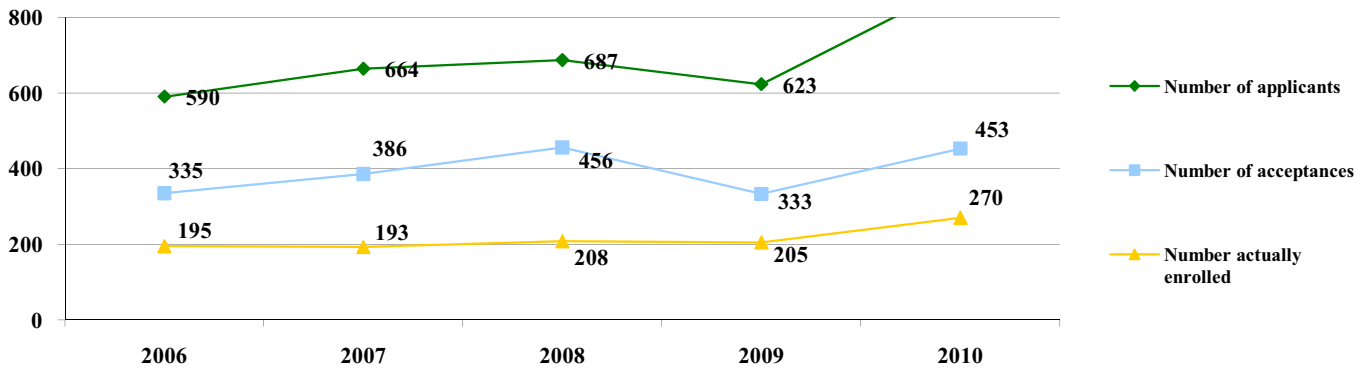
FIRST-TIME STUDENT TRENDS FALL 2005 - 2010

FIRST-TIME FRESHMEN



	2005	2006	2007	2008	2009	2010	% Change 2009-2010	%Change 2005-2010
First-Time Freshmen								
Number of applicants	1,897	1,910	2,484	2,937	3,099	3,591	16.75%	89.30%
Number of acceptances	1,482	1,436	1,811	1,946	2,011	2,226	11.05%	50.20%
Number actually enrolled	439	485	437	468	490	551	13.03%	25.51%

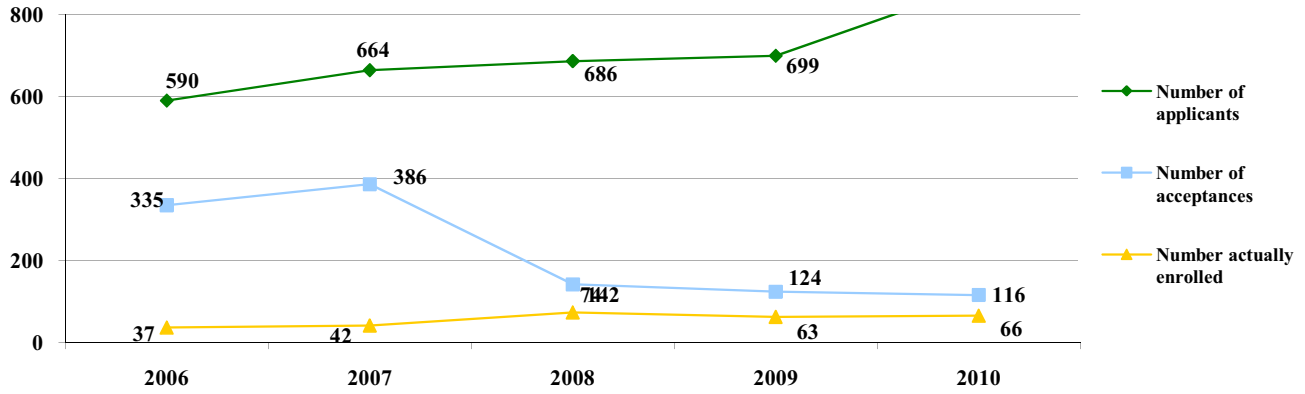
FIRST-TIME TRANSFERS



	2005	2006	2007	2008	2009	2010	% Change 2009-2010	%Change 2005-2010
First-Time Transfers								
Number of applicants	547	590	664	687	623	889	38.72%	62.52%
Number of acceptances	325	335	386	456	333	453	26.32%	39.38%
Number actually enrolled	208	195	193	208	205	270	31.25%	29.81%

**FIRST-TIME STUDENT TRENDS
FALL 2005 - 2010**

FIRST-TIME GRADUATE STUDENTS



	2005	2006	2007	2008	2009	2010	% Change 2009-2010	%Change 2005-2010
First-Time Graduate Students								
Number of applicants	547	590	664	686	699	872	25.22%	59.41%
Number of acceptances	325	335	386	142	124	116	-5.63%	-64.31%
Number actually enrolled	33	37	42	74	63	66	4.05%	100.00%

FIRST-TIME FRESHMEN PROFILE FALL 2010

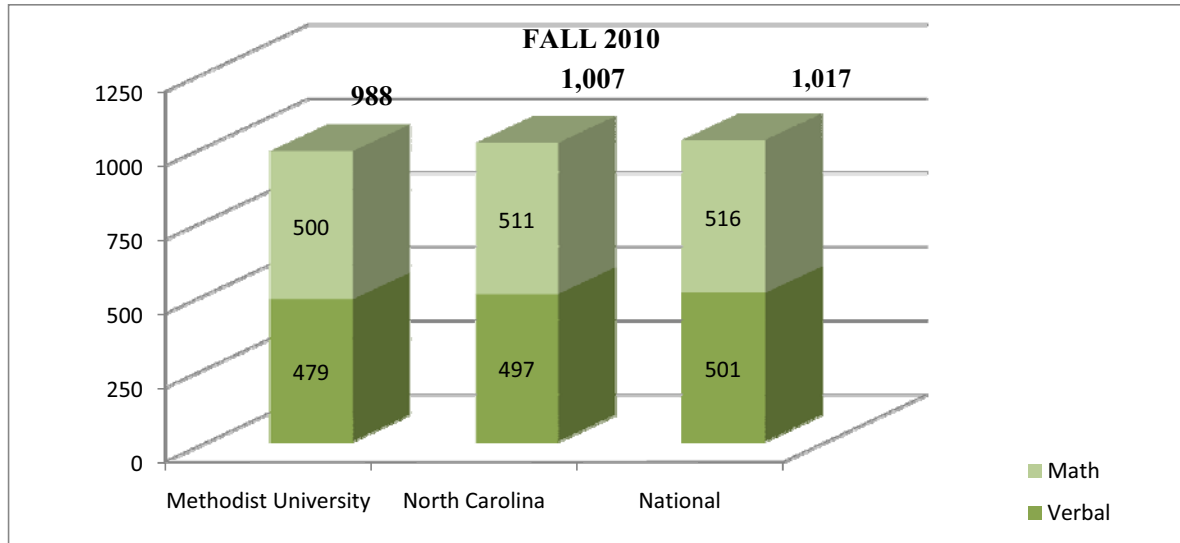
SAT Score Ranges	SAT Verbal		SAT Math		SAT Writing	
	N	%	N	%	N	%
200-249	0	0.00%	0	0.00%	0	0.00%
250-299	0	0.00%	1	0.22%	1	0.18%
300-349	4	0.73%	3	0.67%	15	2.72%
350-399	36	6.53%	27	6.04%	67	12.16%
400-449	109	19.78%	64	14.32%	94	17.06%
450-499	102	18.51%	99	22.15%	99	17.97%
500-549	73	13.25%	96	21.48%	64	11.62%
550-599	48	8.71%	66	14.77%	30	5.44%
600-649	17	3.09%	27	6.04%	6	1.09%
650-699	6	1.09%	14	3.13%	0	0.00%
700-749	3	0.54%	0	0.00%	2	0.36%
750-800	0	0.00%	1	0.22%	0	0.00%
Not Available	153	27.77%	49	10.96%	173	31.40%
Total	551	100.00%	447	100.00%	551	100.00%

	SAT Verbal	SAT MATH	SAT Writing
Average Score	479	500	454
Top Quartile Score (25%)	530	550	500
Median Score (50%)	465	500	450
Bottom Quartile Score (75%)	430	450	400

HIGH SCHOOL CLASS RANK

	N	%
Top Fifth	204	37.02%
Second Fifth	132	23.96%
Third Fifth	104	18.87%
Fourth Fifth	46	8.35%
Bottom Fifth	16	2.90%
Not Available	49	8.89%
Total	551	100.00%

**COMPARISON OF SAT SCORES OF FIRST-TIME FRESHMEN
FALL 2005-2010**



	Methodist University				State				National			
	Verbal	Math	Combined	Writing	Verbal	Math	Combined	Writing	Verbal	Math	Combined	Writing
2003	486	503	989		495	506	1,001		507	519	1,026	
2004	482	508	990		499	507	1,006		508	518	1,026	
2005	490	512	1,002		499	511	1,010		508	520	1,028	
2006	481	514	995	472	495	513	1,008	485	503	518	1,021	497
2007	482	509	991	479	495	509	1,004	482	502	515	1,017	494
2008	485	503	988	458	496	511	1,007	482	502	515	1,017	494
2009	480	511	991	460	495	511	1,006	480	501	515	1,016	493
2010	479	500	979	454	497	511	1008	477	501	516	1017	492

**FIRST-TIME TRANSFERS BY TRANSFER INSTITUTION
FALL 2006 - 2010**

Transfer Institutions	2006	2007	2008	2009	2010	% Change 2009-2010	% Change 2006-2010
Public Senior Institutions							
Appalachian State University	1	2	0	0	2	200.00%	100.00%
East Carolina University	0	3	1	2	2	0.00%	200.00%
Elizabeth City State University	0	0	0	1	2	100.00%	200.00%
Fayetteville State University	11	9	4	8	9	12.50%	-18.18%
North Carolina Agricultural & Tech. State Univ.	0	1	2	0	1	100.00%	100.00%
North Carolina Central University	0	0	0	1	1	0.00%	100.00%
North Carolina School of the Arts	0	0	0	0	0	0.00%	0.00%
North Carolina State University	2	3	1	2	4	100.00%	100.00%
University North Carolina-Asheville	0	0	0	0	0	0.00%	0.00%
University North Carolina-Chapel Hill	0	1	1	0	0	0.00%	0.00%
University North Carolina-Charlotte	0	0	1	1	0	-100.00%	0.00%
University North Carolina-Greensboro	0	1	0	2	1	-50.00%	0.00%
University North Carolina-Pembroke	2	5	3	3	1	-66.67%	-50.00%
University North Carolina-Wilmington	3	2	0	2	1	-50.00%	-66.67%
Western Carolina University	1	2	0	2	0	-100.00%	-100.00%
Winston Salem State University	0	0	0	1	1	0.00%	100.00%
Total	20	29	13	25	25	0.00%	25.00%
Community Colleges							
Alamance Community College	0	0	0	0	0	0.00%	0.00%
Asheville-Buncombe Community College	0	0	0	0	0	0.00%	0.00%
Beaufort Community College	0	0	0	0	0	0.00%	0.00%
Bladen Community College	1	2	0	1	3	200.00%	200.00%
Brunswick Community College	0	0	0	0	1	100.00%	100.00%
Caldwell	0	0	1	0	0	0.00%	0.00%
Cape Fear Community College	3	3	0	0	1	100.00%	-66.67%
Carteret Community College	0	0	0	0	0	0.00%	0.00%
Central Carolina Community College	4	0	5	2	2	0.00%	-50.00%
Central Piedmont Community College	1	0	1	0	2	200.00%	100.00%
Cleveland	0	0	1	0	0	0.00%	0.00%
Coastal Carolina Community College	1	1	3	1	2	100.00%	100.00%
College of Albemarle	0	0	0	1	0	-100.00%	0.00%
Craven Community College	0	0	0	0	2	200.00%	200.00%
Davidson Community College	0	0	0	0	0	0.00%	0.00%
Durham Technical Community College	0	0	0	0	0	0.00%	0.00%
Edgecombe Community College	0	0	0	0	0	0.00%	0.00%
Fayetteville Technical Community College	42	39	39	37	39	5.41%	-7.14%
Forsyth Technical Community College	1	2	0	0	1	100.00%	0.00%
Gaston	0	0	1	0	0	0.00%	0.00%
Guilford Community College	0	1	0	0	1	100.00%	100.00%

FIRST-TIME TRANSFERS BY TRANSFER INSTITUTION
FALL 2006 - 2010

Transfer Institutions	2006	2007	2008	2009	2010	% Change 2009-2010	% Change 2006-2010
Community Colleges (Continued)							
Isothermal Community College	0	0	0	0	1	100.00%	100.00%
James Sprunt Community College	0	0	0	0	1	0.00%	100.00%
Johnston Community College	3	1	0	2	1	-50.00%	-66.67%
Lenoir Community College	0	0	1	1	0	-100.00%	0.00%
Martin Community College	0	0	0	0	0	0.00%	0.00%
McDowell Community College	0	0	0	0	1	100.00%	100.00%
Mitchell Community College	0	0	0	0	0	0.00%	0.00%
Montgomery	1	1	0	0	0	0.00%	-100.00%
Pitt Community College	1	1	0	0	0	0.00%	-100.00%
Randolph	0	1	1	0	0	0.00%	0.00%
Richmond Community College	0	0	0	0	1	100.00%	100.00%
Robeson Community College	1	0	2	1	0	-50.00%	-100.00%
Rockingham	0	1	0	0	0	0.00%	0.00%
Rowan-Cabarrus	0	1	1	0	1	100.00%	100.00%
Sampson Community College	1	2	2	1	1	0.00%	0.00%
Sandhills Community College	2	0	2	2	4	100.00%	200.00%
Southeastern Community College	1	0	0	1	1	0.00%	0.00%
Southwestern Community College	0	0	1	0	0	-100.00%	0.00%
Stanly Community College	0	0	1	0	0	-100.00%	0.00%
Surry Community College	0	0	1	0	1	100.00%	100.00%
Vance-Granville Community College	0	0	0	0	0	0.00%	0.00%
Wake Technical Community College	0	3	0	0	2	200.00%	200.00%
Wayne Community College	0	0	0	1	0	-100.00%	0.00%
Western Piedmont Community College	0	0	0	0	0	0.00%	0.00%
Wilkes Community College	0	1	0	0	0	0.00%	0.00%
Wilson Community College	0	0	1	0	0	0.00%	0.00%
Total	63	60	64	51	69	35.29%	9.52%
Private Senior Institutions							
Barber-Scotia College	0	0	0	0	0	0.00%	0.00%
Barton College	0	1	0	0	0	0.00%	0.00%
Brevard College	0	0	0	0	0	0.00%	0.00%
Campbell University	2	4	4	5	5	0.00%	150.00%
Catawba College	0	0	0	0	0	0.00%	0.00%
Chowan College	1	0	0	0	0	0.00%	-100.00%
Davidson College	0	0	0	0	0	0.00%	0.00%
Duke University	1	0	0	0	0	0.00%	-100.00%
Elon College	0	0	0	0	1	100.00%	100.00%
Garden-Webb University	0	1	0	0	1	100.00%	100.00%

FIRST-TIME TRANSFERS BY TRANSFER INSTITUTION
FALL 2006 - 2010

Transfer Institutions	2006	2007	2008	2009	2010	% Change 2009-2010	% Change 2006-2010
Private Senior Institutions (Continued)							
Greensboro College	0	0	0	0	1	100.00%	100.00%
Guilford college	0	0	1	1	1	100.00%	100.00%
High Point University	0	1	0	1	0	100.00%	0.00%
Johnson and Wales	0	0	0	1	3	100.00%	300.00%
Lees-McRae College	0	0	1	0	0	0.00%	-100.00%
Lenoir-Rhyne College	1	0	1	0	0	0.00%	-100.00%
Livingstone College	0	0	0	1	1	100.00%	100.00%
Mars Hill College	0	0	0	0	0	0.00%	0.00%
Meredith College	1	0	0	1	1	100.00%	0.00%
Mount Olive College	1	1	0	1	0	-100.00%	-100.00%
North Carolina Wesleyan College	1	0	0	0	2	200.00%	100.00%
Peace College	0	0	0	0	0	0.00%	0.00%
Pfeiffer	0	0	1	0	0	0.00%	0.00%
Queens College	0	0	0	0	0	0.00%	0.00%
Saint Andrews College	0	2	0	0	2	200.00%	200.00%
Saint Augustine's College	0	0	0	0	1	100.00%	100.00%
Salem	1	0	0	0	0	0.00%	-100.00%
Shaw University	1	2	0	0	2	200.00%	-100.00%
Warren Wilson	0	0	1	0	0	0.00%	0.00%
Wingate University	0	1	0	0	0	0.00%	0.00%
Other Private Senior	0	0	0	0	3	300.00%	NA
Total	10	13	9	11	21	90.91%	110.00%
Private Junior Colleges							
Louisburg College	3	4	1	4	2	-50.00%	-33.33%
Saint Mary's College	1	0	0	0	0	0.00%	-100.00%
Total	4	4	1	4	2	-50.00%	-50.00%
North Carolina Institutions Total	97	106	87	91	117	28.57%	20.62%
Out-of-State Institutions							
Two-Year Institutions	55	42	65	57	57	0.00%	3.64%
Senior Institutions	42	41	52	52	89	71.15%	111.90%
Total	97	83	119	109	146	33.94%	50.52%
International Institutions							
Two-Year Institutions	1	2	0	0	0	0.00%	0.00%
Senior Institutions	1	2	4	5	4	-20.00%	300.00%
Total	2	4	4	5	4	-20.00%	100.00%
Total First-Time Transfers	196	193	210	205	267	30.24%	36.22%

**MIGRATION OF FIRST-TIME FRESHMEN TRANSFERRING
FROM METHODIST UNIVERSITY
FALL 2005 - FALL 2009**

INSTITUTIONS	FALL 2005	FALL 2006	FALL 2007	FALL 2008	FALL 2009	% Change 2008-2009	% Change 2005-2009
North Carolina Institutions Total	81	75	23	23	27	17.39%	-66.67%
Public Senior Institutions							
Appalachian State University	2	1	0	0	2	200.00%	0.00%
East Carolina University	3	1	1	0	1	100.00%	-100.00%
Elizabeth City State University	1	0	1	2	0	-100.00%	-100.00%
Fayetteville State University	11	4	0	0	0	0.00%	-100.00%
North Carolina A&T State University	2	1	0	1	0	-100.00%	-200.00%
North Carolina Central University	0	0	2	0	0	0.00%	0.00%
North Carolina School Of The Arts	1	0	0	0	0	0.00%	-100.00%
North Carolina State University	2	2	0	0	1	100.00%	-100.00%
University Of North Carolina - Charlotte	1	1	0	0	0	0.00%	-100.00%
University Of North Carolina, Asheville	1	2	0	0	0	0.00%	-100.00%
University Of North Carolina-Chapel Hill	0	0	0	0	0	0.00%	0.00%
University Of North Carolina-Greensboro	4	3	0	0	0	0.00%	-100.00%
University Of North Carolina-Pembroke	3	1	0	0	0	0.00%	-100.00%
University Of North Carolina-Wilmington	4	1	0	0	0	0.00%	-100.00%
Western Carolina University	0	0	0	0	0	0.00%	0.00%
Winston Salem State University	3	0	1	1	0	-100.00%	-100.00%
Total	38	17	5	4	4	0.00%	-89.47%
Community Colleges							
Alamance Community College	1	0	0	0	1	100.00%	0.00%
Asheville Buncombe Technical Community College	0	0	0	0	0	0.00%	0.00%
Beaufort Community College	0	0	1	0	0	0.00%	0.00%
Bladen Community College	0	0	0	0	0	0.00%	0.00%
Blue Ridge Community College	0	0	0	0	0	0.00%	0.00%
Brunswick Community College	1	0	0	0	1	100.00%	0.00%
Caldwell Community College And Technical Institute	0	0	0	0	0	0.00%	0.00%
Cape Fear Community College	3	4	0	1	0	-100.00%	-100.00%
Carteret Community College	1	0	0	0	1	100.00%	0.00%
Catawba Valley Community College	1	0	0	0	1	100.00%	0.00%
Central Carolina Community College	3	2	0	0	1	100.00%	-100.00%
Central Piedmont Community College	4	4	0	0	2	100.00%	-100.00%
Coastal Carolina Community College	0	2	0	0	0	0.00%	0.00%
College Of The Albemarle	0	2	1	0	0	0.00%	0.00%
Craven Community College	1	2	0	0	0	0.00%	-100.00%
Davidson County Community College	0	0	0	1	0	-100.00%	0.00%
Durham Technical Comm. Coll.	1	0	0	0	1	100.00%	0.00%
Ecpi College Of Technology At Charlotte	0	0	0	0	0	0.00%	0.00%
Edgecombe Community College	0	0	0	1	0	-100.00%	0.00%
Fayetteville Technical Community College	7	10	5	1	5	400.00%	-28.57%
Forsyth Technical Community College	1	1	0	2	0	-200.00%	-100.00%
Gaston College	0	1	0	0	1	100.00%	100.00%
Guilford Technical Community	2	2	1	1	1	0.00%	-50.00%
Haywood Community College	0	0	0	0	0	0.00%	0.00%
Isothermal Community College	0	1	0	0	0	0.00%	0.00%
James Sprunt Community College	1	1	1	1	1	0.00%	0.00%
Johnston Community College	0	0	0	1	0	-100.00%	0.00%

**MIGRATION OF FIRST-TIME FRESHMEN TRANSFERRING
FROM METHODIST UNIVERSITY
FALL 2005 - FALL 2009**

INSTITUTIONS	FALL	FALL	FALL	FALL	FALL	% Change	% Change
	2005	2006	2007	2008	2009	2008-2009	2005-2009
Community Colleges (Continue)							
Lenoir Community College	1	0	0	0	0	0.00%	-100.00%
Louisburg College *	0	0	0	0	0	0.00%	0.00%
Mitchell Community College	0	0	0	0	1	100.00%	100.00%
Montgomery Community College	1	0	0	0	0	0.00%	-100.00%
Nash Community College	0	0	0	0	0	0.00%	0.00%
Piedmont Community College	0	2	0	0	0	0.00%	0.00%
Pitt Community College	1	3	0	0	0	0.00%	-100.00%
Randolph Community College	0	1	0	0	0	0.00%	0.00%
Robeson Community College	1	2	1	1	0	-100.00%	100.00%
Rockingham Community College	0	0	1	0	0	0.00%	0.00%
Rowan-Cabarrus Community College	0	2	1	0	2	200.00%	200.00%
Sampson Community College	1	0	0	1	0	-100.00%	-100.00%
Sandhills Community College	1	2	0	1	3	200.00%	200.00%
South Piedmont Community College	1	0	0	0	0	0.00%	-100.00%
Southeastern Community College	1	0	2	1	0	-100.00%	-100.00%
Southwestern Community College	0	0	0	0	0	0.00%	0.00%
Stanly Community College	3	1	1	0	0	0.00%	0.00%
Surry Community College	1	0	0	1	0	100.00%	-100.00%
Vance-Granville Community College	0	0	0	0	0	0.00%	0.00%
Wake Technical Community College	2	2	2	2	1	-100.00%	-100.00%
Wayne Community College	0	1	0	0	0	0.00%	0.00%
Western Piedmont Community College	0	0	0	0	0	0.00%	0.00%
Wilkes Community College	0	1	0	0	0	0.00%	0.00%
Wilson Community College	0	0	0	0	0	0.00%	0.00%
Total	41	49	17	16	23	43.75%	-43.90%
Private Senior Institutions							
Campbell University	1	4	0	2	0	0.00%	-100.00%
Catawba College	0	2	0	0	0	0.00%	0.00%
Elon University	0	1	0	0	0	0.00%	0.00%
Gardner-Webb University	0	0	0	0	0	0.00%	0.00%
Greensboro College	0	0	0	0	0	0.00%	0.00%
Guilford College	0	0	0	0	0	0.00%	0.00%
Meredith College	0	1	0	0	0	0.00%	0.00%
Mount Olive College	0	0	0	0	0	0.00%	0.00%
North Carolina Wesleyan College	0	0	1	0	0	0.00%	0.00%
Pfeiffer College-Traditional	0	1	0	0	0	0.00%	0.00%
Queens University Of Charlotte	0	0	0	0	0	0.00%	0.00%
Shaw University	1	0	0	0	0	0.00%	-100.00%
Wingate University	0	0	0	1	0	-100.00%	0.00%
Total	2	9	1	3	0	-100.00%	-100.00%

* Private Junior Institution

**MIGRATION OF FIRST-TIME FRESHMEN TRANSFERRING
FROM METHODIST UNIVERSITY
FALL 2005 - FALL 2009**

INSTITUTIONS	FALL 2005	FALL 2006	FALL 2007	FALL 2008	FALL 2009	% Change 2008-2009	% Change 2005-2009
Out-of-State Institutions Total	73	78	34	46	37	-19.57%	-49.32%
Two-Year Institutions							
Alabama	0	0	0	0	0	0.00%	0.00%
Arkansas	0	0	0	0	0	0.00%	0.00%
Arizona	0	0	0	1	1	0.00%	100.00%
California	0	0	0	0	0	0.00%	0.00%
Colorado	0	0	0	0	0	0.00%	0.00%
Connecticut	0	0	0	0	0	0.00%	0.00%
Florida	12	18	5	10	3	-70.00%	-75.00%
Georgia	3	0	0	0	0	0.00%	0.00%
Idaho	0	0	0	0	0	0.00%	0.00%
Illinois	1	1	1	0	0	0.00%	0.00%
Iowa	0	0	0	0	0	0.00%	0.00%
Kansas	0	0	0	0	0	0.00%	0.00%
Kentucky	0	0	0	0	0	0.00%	0.00%
Maine	1	0	0	0	0	0.00%	0.00%
Maryland	2	4	1	3	0	-300.00%	0.00%
Massachusetts	2	0	0	0	0	0.00%	0.00%
Minnesota	1	0	0	0	0	0.00%	0.00%
Mississippi	0	2	0	1	0	-100.00%	0.00%
Missouri	0	0	0	0	0	0.00%	0.00%
Montana	1	0	0	0	0	0.00%	0.00%
Nevada	0	0	0	0	0	0.00%	0.00%
New Hampshire	1	2	0	0	0	0.00%	-100.00%
New Jersey	5	3	1	1	1	0.00%	-100.00%
New Mexico	0	0	0	0	0	0.00%	0.00%
New York	4	2	2	0	4	400.00%	0.00%
Ohio	0	0	0	0	0	0.00%	0.00%
Oklahoma	0	0	0	0	0	0.00%	0.00%
Oregon	0	1	0	0	0	0.00%	0.00%
Pennsylvania	1	0	0	0	1	100.00%	0.00%
Rhode Island	0	0	0	0	0	0.00%	0.00%
South Carolina	3	1	2	1	1	0.00%	-100.00%
Tennessee	0	0	0	0	0	0.00%	0.00%
Texas	5	6	0	3	0	-300.00%	-100.00%
Vermont	0	0	0	0	0	0.00%	0.00%
Virginia	6	6	1	1	1	0.00%	-83.33%
West Virginia	0	0	0	0	0	0.00%	0.00%
Wisconsin	0	0	0	0	0	0.00%	0.00%
Total	32	30	13	21	12	-42.86%	-62.50%

**MIGRATION OF FIRST-TIME FRESHMEN TRANSFERRING
FROM METHODIST UNIVERSITY
FALL 2005 - FALL 2009**

INSTITUTIONS	FALL	FALL	FALL	FALL	FALL	% Change	% Change
	2005	2006	2007	2008	2009	2008-2009	2005-2009
Senior Institutions							
Alabama	2	2	1	0	0	0.00%	-100.00%
Alaska	0	0	0	0	0	0.00%	0.00%
Arizona	1	2	1	2	1	-100.00%	0.00%
Arkansas	1	0	0	0	0	0.00%	-100.00%
California	0	0	0	0	1	100.00%	100.00%
Colorado	1	0	0	0	0	0.00%	-100.00%
Connecticut	2	1	1	1	1	0.00%	-100.00%
Delaware	0	0	1	1	0	-100.00%	0.00%
Dist. of Columbia	2	0	0	0	1	100.00%	-100.00%
Florida	5	5	4	8	5	-37.50%	0.00%
Georgia	1	0	1	0	1	100.00%	0.00%
Illinois	1	0	0	0	0	0.00%	-100.00%
Indiana	1	0	0	2	0	100.00%	-100.00%
Iowa	1	0	0	0	0	0.00%	-100.00%
Kansas	0	0	0	0	0	0.00%	0.00%
Kentucky	3	3	0	0	0	0.00%	-100.00%
Maine	0	1	2	0	1	100.00%	100.00%
Maryland	2	5	1	2	1	-100.00%	100.00%
Massachusetts	4	3	0	0	0	0.00%	-100.00%
Michigan	1	2	0	0	1	100.00%	0.00%
Minnesota	0	0	1	0	0	0.00%	0.00%
Mississippi	0	1	0	0	0	0.00%	0.00%
Missouri	0	0	0	0	0	0.00%	0.00%
Montana	0	0	0	0	0	0.00%	0.00%
Nebraska	0	0	0	0	0	0.00%	0.00%
Nevada	0	0	0	0	0	0.00%	0.00%
New Hampshire	0	3	0	1	0	100.00%	0.00%
New Jersey	2	0	0	0	0	0.00%	-100.00%
New York	2	4	1	1	2	100.00%	0.00%
Ohio	1	3	1	1	2	100.00%	100.00%
Oregon	1	0	0	0	0	0.00%	-100.00%
Pennsylvania	4	8	2	2	2	0.00%	-100.00%
Rhode Island	0	0	1	0	1	100.00%	100.00%
South Carolina	4	3	0	1	3	200.00%	-25.00%
Tennessee	0	0	0	0	0	0.00%	0.00%
Texas	0	1	0	0	0	0.00%	0.00%
Vermont	1	0	0	0	0	0.00%	-100.00%
Virginia	7	1	2	2	2	0.00%	-71.43%
Washington	1	0	0	0	0	0.00%	-100.00%
West Virginia	1	0	0	1	0	-100.00%	-100.00%
Wisconsin	0	0	1	0	0	0.00%	0.00%
Total	41	48	21	25	25	0.00%	-39.02%
Total First-Time Transfers	154	153	57	69	64	-7.25%	-58.44%

RETENTION



**FIRST-TIME FULL-TIME FRESHMEN RETENTION
FALL 2004-2010**

	2004		2005		2006		2007		2008		2009		2010	
	N	%	N	%	N	%	N	%	N	%	N	%	N	%
Original Cohort	435		387		449		426		439		472		531	
Enrolled 2ndYear	270	62.07%	225	58.14%	255	56.79%	253	59.39%	227	51.71%	288	61.02%		
Enrolled 3rdYear	226	51.95%	165	42.64%	190	42.32%	198	46.48%	178	40.55%				
Enrolled 4th Year	206	47.36%	154	39.79%	182	40.53%	185	43.43%						
After 4th Year														
Graduated	73	16.78%	55	14.21%	138	30.73%								
Enrolled	117	26.90%	90	23.26%	36	8.02%								
Total Retained	190	43.68%	145	37.47%	174	38.75%								
After 5th Year														
Graduated	176	40.46%	139	35.92%										
Enrolled	12	2.76%	9	2.33%										
Total Retained	188	43.22%	148	38.24%										
After 6th Year														
Graduated	190	43.68%												
Enrolled	1	0.23%												
Total Retained	191	43.91%												

**PERSISTENCE AND GRADUATION RATE
2004 COHORT OF FULL-TIME, FIRST-TIME FRESHMEN**

	International		African American		American Indian		Asian Pacific Islander		Hispanic		American Caucasian		Unknown		Overall	
	N	%	N	%	N	%	N	%	N	%	N	%	N	%	N	%
2004 Cohort	11	2.53%	82	18.85%	2	0.46%	12	2.76%	15	3.45%	290	66.67%	23	5.29%	435	100.00%
Graduated in 4 years	5	45.45%	7	8.54%	0	0.00%	4	33.33%	1	6.67%	51	17.59%	3	13.04%	71	16.32%
Graduated in 5 years	1	9.09%	6	7.32%	1	50.00%	2	16.67%	1	6.67%	87	30.00%	6	26.09%	104	23.91%
Graduated in 6 years	1	9.09%	6	7.32%	1	50.00%	2	16.67%	0	0.00%	5	1.72%	0	0.00%	15	3.45%
Graduated	7	63.64%	19	23.17%	2	100.00%	8	66.67%	2	13.33%	143	49.31%	9	39.13%	190	43.68%
Still Enrolled	0	0.00%	0	0.00%	0	0.00%	0	0.00%	0	0.00%	1	0.34%	0	0.00%	1	0.23%
Non-Completers	4	36.36%	63	76.83%	0	0.00%	4	33.33%	13	86.67%	146	50.34%	14	60.87%	244	56.09%
Transfer Out	2	18.18%	41	50.00%	0	0.00%	2	16.67%	9	60.00%	89	30.69%	10	43.48%	153	35.17%
Graduated at another Institution	1	9.09%	17	20.73%	0	0.00%	1	8.33%	3	20.00%	50	17.24%	3	13.04%	75	17.24%
Unknown	1	9.09%	5	6.10%	0	0.00%	1	8.33%	1	6.67%	7	2.41%	1	4.35%	16	3.68%

	Male		Female		Overall	
	N	%	N	%	N	%
2004 Cohort	292	67.13%	143	32.87%	435	100.00%
Graduated in 4 years	25	8.56%	46	32.17%	71	16.32%
Graduated in 5 years	82	28.08%	22	15.38%	104	23.91%
Graduated in 6 years	10	3.42%	5	3.50%	15	3.45%
Graduated	117	40.07%	73	51.05%	190	43.68%
Still Enrolled	0	0.00%	1	0.70%	1	0.23%
Non-Completers	175	59.93%	69	48.25%	244	56.09%
Transferred Out	117	40.07%	36	25.17%	159	36.55%
Graduated at another Institution	48	16.44%	27	18.88%	75	17.24%
Unknown	10	3.42%	6	4.20%	16	3.68%

	Both		Day**		Evening***		Overall	
	N	%	N	%	N	%	N	%
2004 Cohort	2	0.46%	423	97.24%	10	2.30%	435	100.00%
Graduated in 4 years	0	0.00%	70	16.55%	1	10.00%	71	16.32%
Graduated in 5 years	0	0.00%	104	24.59%	0	0.00%	104	23.91%
Graduated in 6 years	0	0.00%	15	3.55%	0	0.00%	15	3.45%
Graduated	0	0.00%	189	44.68%	1	10.00%	190	43.68%
Still Enrolled	0	0.00%	1	0.24%	0	0.00%	1	0.23%
Non-Completers	2	0.47%	233	55.08%	9	90.00%	244	56.09%
Transferred Out	2	0.47%	144	34.04%	7	70.00%	153	35.17%
Graduated at another Institution	0	0.00%	73	17.26%	2	20.00%	75	17.24%
Unknown	0	0.00%	16	3.78%	0	0.00%	16	3.68%

** First term at Methodist University was during the Day program.

*** First term at Methodist University was during the Evening program.

**PERSISTENCE AND GRADUATION RATE
2004 COHORT OF FULL-TIME, FIRST-TIME FRESHMEN**

BY TYPE OF FINANCIAL AID

	Federal Pell Grant		Other Federal Grant Aid		Institutional Scholarships And Grants		Presidential Scholarship		N.C. Legislative Tuition Grant		Any Loans	
	N	%	N	%	N	%	N	%	N	%	N	%
2004 Cohort	136	31.26%	67	15.40%	406	93.33%	135	31.03%	201	46.21%	332	76.32%
Graduated in 4 years	14	10.29%	3	4.48%	69	17.00%	32	23.70%	47	23.38%	47	14.16%
Graduated in 5 years	19	13.97%	10	14.93%	101	24.88%	52	38.52%	34	16.92%	81	24.40%
Graduated in 6 years	8	5.88%	5	7.46%	13	3.20%	4	2.96%	7	3.48%	10	3.01%
Graduated	41	30.15%	18	26.87%	183	45.07%	88	65.19%	88	43.78%	138	47.59%
Still Enrolled	0	0.00%	0	0.00%	0	0.00%	0	0.00%	0	0.00%	0	0.00%
Non-Completers	95	69.85%	49	73.13%	222	54.68%	46	34.07%	112	55.72%	194	58.43%
Transfer Out	60	44.12%	34	50.75%	139	34.24%	27	20.00%	68	33.83%	120	36.14%
Graduated at another												
Institution	27	19.85%	10	14.93%	69	17.00%	15	11.11%	38	18.91%	61	18.37%
Unknown	8	5.88%	5	7.46%	14	3.45%	4	2.96%	6	2.99%	13	3.92%

ACADEMIC



**ACADEMIC MAJORS BY SCHOOL
FALL 2006 - FALL 2010**

	Fall 2006		Fall 2007		Fall 2008		Fall 2009		Fall 2010		% Change 2009-2010	% Change 2006-2010
	N	%	N	%	N	%	N	%	N	%		
Reeves School of Business	692	32.70%	724	34.18%	730	33.33%	770	35.27%	757	31.33%	-1.69%	9.39%
Accounting	39	1.84%	37	1.75%	47	2.15%	47	2.15%	56	2.32%	19.15%	43.59%
Health Care Administration	1	0.05%	1	0.05%	0	0.00%	0	0.00%	1	0.04%	100.00%	0.00%
Sports Management	--	----	--	----	--	----	--	----	1	0.04%	NA	NA
No Concentration	38	1.80%	36	1.70%	47	2.15%	47	2.15%	54	2.24%	14.89%	42.11%
Business Administration	580	27.41%	589	27.81%	574	26.21%	623	28.54%	591	24.46%	-5.14%	1.90%
Health Care Administration	30	1.42%	33	1.56%	48	2.19%	36	1.65%	31	1.28%	-13.89%	3.33%
Professional Golf Management	346	16.35%	349	16.48%	337	15.39%	323	14.80%	309	12.79%	-4.33%	-10.69%
Professional Tennis Management	21	0.99%	23	1.09%	18	0.82%	31	1.42%	29	1.20%	-6.45%	38.10%
Resort Management	30	1.42%	23	1.09%	21	0.96%	31	1.42%	32	1.32%	3.23%	6.67%
Sports Management	--	----	1	0.05%	0	0.00%	47	2.15%	46	1.90%	-2.13%	NA
No Concentration	153	7.23%	160	7.55%	150	6.85%	155	7.10%	144	5.96%	-7.10%	-5.88%
Financial Economics	11	0.52%	14	0.66%	12	0.55%	19	0.87%	15	0.62%	-21.05%	36.36%
Resort Management	0	0.00%	0	0.00%	0	0.00%	0	0.00%	0	0.00%	0.00%	0.00%
No Concentration	11	0.52%	14	0.66%	12	0.55%	19	0.87%	15	0.62%	-21.05%	36.36%
Marketing	14	0.66%	22	1.04%	24	1.10%	22	1.01%	32	1.32%	45.45%	128.57%
Health Care Administration	1	0.05%	0	0.00%	0	0.00%	0	0.00%	0	0.00%	0.00%	-100.00%
Professional Golf Management	2	0.09%	0	0.00%	0	0.00%	4	0.18%	5	0.21%	25.00%	150.00%
Resort Management	0	0.00%	0	0.00%	0	0.00%	1	0.05%	2	0.08%	100.00%	200.00%
Sports Management	--	----	--	----	--	----	--	----	11	0.46%	NA	NA
No Concentration	11	0.52%	22	1.04%	24	1.10%	17	0.78%	14	0.58%	-17.65%	27.27%
Master of Business Administration	13	0.61%	11	0.52%	33	1.51%	59	2.70%	63	2.61%	6.78%	384.62%
Professional Accounting	0	0.00%	0	0.00%	0	0.00%	0	0.00%	0	0.00%	0.00%	0.00%
Sports Management	33	1.56%	41	1.94%	39	1.78%	0	0.00%	0	0.00%	0.00%	-100.00%
Undeclared	2	0.09%	10	0.47%	1	0.05%	0	0.00%	0	0.00%	0.00%	-100.00%

**ACADEMIC MAJORS BY SCHOOL
FALL 2006 - FALL 2010**

	Fall 2006		Fall 2007		Fall 2008		Fall 2009		Fall 2010		% Change 2009-2010	% Change 2006-2010
	N	%	N	%	N	%	N	%	N	%		
School of Arts and Humanities	152	7.18%	169	7.98%	177	8.08%	214	9.80%	223	9.23%	4.21%	46.71%
Art	4	0.19%	6	0.28%	8	0.37%	7	0.32%	6	0.25%	-14.29%	50.00%
Ceramic Sculpture	0	0.00%	0	0.00%	0	0.00%	0	0.00%	0	0.00%	0.00%	0.00%
Painting	--	----	--	----	--	----	--	----	1	0.04%	NA	NA
No Concentration	4	0.19%	6	0.28%	8	0.37%	7	0.32%	5	0.21%	-28.57%	25.00%
Art Education	1	0.05%	0	0.00%	1	0.05%	0	0.00%	1	0.04%	100.00%	0.00%
Church Music	0	0.00%	0	0.00%	0	0.00%	0	0.00%	0	0.00%	0.00%	0.00%
English	12	0.57%	18	0.85%	17	0.78%	14	0.64%	10	0.41%	-28.57%	-16.67%
Fine Arts Management	2	0.09%	1	0.05%	1	0.05%	0	0.00%	0	0.00%	0.00%	-100.00%
Music	0	0.00%	0	0.00%	0	0.00%	0	0.00%	0	0.00%	0.00%	0.00%
No Concentration	2	0.09%	1	0.05%	1	0.05%	0	0.00%	0	0.00%	0.00%	-100.00%
Foreign Language	0	0.00%	0	0.00%	0	0.00%	0	0.00%	0	0.00%	0.00%	0.00%
French	1	0.05%	1	0.05%	0	0.00%	1	0.05%	0	0.00%	-100.00%	-100.00%
Global Studies	9	0.43%	16	0.76%	14	0.64%	17	0.78%	19	0.79%	11.76%	111.11%
Graphic Design	--	----	--	----	6	0.27%	14	0.64%	27	1.12%	92.86%	NA
History	26	1.23%	18	0.85%	23	1.05%	35	1.60%	34	1.41%	-2.86%	30.77%
Music	13	0.61%	14	0.66%	15	0.68%	18	0.82%	19	0.79%	5.56%	46.15%
Fine Arts Management	0	0.00%	0	0.00%	0	0.00%	0	0.00%	0	0.00%	0.00%	0.00%
No Concentration	13	0.61%	14	0.66%	15	0.68%	18	0.82%	19	0.79%	5.56%	46.15%
Music Education	5	0.24%	4	0.19%	3	0.14%	9	0.41%	11	0.46%	22.22%	120.00%
Music Performance	0	0.00%	1	0.05%	0	0.00%	0	0.00%	0	0.00%	0.00%	0.00%
Psychology	5	0.24%	32	1.51%	37	1.69%	45	2.06%	48	1.99%	6.67%	860.00%
Counseling/Clinical	0	0.00%	2	0.09%	0	0.00%	1	0.05%	9	0.37%	800.00%	100.00%
Human Performance	0	0.00%	1	0.05%	1	0.05%	1	0.05%	6	0.25%	500.00%	100.00%
Human Performance and Clinical Counseling	--	----	--	----	--	----	11	0.50%	0	0.00%	-100.00%	NA
No Concentration	5	0.24%	29	1.37%	36	1.64%	32	1.47%	33	1.37%	3.13%	560.00%
Religion	6	0.28%	5	0.24%	9	0.41%	10	0.46%	7	0.29%	-30.00%	16.67%
Sociology	23	1.09%	34	1.61%	29	1.32%	25	1.15%	24	0.99%	-4.00%	4.35%
Spanish	3	0.14%	9	0.42%	5	0.23%	6	0.27%	5	0.21%	-16.67%	66.67%
Theatre	4	0.19%	1	0.05%	3	0.14%	7	0.32%	4	0.17%	-42.86%	0.00%
Writing	6	0.28%	7	0.33%	6	0.27%	6	0.27%	8	0.33%	33.33%	33.33%
Undeclared	2	0.09%	2	0.09%	0	0.00%	0	0.00%	0	0.00%	0.00%	-100.00%

**ACADEMIC MAJORS BY SCHOOL
FALL 2006 - FALL 2010**

	Fall 2006		Fall 2007		Fall 2008		Fall 2009		Fall 2010		% Change 2009-2010	% Change 2006-2010
	N	%	N	%	N	%	N	%	N	%		
Science and Human and Development	509	24.05%	549	25.92%	608	27.76%	655	30.00%	779	32.24%	18.93%	53.05%
Applied Exercise Science	10	0.47%	19	0.90%	21	0.96%	14	0.64%	25	1.03%	78.57%	150.00%
Athletic Training	47	2.22%	49	2.31%	51	2.33%	58	2.66%	77	3.19%	32.76%	63.83%
Biology	159	7.51%	142	6.70%	180	8.22%	203	9.30%	192	7.95%	-5.42%	20.75%
Health Occupations Science	1	0.05%	2	0.09%	0	0.00%	0	0.00%	17	0.70%	100.00%	100.00%
Microbiology / Cell Biology	1	0.05%	5	0.24%	0	0.00%	0	0.00%	5	0.21%	100.00%	400.00%
Zoology	1	0.05%	0	0.00%	0	0.00%	0	0.00%	5	0.21%	100.00%	400.00%
No Concentration	156	7.37%	135	6.37%	180	8.22%	203	9.30%	165	6.83%	-18.72%	5.77%
Chemistry	13	0.61%	23	1.09%	26	1.19%	26	1.19%	41	1.70%	57.69%	215.38%
Forensic Science	2	0.09%	0	0.00%	0	0.00%	0	0.00%	14	0.58%	100.00%	600.00%
No Concentration	11	0.52%	23	1.09%	26	1.19%	26	1.19%	27	1.12%	3.85%	145.45%
Computer Information Technology	15	0.71%	17	0.80%	24	1.10%	17	0.78%	26	1.08%	52.94%	73.33%
Business Information Systems	--	----	--	----	--	----	--	----	1	0.04%	NA	NA
Interactive Multimedia Application Devel.	--	----	--	----	--	----	--	----	3	0.12%	NA	NA
No Concentration	15	0.71%	17	0.80%	24	1.10%	17	0.78%	22	0.91%	29.41%	46.67%
Computer Science	20	0.95%	24	1.13%	34	1.55%	35	1.60%	25	1.03%	-28.57%	25.00%
Elementary Education	80	3.78%	77	3.64%	84	3.84%	76	3.48%	87	3.60%	14.47%	8.75%
Exercise Science	--	----	--	----	13	0.59%	34	1.56%	31	1.28%	-8.82%	NA
Mathematics	16	0.76%	18	0.85%	16	0.73%	18	0.82%	15	0.62%	-16.67%	-6.25%
Mathematics with teacher license	--	----	--	----	--	----	--	----	3	0.12%	NA	NA
Middle Grades Education	1	0.05%	1	0.05%	0	0.00%	0	0.00%	2	0.08%	100.00%	100.00%
Physical Education	31	1.47%	51	2.41%	47	2.15%	62	2.84%	46	1.90%	-25.81%	48.39%
Physical Education Teacher												
Preparation	12	0.57%	7	0.33%	4	0.18%	0	0.00%	5	0.21%	100.00%	-58.33%
Physician Assistant (GR)	86	4.06%	89	4.20%	93	4.25%	96	4.40%	98	4.06%	2.08%	13.95%
Pre-Nursing	--	----	--	----	--	----	--	----	87	3.60%	NA	NA
Science	0	0.00%	0	0.00%	1	0.05%	0	0.00%	0	0.00%	0.00%	0.00%
Secondary Education	0	0.00%	0	0.00%	0	0.00%	0	0.00%	2	0.08%	100.00%	100.00%
Special Education	7	0.33%	16	0.76%	12	0.55%	15	0.69%	17	0.70%	13.33%	142.86%
Strength and Conditioning	10	0.47%	5	0.24%	2	0.09%	1	0.05%	0	0.00%	-100.00%	-100.00%
Undeclared	2	0.09%	8	0.38%	0	0.00%	0	0.00%	0	0.00%	0.00%	-100.00%

**ACADEMIC MAJORS BY SCHOOL
FALL 2006 - FALL 2010**

	Fall 2006		Fall 2007		Fall 2008		Fall 2009		Fall 2010		% Change 2009-2010	% Change 2006-2010
	N	%	N	%	N	%	N	%	N	%		
School of Public Affairs	238	11.25%	269	12.70%	257	11.74%	302	13.83%	369	15.27%	22.19%	55.04%
Communications / Mass Media	25	1.18%	29	1.37%	25	1.14%	23	1.05%	25	1.03%	8.70%	0.00%
Interdisciplinary studies of clandestine labs	--	----	--	----	--	----	--	----	4	0.17%	NA	NA
Justice Studies	58	2.74%	65	3.07%	78	3.56%	106	4.86%	131	5.42%	23.58%	125.86%
Applied Forensic Science	4	0.19%	5	0.24%	12	0.55%	17	0.78%	30	1.24%	76.47%	650.00%
Human Services	--	----	--	----	--	----	--	----	4	0.17%	NA	NA
No Concentration	54	2.55%	60	2.83%	66	3.01%	89	4.08%	97	4.01%	8.99%	79.63%
Journalism	--	----	1	0.05%	2	0.09%	4	0.18%	4	0.17%	0.00%	NA
Master of Justice Administration	20	0.95%	22	1.04%	19	0.87%	27	1.24%	38	1.57%	40.74%	90.00%
Occupational Environmental Management	30	1.42%	29	1.37%	31	1.42%	25	1.15%	34	1.41%	36.00%	13.33%
Organizational Communication and Leadership	8	0.38%	5	0.24%	6	0.27%	3	0.14%	2	0.08%	-33.33%	-75.00%
Political Science	38	1.80%	45	2.12%	33	1.51%	33	1.51%	48	1.99%	45.45%	26.32%
International Relations	--	----	--	----	--	----	--	----	1	0.04%	NA	NA
No Concentration	38	1.80%	45	2.12%	33	1.51%	33	1.51%	47	1.95%	42.42%	23.68%
Social Work	56	2.65%	68	3.21%	62	2.83%	80	3.66%	83	3.44%	3.75%	48.21%
Licensure in School Social Work	0	0.00%	0	0.00%	0	0.00%	0	0.00%	0	0.00%	0.00%	0.00%
No Concentration	56	2.65%	68	3.21%	62	2.83%	80	3.66%	83	3.44%	3.75%	48.21%
Undeclared	3	0.14%	5	0.24%	1	0.05%	1	0.05%	0	0.00%	-100.00%	-100.00%
Other	525	24.81%	407	19.22%	418	19.09%	242	11.09%	288	11.92%	19.01%	-45.14%
Engineering	0	0.00%	0	0.00%	0	0.00%	0	0.00%	0	0.00%	0.00%	0.00%
General Studies	49	2.32%	35	1.65%	43	1.96%	26	1.19%	14	0.58%	-46.15%	-71.43%
Liberal Arts	0	0.00%	0	0.00%	0	0.00%	0	0.00%	0	0.00%	0.00%	0.00%
Undeclared	416	19.66%	316	14.92%	259	11.83%	167	7.65%	228	9.44%	36.53%	-45.19%
Non-Degree Seeking	60	2.84%	56	2.64%	116	5.30%	49	2.24%	46	1.90%	-6.12%	-23.33%

**ACADEMIC MAJORS BY SCHOOL
SPRING 2007 - SPRING 2011**

	Spring 2007		Spring 2008		Spring 2009		Spring 2010		Spring 2011		% Change 2010-2011	% Change 2007-2011
	N	%	N	%	N	%	N	%	N	%		
Reeves School of Business	603	30.91%	592	30.50%	635	33.81%	661	32.51%	628	28.74%	-4.99%	4.15%
Accounting	33	1.69%	25	1.29%	41	2.18%	56	2.75%	51	2.33%	-8.93%	54.55%
Health Care Administration	1	0.05%	0	0.00%	0	0.00%	0	0.00%	1	0.05%	100.00%	0.00%
Resort Management	--	----	--	----	--	----	--	----	1	0.05%	NA	NA
Professional Golf Management	--	----	--	----	--	----	--	----	1	0.05%	NA	NA
No Concentration	32	1.64%	25	1.29%	41	2.18%	56	2.75%	48	2.20%	-14.29%	50.00%
Business Administration	505	25.88%	486	25.04%	484	25.77%	519	25.53%	477	21.83%	-8.09%	-5.54%
Health Care Administration	28	1.44%	36	1.85%	41	2.18%	31	1.52%	25	1.14%	-19.35%	-10.71%
Management Information System	0	0.00%	0	0.00%	0	0.00%	0	0.00%	0	0.00%	0.00%	0.00%
Professional Golf Management	289	14.81%	276	14.22%	253	13.47%	262	12.89%	234	10.71%	-10.69%	-19.03%
Professional Tennis Management	21	1.08%	22	1.13%	21	1.12%	25	1.23%	29	1.33%	16.00%	38.10%
Resort Management	26	1.33%	19	0.98%	19	1.01%	25	1.23%	22	1.01%	-12.00%	-15.38%
Sports Management	--	----	--	----	--	----	36	1.77%	42	1.92%	16.67%	NA
No Concentration	141	7.23%	133	6.85%	150	7.99%	140	6.89%	125	5.72%	-10.71%	-11.35%
Financial Economics	11	0.56%	17	0.88%	15	0.80%	15	0.74%	16	0.73%	6.67%	45.45%
Resort Management	0	0.00%	0	0.00%	0	0.00%	0	0.00%	1	0.05%	100.00%	100.00%
No Concentration	11	0.56%	17	0.88%	15	0.80%	15	0.74%	15	0.69%	0.00%	36.36%
Marketing	17	0.87%	26	1.34%	19	1.01%	23	1.13%	27	1.24%	17.39%	58.82%
Health Care Administration	1	0.05%	0	0.00%	0	0.00%	0	0.00%	0	0.00%	0.00%	-100.00%
Professional Golf Management	1	0.05%	0	0.00%	0	0.00%	4	0.20%	4	0.18%	0.00%	300.00%
Resort Management	0	0.00%	0	0.00%	0	0.00%	1	0.05%	3	0.14%	200.00%	100.00%
Sports Management	--	----	--	----	--	----	--	----	8	0.37%	NA	NA
No Concentration	15	0.77%	26	1.34%	19	1.01%	18	0.89%	12	0.55%	-33.33%	-20.00%
Master of Business Administration	13	0.67%	8	0.41%	43	2.29%	47	2.31%	57	2.61%	21.28%	338.46%
Sports Management	24	1.23%	26	1.34%	32	1.70%	1	0.05%	0	0.00%	-100.00%	-100.00%
Professional Accounting	0	0.00%	0	0.00%	0	0.00%	0	0.00%	0	0.00%	0.00%	0.00%
Undeclared	0	0.00%	4	0.21%	1	0.05%	0	0.00%	0	0.00%	0.00%	0.00%

**ACADEMIC MAJORS BY SCHOOL
SPRING 2007 - SPRING 2011**

	Spring 2007		Spring 2008		Spring 2009		Spring 2010		Spring 2011		% Change 2010-2011	% Change 2007-2011
	N	%	N	%	N	%	N	%	N	%		
School of Arts and Humanities	147	7.53%	162	8.35%	163	8.68%	207	10.18%	195	8.92%	-5.80%	32.65%
Art	4	0.21%	6	0.31%	5	0.27%	5	0.25%	4	0.18%	-20.00%	0.00%
Art Education	1	0.05%	0	0.00%	1	0.05%	0	0.00%	0	0.00%	0.00%	-100.00%
Church Music	0	0.00%	0	0.00%	0	0.00%	0	0.00%	0	0.00%	0.00%	0.00%
English	14	0.72%	17	0.88%	15	0.80%	12	0.59%	12	0.55%	0.00%	-14.29%
Fine Arts Management	2	0.10%	1	0.05%	1	0.05%	0	0.00%	0	0.00%	0.00%	-100.00%
Foreign Language	0	0.00%	0	0.00%	0	0.00%	0	0.00%	0	0.00%	0.00%	0.00%
French	1	0.05%	1	0.05%	0	0.00%	0	0.00%	0	0.00%	0.00%	-100.00%
Global Studies	10	0.51%	13	0.67%	12	0.64%	17	0.84%	18	0.82%	5.88%	80.00%
Graphic Design	--	----	--	----	4	0.21%	17	0.84%	24	1.10%	41.18%	NA
History	20	1.03%	19	0.98%	27	1.44%	32	1.57%	25	1.14%	-21.88%	25.00%
International Studies	0	0.00%	1	0.05%	0	0.00%	0	0.00%	0	0.00%	0.00%	0.00%
Music	15	0.77%	13	0.67%	17	0.91%	18	0.89%	16	0.73%	-11.11%	6.67%
Music Education	5	0.26%	4	0.21%	4	0.21%	9	0.44%	8	0.37%	-11.11%	60.00%
Psychology	34	1.74%	32	1.65%	33	1.76%	45	2.21%	44	2.01%	-2.22%	29.41%
Counseling/Clinical	1	0.05%	0	0.00%	0	0.00%	1	0.05%	11	0.50%	1000.00%	1000.00%
Human Performance	0	0.00%	3	0.15%	3	0.16%	8	0.39%	7	0.32%	-12.50%	100.00%
No Concentration	33	1.69%	29	1.49%	30	1.60%	36	1.77%	26	1.19%	-27.78%	-21.21%
Religion	5	0.26%	6	0.31%	8	0.43%	6	0.30%	8	0.37%	33.33%	60.00%
Sociology	20	1.03%	31	1.60%	23	1.22%	29	1.43%	21	0.96%	-27.59%	5.00%
Spanish	4	0.21%	8	0.41%	5	0.27%	9	0.44%	4	0.18%	-55.56%	0.00%
Theatre	4	0.21%	2	0.10%	4	0.21%	4	0.20%	3	0.14%	-25.00%	-25.00%
Writing	7	0.36%	6	0.31%	4	0.21%	4	0.20%	8	0.37%	100.00%	14.29%
Undeclared	1	0.05%	2	0.10%	0	0.00%	0	0.00%	0	0.00%	0.00%	-100.00%

**ACADEMIC MAJORS BY SCHOOL
SPRING 2007 - SPRING 2011**

	Spring 2007		Spring 2008		Spring 2009		Spring 2010		Spring 2011		% Change 2010-2011	% Change 2007-2011
	N	%	N	%	N	%	N	%	N	%		
School of Science and Human Development	493	25.27%	552	28.44%	573	30.51%	702	34.53%	702	32.13%	0.00%	42.39%
Applied Exercise Science	9	0.46%	15	0.77%	22	1.17%	13	0.64%	23	1.05%	76.92%	155.56%
Athletic Training	32	1.64%	35	1.80%	35	1.86%	47	2.31%	58	2.65%	23.40%	81.25%
Biology	131	6.71%	133	6.85%	156	8.31%	194	9.54%	175	8.01%	-9.79%	33.59%
Health Occupations Science	0	0.00%	0	0.00%	0	0.00%	1	0.05%	15	0.69%	1400.00%	100.00%
Microbiology / Cell Biology	2	0.10%	0	0.00%	0	0.00%	0	0.00%	4	0.18%	100.00%	100.00%
Zoology	--	----	--	----	--	----	--	----	5	0.23%	NA	NA
No Concentration	129	6.61%	133	6.85%	156	8.31%	193	9.49%	151	6.91%	-21.76%	17.05%
Cardiac Rehabilitation	2	0.10%	0	0.00%	0	0.00%	0	0.00%	0	0.00%	0.00%	-100.00%
Chemistry	10	0.51%	19	0.98%	19	1.01%	27	1.33%	39	1.78%	44.44%	290.00%
Biochemistry	--	----	--	----	--	----	--	----	1	0.05%	NA	NA
Forensic Science	13	0.67%	15	0.77%	17	0.91%	17	0.84%	13	0.59%	-23.53%	0.00%
No Concentration	18	0.92%	19	0.98%	28	1.49%	35	1.72%	25	1.14%	-28.57%	38.89%
Computer Information Technology	75	3.84%	73	3.76%	73	3.89%	81	3.98%	21	0.96%	-74.07%	-72.00%
Business Information Systems	0	0.00%	5	0.26%	21	1.12%	35	1.72%	0	0.00%	-100.00%	0.00%
Interactive Multimedia Application Devel.	11	0.56%	16	0.82%	17	0.91%	17	0.84%	3	0.14%	-82.35%	-72.73%
No Concentration	1	0.05%	1	0.05%	0	0.00%	0	0.00%	18	0.82%	100.00%	1700.00%
Computer Science	32	1.64%	49	2.52%	42	2.24%	50	2.46%	24	1.10%	-52.00%	-25.00%
Elementary Education	9	0.46%	5	0.26%	3	0.16%	0	0.00%	78	3.57%	100.00%	766.67%
Exercise Science	--	----	--	----	--	----	--	----	34	1.56%	NA	NA
Mathematics	58	2.97%	64	3.30%	61	3.25%	64	3.15%	16	0.73%	-75.00%	-72.41%
Mathematics with teacher license	--	----	--	----	--	----	13	0.64%	1	0.05%	-92.31%	NA
Middle Grades Education	0	0.00%	0	0.00%	0	0.00%	0	0.00%	2	0.09%	200.00%	200.00%
Physical Education	10	0.51%	14	0.72%	9	0.48%	16	0.79%	16	0.73%	0.00%	60.00%
Physical Education and Health Education	--	----	--	----	--	----	--	----	36	1.65%	NA	NA
Physical Education Teacher Preparation	7	0.36%	4	0.21%	0	0.00%	0	0.00%	2	0.09%	200.00%	-71.43%
Physical Exercise Science	--	----	--	----	--	----	--	----	1	0.05%	NA	NA
Physician Assistant	58	2.97%	64	3.28%	61	3.13%	64	3.28%	66	3.02%	3.13%	13.79%
Pre-Nursing	--	----	--	----	--	----	13	0.67%	92	4.21%	607.69%	NA
Secondary Education	--	----	--	----	--	----	--	----	2	0.09%	NA	NA
Special Education	10	0.51%	14	0.72%	9	0.46%	16	0.82%	16	0.73%	0.00%	60.00%
Strength and Conditioning	7	0.36%	4	0.21%	0	0.00%	0	0.00%	0	0.00%	0.00%	-100.00%

**ACADEMIC MAJORS BY SCHOOL
SPRING 2007 - SPRING 2011**

	Spring 2007		Spring 2008		Spring 2009		Spring 2010		Spring 2011		% Change 2010-2011	% Change 2007-2011
	N	%	N	%	N	%	N	%	N	%		
School of Public Affairs	260	13.33%	274	14.12%	274	14.59%	359	17.66%	350	16.02%	-2.51%	34.62%
Communications / Mass Media	23	1.18%	28	1.44%	20	1.06%	20	0.98%	20	0.92%	0.00%	-13.04%
Journalism	0	0.00%	1	0.05%	2	0.11%	5	0.25%	6	0.27%	20.00%	100.00%
Justice Studies	45	2.31%	67	3.45%	71	3.78%	98	4.82%	115	5.26%	17.35%	155.56%
Applied Forensic Science	4	0.21%	9	0.46%	14	0.75%	18	0.89%	27	1.24%	50.00%	575.00%
Human Services	--	----	--	----	--	----	3	0.15%	2	0.09%	-33.33%	NA
No Concentration	41	2.10%	58	2.99%	57	3.04%	77	3.79%	86	3.94%	11.69%	109.76%
Master of Justice Administration	20	1.03%	8	0.41%	29	1.54%	43	2.12%	42	1.92%	-2.33%	110.00%
Occupational Environmental Management	27	1.38%	28	1.44%	29	1.54%	27	1.33%	35	1.60%	29.63%	29.63%
Organizational Communication and Leadership	9	0.46%	6	0.31%	3	0.16%	2	0.10%	2	0.09%	0.00%	-77.78%
Political Science	30	1.54%	38	1.96%	30	1.60%	37	1.82%	50	2.29%	35.14%	66.67%
International Relations	--	----	--	----	--	----	--	----	1	0.05%	NA	NA
No Concentration	30	1.54%	38	1.96%	30	1.60%	37	1.82%	49	2.24%	32.43%	63.33%
Social Work	75	3.84%	57	2.94%	59	3.14%	90	4.43%	80	3.66%	-11.11%	6.67%
Undeclared	1	0.05%	3	0.15%	1	0.05%	0	0.00%	0	0.00%	0.00%	-100.00%
Other	448	22.96%	361	18.60%	333	17.73%	234	11.51%	310	14.19%	32.48%	-30.80%
Engineer	0	0.00%	0	0.00%	0	0.00%	0	0.00%	0	0.00%	0.00%	0.00%
General Studies	26	1.33%	25	1.29%	22	1.17%	23	1.13%	4	0.18%	-82.61%	-84.62%
Undeclared	377	19.32%	279	14.37%	242	12.89%	171	8.41%	267	12.22%	56.14%	-29.18%
Non-Degree Seeking	45	2.31%	57	2.94%	69	3.67%	40	1.97%	39	1.78%	-2.50%	-13.33%

**CREDIT HOUR PRODUCTION BY DISCIPLINE
FALL 2006 - FALL 2010**

	Fall 2006		Fall 2007		Fall 2008		Fall 2009		Fall 2010		% Change 2009-2010	% Change 2005-2009
	N	%	N	%	N	%	N	%	N	%		
Reeves School of Business	6,393	22.42%	6,210	21.34%	6,413	22.30%	6,499	21.72%	6,469	19.51%	-0.46%	1.19%
Accounting	762	2.67%	804	2.76%	726	2.52%	704	2.35%	794	2.39%	12.78%	4.20%
Business Administration	1,615	5.66%	1,497	5.14%	1,579	5.49%	1,781	5.95%	1,489	4.49%	-16.40%	-7.80%
Financial Economics	1,251	4.39%	1,143	3.93%	1,089	3.79%	1,053	3.52%	966	2.91%	-8.26%	-22.78%
Health Care Administration	228	0.80%	207	0.71%	198	0.69%	183	0.61%	228	0.69%	24.59%	0.00%
Marketing	402	1.41%	369	1.27%	396	1.38%	402	1.34%	435	1.31%	8.21%	8.21%
Master of Business Administration	97	0.34%	84	0.29%	348	1.21%	507	1.69%	597	1.80%	17.75%	515.46%
Professional Golf Management	1,748	6.13%	1,747	6.00%	1,773	6.17%	1,523	5.09%	1,631	4.92%	7.13%	-6.69%
Professional Tennis Management	45	0.16%	55	0.19%	36	0.13%	83	0.28%	63	0.19%	-23.64%	40.00%
Resort Management	103	0.36%	124	0.43%	97	0.34%	111	0.37%	114	0.34%	2.70%	10.68%
Sports Management	142	0.50%	180	0.62%	171	0.59%	153	0.51%	152	0.46%	-0.65%	7.04%
School of Arts and Humanities	9,236	32.39%	8,744	30.04%	8,446	29.37%	8,931	29.84%	10,211	30.79%	14.34%	10.56%
Art	185	0.65%	155	0.53%	236	0.82%	238	0.80%	336	1.01%	41.18%	81.62%
English and Writing	2,916	10.23%	2,811	9.66%	2,825	9.83%	2,874	9.60%	3,207	9.67%	11.59%	9.98%
History	1,431	5.02%	1,377	4.73%	1,422	4.95%	1,251	4.18%	1,728	5.21%	38.13%	20.75%
Modern Languages and Literature	782	2.74%	585	2.01%	547	1.90%	860	2.87%	883	2.66%	2.67%	12.92%
English as Secondary Language	30	0.11%	36	0.12%	0	0.00%	36	0.12%	48	0.14%	33.33%	60.00%
Foreign Language	162	0.57%	83	0.29%	24	0.08%	125	0.42%	140	0.42%	12.00%	-13.58%
French	90	0.32%	35	0.12%	95	0.33%	90	0.30%	78	0.24%	-13.33%	-13.33%
German	9	0.03%	0	0.00%	0	0.00%	76	0.25%	21	0.06%	-72.37%	133.33%
Spanish	491	1.72%	431	1.48%	428	1.49%	533	1.78%	596	1.80%	11.82%	21.38%
Music	502	1.76%	620	2.13%	568	1.98%	540	1.80%	682	2.06%	26.39%	35.86%
Philosophy and Religion	1,599	5.61%	1,575	5.41%	1,434	4.99%	1,350	4.51%	1,536	4.63%	13.78%	-3.94%
Psychology	673	2.36%	670	2.30%	700	2.43%	816	2.73%	845	2.55%	3.55%	25.56%
Sociology	777	2.72%	600	2.06%	468	1.63%	561	1.87%	603	1.82%	7.49%	-22.39%
Theatre	371	1.30%	351	1.21%	246	0.86%	441	1.47%	391	1.18%	-11.34%	5.39%

**CREDIT HOUR PRODUCTION BY DISCIPLINE
FALL 2006 - FALL 2010**

	Fall 2006		Fall 2007		Fall 2008		Fall 2009		Fall 2010		% Change 2009-2010	% Change 2005-2009
	N	%	N	%	N	%	N	%	N	%		
School of Science and Human												
Development	8,475	29.72%	8,885	30.53%	9,281	32.28%	9,611	32.12%	10,895	32.85%	13.36%	28.55%
Athletic Training	200	0.70%	196	0.67%	263	0.91%	263	0.88%	458	1.38%	74.14%	129.00%
Biology	1,066	3.74%	1,236	4.25%	864	3.00%	985	3.29%	1,348	4.06%	36.85%	26.45%
Chemistry and Physical Science*	1,288	4.52%	1,251	4.30%	1,960	6.82%	1,922	6.42%	1,978	5.96%	2.91%	53.57%
Computer Science	1,134	3.98%	972	3.34%	819	2.85%	864	2.89%	1,077	3.25%	24.65%	-5.03%
Education	664	2.33%	706	2.43%	771	2.68%	726	2.43%	787	2.37%	8.40%	18.52%
Mathematics	1,878	6.59%	1,902	6.53%	2,118	7.37%	2,115	7.07%	2,406	7.25%	13.76%	28.12%
Nursing	--	----	--	----	--	----	--	----	29	0.09%	NA	NA
Physical Education and Exercise Science	917	3.22%	1,106	3.80%	1,032	3.59%	1,183	3.95%	1,167	3.52%	-1.35%	27.26%
Physician Assistant Studies	1,328	4.66%	1,516	5.21%	1,454	5.06%	1,553	5.19%	1,645	4.96%	5.92%	23.87%
School of Public Affairs	3,313	11.62%	3,208	11.02%	3,076	10.70%	3,271	10.93%	3,617	10.91%	10.58%	9.18%
Communications / Mass Media	906	3.18%	1,125	3.87%	1,111	3.86%	1,055	3.53%	1,184	3.57%	12.23%	30.68%
Justice Studies	531	1.86%	507	1.74%	456	1.59%	429	1.43%	423	1.28%	-1.40%	-20.34%
Master of Justice Administration	--	----	--	----	--	----	150	0.50%	177	0.53%	18.00%	NA
Military Science	71	0.25%	70	0.24%	67	0.23%	73	0.24%	72	0.22%	-1.37%	1.41%
Government Studies	1,190	4.17%	945	3.25%	965	3.36%	931	3.11%	1,179	3.56%	26.64%	-0.92%
Leadership Studies	171	0.60%	57	0.20%	57	0.20%	96	0.32%	78	0.24%	-18.75%	-54.39%
Occupational Environmental Management	141	0.49%	84	0.29%	148	0.51%	108	0.36%	165	0.50%	52.78%	17.02%
Paralegal Studies	195	0.68%	186	0.64%	99	0.34%	117	0.39%	195	0.59%	66.67%	0.00%
Political Science	683	2.40%	618	2.12%	661	2.30%	610	2.04%	741	2.23%	21.48%	8.49%
Social Work	615	2.16%	561	1.93%	477	1.66%	633	2.12%	582	1.75%	-8.06%	-5.37%
Other	1,098	3.85%	2,059	7.07%	1,537	5.35%	1,614	5.39%	1,972	5.95%	22.18%	79.60%
Honor's Program	104	0.36%	89	0.31%	109	0.38%	113	0.38%	86	0.26%	-23.89%	-17.31%
Interdisciplinary Studies	994	3.49%	1,970	6.77%	1,428	4.97%	1,501	5.02%	1,886	5.69%	25.65%	89.74%

* Includes SCI 142

**CREDIT HOUR PRODUCTION BY DISCIPLINE
SPRING 2007 - SPRING 2011**

	Spring 2007		Spring 2,008		Spring 2009		Spring 2010		Spring 2011		% Change 2010-2011	% Change 2007-2011
	N	%	N	%	N	%	N	%	N	%		
Reeves School of Business	5,776	22.68%	5,796	23.71%	5,694	23.18%	5,990	21.81%	5,943	19.91%	-0.78%	2.90%
Accounting	870	3.42%	639	2.61%	665	2.71%	733	2.67%	818	2.74%	11.60%	-5.98%
Business Administration	1,847	7.25%	2,142	8.76%	1,836	7.48%	1,796	6.54%	1,784	5.98%	-0.67%	-3.41%
Financial Economics	1,098	4.31%	1,023	4.18%	951	3.87%	1,026	3.74%	1,041	3.49%	1.46%	-5.19%
Health Care Administration	210	0.82%	183	0.75%	183	0.75%	234	0.85%	189	0.63%	-19.23%	-10.00%
Marketing	303	1.19%	495	2.02%	399	1.62%	426	1.55%	512	1.72%	20.19%	68.98%
Master of Business Administration	78	0.31%	60	0.25%	468	1.91%	507	1.85%	492	1.65%	-2.96%	530.77%
Professional Golf Management	1,005	3.94%	927	3.79%	914	3.72%	961	3.50%	888	2.98%	-7.55%	-11.60%
Professional Tennis Management	98	0.38%	74	0.30%	67	0.27%	91	0.33%	79	0.26%	-13.19%	-19.39%
Resort Management	144	0.57%	136	0.56%	99	0.40%	104	0.38%	72	0.24%	-30.77%	-50.00%
Sports Management	123	0.48%	117	0.48%	112	0.46%	112	0.41%	68	0.23%	-39.29%	-44.72%
School of Arts and Humanities	8,136	31.95%	7,806	31.93%	7,351	29.93%	8,627	31.41%	9,343	31.30%	8.31%	14.84%
Art	103	0.40%	105	0.43%	144	0.59%	237	0.86%	279	0.93%	17.72%	170.87%
English and Writing	2,181	8.56%	2,253	9.22%	2,136	8.70%	2,550	9.29%	2,760	9.25%	8.24%	26.55%
History	1,410	5.54%	1,398	5.72%	1,302	5.30%	1,422	5.18%	1,728	5.79%	21.52%	22.55%
Modern Languages and Literature	668	2.62%	419	1.71%	480	1.95%	598	2.18%	674	2.26%	12.71%	0.90%
English as Secondary Language	30	0.12%	42	0.17%	48	0.20%	30	0.11%	48	0.16%	60.00%	60.00%
Foreign Language	74	0.29%	33	0.13%	21	0.09%	66	0.24%	107	0.36%	62.12%	44.59%
French	78	0.31%	72	0.29%	72	0.29%	79	0.29%	78	0.26%	-1.27%	0.00%
German	6	0.02%	0	0.00%	3	0.01%	28	0.10%	15	0.05%	-46.43%	150.00%
Spanish	480	1.88%	272	1.11%	336	1.37%	395	1.44%	426	1.43%	7.85%	-11.25%
Music	570	2.24%	543	2.22%	578	2.35%	580	2.11%	562	1.88%	-3.02%	-1.40%
Philosophy and Religion	1,638	6.43%	1,548	6.33%	1,416	5.77%	1,683	6.13%	1,557	5.22%	-7.49%	-4.95%
Psychology	619	2.43%	633	2.59%	532	2.17%	609	2.22%	816	2.73%	33.99%	31.83%
Sociology	582	2.29%	549	2.25%	444	1.81%	531	1.93%	546	1.83%	2.82%	-6.19%
Theatre	365	1.43%	358	1.46%	319	1.30%	417	1.52%	421	1.41%	0.96%	15.34%

**CREDIT HOUR PRODUCTION BY DISCIPLINE
SPRING 2007 - SPRING 2011**

	Spring 2007		Spring 2,008		Spring 2009		Spring 2010		Spring 2011		% Change 2010-2011	% Change 2007-2011
	N	%	N	%	N	%	N	%	N	%		
School of Science and Human												
Development	8,004	31.43%	7,671	31.06%	8,130	33.10%	8,973	32.67%	10,152	34.01%	13.14%	26.84%
Athletic Training	227	0.89%	271	1.11%	270	1.10%	327	1.19%	474	1.59%	44.95%	108.81%
Biology	1,229	4.83%	1,301	5.32%	943	3.84%	1,084	3.95%	1,416	4.74%	30.63%	15.22%
Chemistry and Physical Science*	1,170	4.59%	584	2.39%	1,758	7.16%	1,854	6.75%	1,784	5.98%	-3.78%	52.48%
Computer Science	1,083	4.25%	834	3.41%	741	3.02%	888	3.23%	1,068	3.58%	20.27%	-1.39%
Education	757	2.97%	870	3.56%	771	3.14%	746	2.72%	748	2.51%	0.27%	-1.19%
Mathematics	1,437	5.64%	1,524	6.23%	1,524	6.21%	1,851	6.74%	2,028	6.79%	9.56%	41.13%
Physical Education and Exercise Science	948	3.72%	1,195	4.89%	1,017	4.14%	1,141	4.15%	1,260	4.22%	10.43%	32.91%
Physician Assistant Studies	1,153	4.53%	1,092	4.47%	1,106	4.50%	1,082	3.94%	1,374	4.60%	26.99%	19.17%
School of Public Affairs	3,075	12.08%	2,751	11.25%	2,755	11.22%	3,333	12.14%	3,650	12.23%	9.51%	18.70%
Communications / Mass Media	996	3.91%	943	3.86%	901	3.67%	1,021	3.72%	957	3.21%	-6.27%	-3.92%
Justice Studies	450	1.77%	513	2.10%	525	2.14%	516	1.88%	666	2.23%	29.07%	48.00%
Master of Justice Administration	--	----	--	----	--	----	222	0.81%	201	0.67%	NA	NA
Military Science	57	0.22%	74	0.30%	67	0.27%	55	0.20%	65	0.22%	18.18%	14.04%
Government Studies	1,104	4.34%	846	3.46%	809	3.29%	1,008	3.67%	1,272	4.26%	26.19%	15.22%
Leadership Studies	129	0.51%	87	0.36%	72	0.29%	159	0.58%	168	0.56%	5.66%	30.23%
Occupational Environmental Management	127	0.50%	129	0.53%	114	0.46%	132	0.48%	177	0.59%	34.09%	39.37%
Paralegal Studies	225	0.88%	174	0.71%	120	0.49%	207	0.75%	246	0.82%	18.84%	9.33%
Political Science	623	2.45%	456	1.87%	503	2.05%	510	1.86%	681	2.28%	33.53%	9.31%
Social Work	468	1.84%	375	1.53%	453	1.84%	511	1.86%	489	1.64%	-4.31%	4.49%
Other	475	1.87%	424	1.73%	629	2.56%	540	1.97%	759	2.54%	40.56%	59.79%
Honor's Program	62	0.24%	44	0.18%	68	0.28%	55	0.20%	56	0.19%	1.82%	-9.68%
Interdisciplinary Studies	413	1.62%	380	1.55%	561	2.28%	485	1.77%	703	2.36%	44.95%	70.22%

* Includes SCI 142

**METHODIST UNIVERSITY FINAL GRADE REPORT
FALL 2010 SEMESTER SUMMARY**

	Number	SEMESTER GRADE POINT AVERAGE												Semester GPA	Cumulative GPA				
		Withdrew		0.000-0.999		1.000-1.499		1.500-1.999		2.000-2.499		2.500-2.999				3.000-3.499		3.500-4.000	
		N	%	N	%	N	%	N	%	N	%	N	%			N	%	N	%
Undergraduate Program																			
Day**	1,762	30	1.70%	167	9.48%	128	7.26%	167	9.48%	307	17.42%	341	19.35%	343	19.47%	279	15.83%	2.471	2.602
Evening**	657	30	4.57%	43	6.54%	27	27.00%	42	6.39%	90	13.70%	105	15.98%	162	24.66%	158	24.05%	2.752	2.729
Online**	210	1	0.48%	16	7.62%	7	3.33%	15	7.14%	33	15.71%	34	16.19%	59	28.10%	45	21.43%	2.685	2.791
Class																			
Freshmen	1,042	42	4.03%	107	10.27%	97	9.31%	115	11.04%	178	17.08%	200	19.19%	169	16.22%	134	12.86%	2.352	2.370
Sophomore	560	10	1.79%	29	5.18%	32	5.71%	45	8.04%	112	20.00%	95	16.96%	128	22.86%	109	19.46%	2.660	2.771
Junior	312	0	0.00%	9	2.88%	13	4.17%	29	9.29%	52	16.67%	55	17.63%	75	24.04%	79	25.32%	2.816	2.888
Senior	257	0	0.00%	54	21.01%	7	2.72%	7	2.72%	25	9.73%	47	18.29%	63	24.51%	54	21.01%	2.395	2.917
Special	46	6	13.04%	7	15.22%	3	6.52%	1	2.17%	1	2.17%	3	6.52%	6	13.04%	19	41.30%	2.768	2.487
Ethnicity																			
American Indian	22	0	0.00%	2	9.09%	5	22.73%	5	22.73%	3	13.64%	0	0.00%	3	13.64%	4	18.18%	2.074	2.368
African American	434	20	4.61%	26	5.99%	40	9.22%	53	12.21%	91	20.97%	85	19.59%	72	16.59%	47	10.83%	2.391	2.408
Asian	28	0	0.00%	2	7.14%	2	7.14%	0	0.00%	2	7.14%	5	17.86%	8	28.57%	9	32.14%	2.842	2.961
Pacific Islander	9	0	0.00%	0	0.00%	0	0.00%	0	0.00%	0	0.00%	2	22.22%	4	44.44%	3	33.33%	3.342	3.305
Hispanic	100	3	3.00%	8	8.00%	7	7.00%	7	7.00%	14	14.00%	19	19.00%	22	22.00%	20	20.00%	2.615	2.612
American Caucasian	1,225	23	1.88%	92	7.51%	47	3.84%	62	5.06%	164	13.39%	212	17.31%	287	23.43%	338	27.59%	2.777	2.898
International	114	1	0.88%	1	0.88%	2	1.75%	12	10.53%	11	9.65%	16	14.04%	33	28.95%	38	33.33%	3.011	3.014
Multi-racial	75	2	2.67%	8	10.67%	4	5.33%	11	14.67%	13	17.33%	15	20.00%	15	20.00%	7	9.33%	2.389	2.427
No Report	210	9	4.29%	15	7.14%	14	6.67%	9	4.29%	32	15.24%	36	17.14%	52	24.76%	43	20.48%	2.669	2.625
Gender																			
Male	1,156	27	2.34%	98	8.48%	71	6.14%	91	7.87%	199	17.21%	204	17.65%	253	21.89%	213	18.43%	2.559	2.668
Female	1,061	31	2.92%	56	5.28%	50	4.71%	68	6.41%	131	12.35%	186	17.53%	243	22.90%	296	27.90%	2.814	2.840
Athletics																			
Men's Athletes Total*	353	3	0.85%	30	8.50%	41	11.61%	50	14.16%	79	22.38%	76	21.53%	55	15.58%	19	5.38%	2.249	2.274
Women's Athletes Total*	182	0	0.00%	8	4.40%	8	4.40%	20	10.99%	29	15.93%	40	21.98%	40	21.98%	37	20.33%	2.719	2.804
Athletes Overall*	535	3	0.56%	38	7.13%	49	9.19%	70	13.13%	108	20.26%	116	21.76%	95	17.64%	56	10.32%	2.409	2.454
Undergraduate Students	2,217	58	2.62%	154	6.95%	121	5.46%	159	7.17%	330	14.88%	390	17.59%	496	22.37%	509	22.96%	2.681	2.750

* Unduplicated - 22 athletes are in two sports.

** Duplicated count since some students take a combination of day, evening and online classes.

**METHODIST UNIVERSITY FINAL GRADE REPORT
SPRING 2011 SEMESTER SUMMARY**

	Number	Withdrawn		0.000-0.999		1.000-1.499		1.500-1.999		2.000-2.499		2.500-2.999		3.000-3.499		3.500-4.000		Semester GPA	Cumulative GPA
		N	%	N	%	N	%	N	%	N	%	N	%	N	%	N	%		
Undergraduate Program																			
Day**	1,579	27	1.71%	89	5.64%	87	5.51%	155	9.82%	266	16.85%	312	19.76%	358	22.67%	285	18.05%	2.636	2.682
Evening**	670	17	2.54%	32	4.78%	27	4.03%	49	7.31%	88	13.13%	116	17.31%	154	22.99%	187	27.91%	2.824	2.786
Online**	302	4	1.32%	20	6.62%	13	4.30%	20	6.62%	33	10.93%	51	16.89%	83	27.48%	78	25.83%	2.799	2.862
Class																			
Freshmen	970	26	2.68%	93	9.59%	75	7.73%	107	11.03%	153	15.77%	172	17.73%	186	19.18%	158	16.29%	2.455	2.540
Sophomore	482	8	1.66%	15	3.11%	19	3.94%	50	10.37%	89	18.46%	79	16.39%	112	23.24%	110	22.82%	2.754	2.786
Junior	278	2	0.72%	5	1.80%	9	3.24%	17	6.12%	49	17.63%	63	22.66%	74	26.62%	59	21.22%	2.855	2.853
Senior	251	3	1.20%	5	1.99%	7	2.79%	10	3.98%	25	9.96%	53	21.12%	72	28.69%	76	30.28%	3.014	2.914
Special	39	6	15.38%	2	5.13%	0	0.00%	0	0.00%	0	0.00%	2	5.13%	8	20.51%	21	53.85%	3.380	2.782
Ethnicity																			
American Indian	24	3	12.50%	2	8.33%	2	8.33%	2	8.33%	5	20.83%	2	8.33%	4	16.67%	4	16.67%	2.459	2.334
African American	441	11	2.49%	40	9.07%	44	9.98%	61	13.83%	91	20.63%	81	18.37%	65	14.74%	48	10.88%	2.302	2.373
Asian	26	0	0.00%	1	3.85%	0	0.00%	0	0.00%	6	23.08%	5	19.23%	4	15.38%	10	38.46%	3.010	2.919
Pacific Islander	9	0	0.00%	0	0.00%	0	0.00%	0	0.00%	2	22.22%	1	11.11%	2	22.22%	4	44.44%	3.201	3.247
Hispanic	112	1	0.89%	5	4.46%	5	4.46%	14	12.50%	13	11.61%	17	15.18%	27	24.11%	30	26.79%	2.764	2.748
American Caucasian	1,022	22	2.15%	56	5.48%	39	3.82%	72	7.05%	140	13.70%	190	18.59%	252	24.66%	251	24.56%	2.785	2.808
International	109	0	0.00%	1	0.92%	2	1.83%	10	9.17%	8	7.34%	20	18.35%	36	33.03%	32	29.36%	3.027	2.993
Multi-racial	78	1	1.28%	3	3.85%	10	12.82%	7	8.97%	13	16.67%	18	23.08%	20	25.64%	6	7.69%	2.483	2.464
No Report	199	7	3.52%	12	6.03%	8	4.02%	18	9.05%	38	19.10%	35	17.59%	42	21.11%	39	19.60%	2.652	2.694
Gender																			
Male	1,029	23	2.24%	74	7.19%	61	5.93%	107	10.40%	172	16.72%	201	19.53%	217	21.09%	174	16.91%	2.559	2.607
Female	991	22	2.22%	46	4.64%	49	4.94%	77	7.77%	144	14.53%	168	16.95%	235	23.71%	250	25.23%	2.781	2.782
Athletics																			
Men's Athletes Total*	237	0	0.00%	14	1.65%	16	1.88%	27	3.17%	58	6.82%	51	5.99%	53	6.23%	18	2.12%	2.456	2.498
Women's Athletes Total*	164	0	0.00%	1	0.61%	8	4.88%	13	7.93%	29	17.68%	36	21.95%	44	26.83%	33	20.12%	2.828	2.839
Athletes Overall*	401	0	0.00%	15	1.76%	24	2.82%	40	4.70%	87	10.22%	87	10.22%	97	11.40%	51	5.99%	2.623	2.678
Undergraduate Students	1,012	45	4.45%	120	11.86%	110	10.87%	184	18.18%	316	31.23%	369	36.46%	452	44.66%	424	41.90%	2.668	2.693

* Unduplicated - 24 athletes are in two sports and 1 athlete is in three sports.

** Duplicated count since some students take a combination of day, evening and online classes.

GRADUATES



**ASSOCIATE DEGREES AWARDED
ACADEMIC YEAR 2006-2007 THROUGH ACADEMIC YEAR 2010-2011**

	2006-2007		2007-2008		2008-2009		2009-2010		2010-2011		% Change 1-Year	% Change 5-Year
	N	%	N	%	N	%	N	%	N	%		
Reeves School of Business	1	7.69%	4	26.67%	2	16.67%	1	16.67%	0	0.00%	-100.00%	-100.00%
Accounting	0	0.00%	1	6.67%	1	8.33%	1	16.67%	0	0.00%	0.00%	0.00%
Business Administration	1	7.69%	3	20.00%	1	8.33%	0	0.00%	0	0.00%	0.00%	-100.00%
School of Arts and Humanities	5	38.46%	2	13.33%	4	33.33%	3	50.00%	2	25.00%	-33.33%	-60.00%
Arabic	0	0.00%	0	0.00%	1	8.33%	0	0.00%	0	0.00%	0.00%	0.00%
Chinese	0	0.00%	0	0.00%	0	0.00%	0	0.00%	0	0.00%	0.00%	0.00%
English	0	0.00%	0	0.00%	0	0.00%	0	0.00%	0	0.00%	0.00%	0.00%
History	0	0.00%	0	0.00%	0	0.00%	0	0.00%	1	12.50%	100.00%	100.00%
Korean	0	0.00%	0	0.00%	0	0.00%	0	0.00%	0	0.00%	0.00%	0.00%
Music	0	0.00%	0	0.00%	0	0.00%	1	16.67%	0	0.00%	0.00%	0.00%
Psychology	0	0.00%	0	0.00%	0	0.00%	0	0.00%	0	0.00%	0.00%	0.00%
Russian	0	0.00%	0	0.00%	1	8.33%	0	0.00%	0	0.00%	0.00%	0.00%
Sociology	1	7.69%	1	6.67%	2	16.67%	1	16.67%	0	0.00%	-100.00%	-100.00%
Spanish	4	30.77%	1	6.67%	0	0.00%	1	16.67%	1	12.50%	0.00%	-75.00%
Science and Human Development	0	0.00%	1	6.67%	0	0.00%	1	16.67%	0	0.00%	-100.00%	0.00%
Biology	0	0.00%	0	0.00%	0	0.00%	1	16.67%	0	0.00%	-100.00%	0.00%
Mathematics	0	0.00%	1	6.67%	0	0.00%	0	0.00%	0	0.00%	0.00%	0.00%
Science	0	0.00%	0	0.00%	0	0.00%	0	0.00%	0	0.00%	0.00%	0.00%
School of Public Affairs	1	7.69%	1	6.67%	1	8.33%	0	0.00%	2	25.00%	200.00%	100.00%
Communications	1	7.69%	0	0.00%	0	0.00%	0	0.00%	0	0.00%	0.00%	0.00%
Interdisciplinary studies of clandestine labs	--	----	--	----	--	----	--	----	2	25.00%	NA	NA
Justice Studies	0	0.00%	1	6.67%	1	8.33%	0	0.00%	0	0.00%	0.00%	0.00%
Political Science	0	0.00%	0	0.00%	0	0.00%	0	0.00%	0	0.00%	0.00%	0.00%
Other	6	46.15%	7	46.67%	5	41.67%	1	16.67%	4	50.00%	300.00%	-33.33%
General Studies	6	46.15%	7	46.67%	5	41.67%	1	16.67%	4	50.00%	-80.00%	-75.00%
Liberal Arts	0	0.00%	0	0.00%	0	0.00%	0	0.00%	0	0.00%	0.00%	0.00%
Total Associate Degrees	13	100.00%	15	100.00%	12	100.00%	6	100.00%	8	100.00%	33.33%	-38.46%

**BACHELOR DEGREES AWARDED
ACADEMIC YEAR 2006-2007 THROUGH ACADEMIC YEAR 2010-2011**

	2006-2007		2007-2008		2008-2009		2009-2010		2010-2011		% Change 1-Year	% Change 5-Year
	N	%	N	%	N	%	N	%	N	%		
Reeves School of Business	147	50.69%	156	46.43%	141	47.80%	132	44.75%	130	43.77%	-1.52%	-11.56%
Accounting	15	5.17%	11	3.27%	4	1.36%	11	3.73%	6	2.02%	-45.45%	-60.00%
Business Administration	117	40.34%	123	36.61%	117	39.66%	108	36.61%	108	36.36%	0.00%	-7.69%
Financial Economics	1	0.34%	6	1.79%	9	3.05%	5	1.69%	4	1.35%	-20.00%	300.00%
Marketing	7	2.41%	9	2.68%	6	2.03%	8	2.71%	12	4.04%	50.00%	71.43%
Sports Management	7	2.41%	7	2.08%	5	1.69%	0	0.00%	0	0.00%	0.00%	-100.00%
School of Arts and Humanities	35	12.07%	48	14.29%	40	13.56%	32	10.85%	32	10.77%	0.00%	-8.57%
Art	0	0.00%	1	0.30%	1	0.34%	0	0.00%	2	0.67%	200.00%	200.00%
Art Education	0	0.00%	0	0.00%	0	0.00%	0	0.00%	0	0.00%	0.00%	0.00%
Church Music	0	0.00%	0	0.00%	0	0.00%	0	0.00%	0	0.00%	0.00%	0.00%
English	3	1.03%	3	0.89%	3	1.02%	2	0.68%	2	0.67%	0.00%	-33.33%
Fine Arts Management	0	0.00%	0	0.00%	0	0.00%	0	0.00%	0	0.00%	0.00%	0.00%
French with Teacher Licensure	0	0.00%	0	0.00%	0	0.00%	0	0.00%	0	0.00%	0.00%	0.00%
Global Studies	2	0.69%	1	0.30%	4	1.36%	5	1.69%	7	2.36%	40.00%	250.00%
History	13	4.48%	11	3.27%	10	3.39%	4	1.36%	6	2.02%	50.00%	-53.85%
Music	3	1.03%	1	0.30%	5	1.69%	0	0.00%	2	0.67%	200.00%	-33.33%
Music Education	0	0.00%	1	0.30%	1	0.34%	2	0.68%	0	0.00%	-100.00%	0.00%
Music Performance	0	0.00%	1	0.30%	0	0.00%	0	0.00%	1	0.34%	100.00%	100.00%
Piano Performance	0	0.00%	0	0.00%	0	0.00%	0	0.00%	0	0.00%	0.00%	0.00%
Religion	2	0.69%	2	0.60%	1	0.34%	1	0.34%	0	0.00%	-100.00%	-100.00%
Psychology	4	1.38%	9	2.68%	2	0.68%	8	2.71%	2	0.67%	-75.00%	-50.00%
Sociology	6	2.07%	15	4.46%	12	4.07%	4	1.36%	6	2.02%	50.00%	0.00%
Spanish	1	0.34%	3	0.89%	1	0.34%	3	1.02%	3	1.01%	0.00%	200.00%
Writing	1	0.34%	0	0.00%	0	0.00%	2	0.68%	1	0.34%	-50.00%	0.00%
Theatre	0	0.00%	0	0.00%	0	0.00%	1	0.34%	0	0.00%	-100.00%	0.00%

**BACHELOR DEGREES AWARDED
ACADEMIC YEAR 2006-2007 THROUGH ACADEMIC YEAR 2010-2011**

	2006-2007		2007-2008		2008-2009		2009-2010		2010-2011		% Change 1-Year	% Change 5-Year
	N	%	N	%	N	%	N	%	N	%		
School of Science and Human Development	55	18.97%	80	23.81%	63	21.36%	88	29.83%	74	24.92%	-15.91%	34.55%
Applied Exercise Science	7	2.41%	3	0.89%	1	0.34%	0	0.00%	2	0.67%	200.00%	-71.43%
Athletic Training	3	1.03%	7	2.08%	2	0.68%	4	1.36%	5	1.68%	25.00%	66.67%
Biology	18	6.21%	23	6.85%	18	6.10%	29	9.83%	19	6.40%	-34.48%	5.56%
Cardiac Rehabilitation	0	0.00%	2	0.60%	0	0.00%	0	0.00%	0	0.00%	0.00%	0.00%
Chemistry	4	1.38%	1	0.30%	3	1.02%	7	2.37%	6	2.02%	-14.29%	50.00%
Computer Science	2	0.69%	2	0.60%	2	0.68%	7	2.37%	3	1.01%	-57.14%	50.00%
Computer Information Technology	0	0.00%	1	0.30%	0	0.00%	0	0.00%	2	0.67%	0.00%	0.00%
Elementary Education	6	2.07%	17	5.06%	14	4.75%	9	3.05%	10	3.37%	11.11%	66.67%
Exercise Science	--	----	3	0.89%	2	0.68%	9	3.05%	10	3.37%	11.11%	NA
Middle Grades Education	0	0.00%	3	0.89%	1	0.34%	0	0.00%	0	0.00%	0.00%	0.00%
Mathematics	2	0.69%	2	0.60%	1	0.34%	5	1.69%	5	1.68%	0.00%	150.00%
Mathematics with Teacher Licensure	0	0.00%	0	0.00%	1	0.34%	2	0.68%	0	0.00%	100.00%	100.00%
Physical Education	8	2.76%	8	2.38%	6	2.03%	6	2.03%	5	1.68%	0.00%	-33.33%
Physical Education with Teacher Licensure	1	0.34%	1	0.30%	5	1.69%	4	1.36%	2	0.67%	-20.00%	0.00%
Special Education	1	0.34%	3	0.89%	6	2.03%	5	1.69%	5	1.68%	-16.67%	150.00%
Strength and Conditioning	2	0.69%	4	1.19%	1	0.34%	1	0.34%	0	0.00%	0.00%	-200.00%
School of Public Affairs	57	19.66%	55	16.37%	51	17.29%	43	14.58%	61	20.54%	41.86%	7.02%
Communications	7	2.41%	5	1.49%	4	1.36%	5	1.69%	9	3.03%	80.00%	28.57%
Journalism	--	----	--	----	1	0.34%	2	0.68%	3	1.01%	50.00%	NA
Justice Studies	13	4.48%	11	3.27%	13	4.41%	14	4.75%	20	6.73%	42.86%	53.85%
Occupational Environmental Management	6	2.07%	6	1.79%	8	2.71%	6	2.03%	8	2.69%	33.33%	33.33%
Organizational Communication and Leadership	3	1.03%	3	0.89%	2	0.68%	1	0.34%	1	0.34%	0.00%	-66.67%
Political Science	9	3.10%	12	3.57%	10	3.39%	6	2.03%	9	3.03%	50.00%	0.00%
Social Work	19	6.55%	18	5.36%	13	4.41%	9	3.05%	11	3.70%	22.22%	-42.11%
Total Bachelor Degrees	294	101.38%	339	100.89%	295	93.95%	295	100.00%	297	100.00%	0.68%	1.02%

**MASTER'S DEGREES AWARDED
ACADEMIC YEAR 2006-2007 THROUGH ACADEMIC YEAR 2010-2011**

	2006-2007		2007-2008		2008-2009		2009-2010		2010-2011		% Change 1-Year	% Change 5-Year
	N	%	N	%	N	%	N	%	N	%		
Reeves School of Business			11	22.92%	1	2.63%	32	49.23%	36	42.35%	12.50%	NA
Business Administration	--	---	11	22.92%	1	2.63%	32	49.23%	36	42.35%	12.50%	NA
School of Science and Human Development	28	100.00%	24	50.00%	32	84.21%	31	47.69%	31	36.47%	0.00%	10.71%
Physician Assistant	28	100.00%	24	50.00%	32	84.21%	31	47.69%	31	36.47%	0.00%	10.71%
School of Public Affairs			13	27.08%	5	13.16%	2	3.08%	18	21.18%	800.00%	NA
Justice Administration	--	---	13	27.08%	5	13.16%	2	3.08%	18	21.18%	800.00%	NA
Total Master's Degrees	28	100.00%	48	100.00%	38	100.00%	65	100.00%	85	100.00%	30.77%	203.57%

**PLACEMENT INFORMATION
ACADEMIC YEAR 2008-2009
BY ACADEMIC PROGRAM**

	Have a Job						Graduate School					
	Yes		No		NA		Yes		No		NA	
	N	%	N	%	N	%	N	%	N	%	N	%
Reeves School of Business	26	16.99%	0	0.00%	127	83.01%	8	5.23%	0	0.00%	145	94.77%
Accounting	0	0.00%	0	0.00%	5	100.00%	0	0.00%	0	0.00%	5	100.00%
Business Administration	17	13.39%	0	0.00%	110	86.61%	4	3.15%	0	0.00%	123	96.85%
Health Care Administration	11	84.62%	0	0.00%	2	15.38%	0	0.00%	0	0.00%	13	100.00%
Professional Golf Management	0	0.00%	0	0.00%	60	100.00%	0	0.00%	0	0.00%	60	100.00%
Professional Tennis Management	1	50.00%	0	0.00%	1	50.00%	0	0.00%	0	0.00%	2	100.00%
Resort Management	3	75.00%	0	0.00%	1	25.00%	1	25.00%	0	0.00%	3	75.00%
Sport Management	0	0.00%	0	0.00%	0	0.00%	0	0.00%	0	0.00%	0	0.00%
No Concentration	2	4.17%	0	0.00%	46	95.83%	3	6.25%	0	0.00%	45	93.75%
Financial Economics	1	16.67%	0	0.00%	8	83.33%	3	16.67%	0	0.00%	6	83.33%
Marketing	7	70.00%	0	0.00%	3	30.00%	0	0.00%	0	0.00%	10	100.00%
Professional Tennis Management	0	0.00%	0	0.00%	0	0.00%	0	0.00%	0	0.00%	0	0.00%
No Concentration	7	70.00%	0	0.00%	3	30.00%	0	0.00%	0	0.00%	10	100.00%
Master's in Business Administration	1	100.00%	0	0.00%	0	0.00%	0	0.00%	0	0.00%	1	100.00%
Sport Management	0	0.00%	0	0.00%	1	100.00%	1	100.00%	0	0.00%	0	0.00%

**PLACEMENT INFORMATION
ACADEMIC YEAR 2008-2009
BY ACADEMIC PROGRAM**

	Have a Job						Graduate School					
	Yes		No		NA		Yes		No		NA	
	N	%	N	%	N	%	N	%	N	%	N	%
Science and Human and Development	58	62.37%	1	1.08%	34	36.56%	9	9.68%	0	0.00%	84	90.32%
Athletic Training	0	0.00%	0	0.00%	2	100.00%	0	0.00%	0	0.00%	2	100.00%
Biology	6	35.29%	0	0.00%	11	64.71%	6	35.29%	0	0.00%	11	64.71%
Health Occupations Science	1	20.00%	0	0.00%	4	80.00%	2	40.00%	0	0.00%	3	60.00%
Microbiology / Cell Biology	4	44.44%	0	0.00%	5	55.56%	3	33.33%	0	0.00%	6	66.67%
Zoology	1	50.00%	0	0.00%	1	50.00%	0	0.00%	0	0.00%	2	100.00%
No Concentration	0	0.00%	0	0.00%	1	100.00%	1	100.00%	0	0.00%	0	0.00%
Chemistry	0	0.00%	0	0.00%	3	100.00%	0	0.00%	0	0.00%	3	100.00%
Computer Information Technology	0	0.00%	0	0.00%	0	0.00%	0	0.00%	0	0.00%	0	0.00%
Computer Science	1	50.00%	0	0.00%	1	50.00%	0	0.00%	0	0.00%	2	100.00%
Elementary Education	10	50.00%	1	5.00%	9	45.00%	0	0.00%	0	0.00%	20	100.00%
Mathematics	0	0.00%	0	0.00%	2	100.00%	0	0.00%	0	0.00%	2	100.00%
Physical Education and Exercise Science	10	66.67%	0	0.00%	5	33.33%	3	20.00%	0	0.00%	12	80.00%
Physician Assistant Studies	31	96.88%	0	0.00%	1	3.13%	0	0.00%	0	0.00%	32	100.00%

**PLACEMENT INFORMATION
ACADEMIC YEAR 2008-2009
BY ACADEMIC PROGRAM**

	Have a Job						Graduate School					
	Yes		No		NA		Yes		No		NA	
	N	%	N	%	N	%	N	%	N	%	N	%
School of Arts and Humanities	4	9.09%	0	0.00%	40	90.91%	4	9.09%	0	0.00%	40	90.91%
Art	0	0.00%	0	0.00%	1	100.00%	0	0.00%	0	0.00%	1	100.00%
Ceramic Sculpture	0	0.00%	0	0.00%	1	100.00%	0	0.00%	0	0.00%	1	0.00%
No Concentration	0	0.00%	0	0.00%	0	0.00%	0	0.00%	0	0.00%	0	0.00%
Art Education	0	0.00%	0	0.00%	0	0.00%	0	0.00%	0	0.00%	0	0.00%
English	0	0.00%	0	0.00%	3	100.00%	1	33.33%	0	0.00%	2	66.67%
History	1	9.09%	0	0.00%	10	90.91%	1	9.09%	0	0.00%	10	90.91%
Music	0	0.00%	0	0.00%	6	100.00%	0	0.00%	0	0.00%	6	100.00%
Music Performance	0	0.00%	0	0.00%	0	0.00%	0	0.00%	0	0.00%	0	0.00%
Modern Languages and Literature	0	0.00%	0	0.00%	2	100.00%	0	0.00%	0	0.00%	2	100.00%
Psychology	3	75.00%	0	0.00%	1	25.00%	2	50.00%	0	0.00%	2	50.00%
Philosophy and Religion	0	0.00%	0	0.00%	1	100.00%	0	0.00%	0	0.00%	1	100.00%
Sociology	0	0.00%	0	0.00%	15	100.00%	0	0.00%	0	0.00%	15	100.00%
Spanish	0	0.00%	0	0.00%	1	100.00%	0	0.00%	0	0.00%	1	100.00%
Theatre	0	0.00%	0	0.00%	0	0.00%	0	0.00%	0	0.00%	0	0.00%
Writing	0	0.00%	0	0.00%	0	0.00%	0	0.00%	0	0.00%	0	0.00%

**PLACEMENT INFORMATION
ACADEMIC YEAR 2008-2009
BY ACADEMIC PROGRAM**

	Have a Job						Graduate School					
	Yes		No		NA		Yes		No		NA	
	N	%	N	%	N	%	N	%	N	%	N	%
School of Public Affairs	39	44.32%	1	1.14%	48	54.55%	12	13.64%	0	0.00%	76	86.36%
Communications / Mass Media	2	33.33%	0	0.00%	4	66.67%	0	0.00%	0	0.00%	6	100.00%
Government Studies	2	66.67%	0	0.00%	1	33.33%	1	33.33%	0	0.00%	2	66.67%
Justice Studies	2	10.53%	0	0.00%	17	89.47%	0	0.00%	0	0.00%	19	100.00%
Master's in Justice Administration	0	0.00%	0	0.00%	5	100.00%	0	0.00%	0	0.00%	5	100.00%
Occupational Environmental Management	7	87.50%	0	0.00%	1	12.50%	0	0.00%	0	0.00%	8	100.00%
Organizational Communication and Leadership	0	0.00%	0	0.00%	2	0.00%	0	0.00%	0	0.00%	2	0.00%
Paralegal Studies	12	75.00%	0	0.00%	4	25.00%	5	31.25%	0	0.00%	11	68.75%
Political Science	6	40.00%	1	6.67%	8	53.33%	3	20.00%	0	0.00%	12	80.00%
Social Work	8	57.14%	0	0.00%	6	42.86%	3	21.43%	0	0.00%	11	78.57%
Licensure in School Social Work	2	50.00%	0	0.00%	2	50.00%	0	0.00%	0	0.00%	0	0.00%
No Concentration	6	60.00%	0	0.00%	4	40.00%	3	21.43%	0	0.00%	11	78.57%
Overall	127	33.60%	2	0.53%	249	65.87%	33	8.73%	0	0.00%	345	91.27%

**PLACEMENT INFORMATION
ACADEMIC YEAR 2009-2010
BY ACADEMIC PROGRAM**

	Have a Job						Graduate School					
	Yes		No		NA		Yes		No		NA	
	N	%	N	%	N	%	N	%	N	%	N	%
Reeves School of Business	55	34.38%	0	0.00%	105	65.63%	3	1.88%	9	5.63%	148	92.50%
Accounting	1	9.09%	0	0.00%	10	90.91%	2	18.18%	0	0.00%	9	81.82%
Business Administration	49	46.67%	0	0.00%	56	53.33%	1	0.95%	4	3.81%	100	95.24%
Health Care Administration	3	37.50%	0	0.00%	5	62.50%	1	12.50%	2	25.00%	5	62.50%
Professional Golf Management	44	100.00%	0	0.00%	0	0.00%	0	0.00%	0	0.00%	44	100.00%
Professional Tennis Management	2	66.67%	0	0.00%	1	33.33%	0	0.00%	2	66.67%	1	33.33%
Resort Management	0	0.00%	0	0.00%	4	100.00%	0	0.00%	0	0.00%	4	100.00%
Sport Management	0	0.00%	0	0.00%	0	0.00%	0	0.00%	0	0.00%	0	0.00%
No Concentration	0	0.00%	0	0.00%	46	100.00%	0	0.00%	0	0.00%	46	100.00%
Financial Economics	0	16.67%	0	0.00%	5	83.33%	0	16.67%	0	0.00%	5	83.33%
Marketing	2	28.57%	0	0.00%	5	71.43%	0	0.00%	2	28.57%	5	71.43%
Professional Tennis Management	0	0.00%	0	0.00%	0	0.00%	0	0.00%	0	0.00%	0	0.00%
No Concentration	2	28.57%	0	0.00%	5	71.43%	0	0.00%	2	28.57%	5	71.43%
Master's in Business Administration	3	9.38%	0	0.00%	29	90.63%	0	0.00%	3	9.38%	29	90.63%
Sport Management	0	0.00%	0	0.00%	0	0.00%	0	0.00%	0	0.00%	0	0.00%

**PLACEMENT INFORMATION
ACADEMIC YEAR 2009-2010
BY ACADEMIC PROGRAM**

	Have a Job						Graduate School					
	Yes		No		NA		Yes		No		NA	
	N	%	N	%	N	%	N	%	N	%	N	%
Science and Human and Development	42	38.18%	0	0.00%	68	61.82%	4	3.64%	11	10.00%	95	86.36%
Athletic Training	0	0.00%	0	0.00%	4	100.00%	0	0.00%	0	0.00%	4	100.00%
Biology	0	0.00%	0	0.00%	29	100.00%	0	0.00%	0	0.00%	29	100.00%
Health Occupations Science	0	0.00%	0	0.00%	9	100.00%	0	0.00%	0	0.00%	9	100.00%
Microbiology / Cell Biology	0	0.00%	0	0.00%	16	100.00%	0	0.00%	0	0.00%	16	100.00%
Zoology	0	0.00%	0	0.00%	2	100.00%	0	0.00%	0	0.00%	2	100.00%
No Concentration	0	0.00%	0	0.00%	2	100.00%	0	0.00%	0	0.00%	2	100.00%
Chemistry	0	0.00%	0	0.00%	3	100.00%	0	0.00%	0	0.00%	3	100.00%
Computer Information Technology	0	0.00%	0	0.00%	0	0.00%	0	0.00%	0	0.00%	0	0.00%
Computer Science	0	0.00%	0	0.00%	6	100.00%	0	0.00%	0	0.00%	6	100.00%
Elementary Education	9	64.29%	0	0.00%	5	35.71%	0	0.00%	9	64.29%	5	35.71%
Exercise Science	1	14.29%	0	0.00%	6	85.71%	1	14.29%	1	14.29%	5	71.43%
Mathematics	0	0.00%	0	0.00%	6	100.00%	0	0.00%	0	0.00%	6	100.00%
Physical Education	1	20.00%	0	0.00%	4	80.00%	0	0.00%	1	20.00%	4	80.00%
Physical Education with Teacher Preparation	0	0.00%	0	0.00%	4	100.00%	0	0.00%	0	0.00%	2	100.00%
Physician Assistant Studies	31	100.00%	0	0.00%	0	0.00%	1	3.23%	0	0.00%	30	96.77%
Strength and Conditioning	0	0.00%	0	0.00%	1	100.00%	2	66.67%	0	0.00%	1	33.33%

**PLACEMENT INFORMATION
ACADEMIC YEAR 2009-2010
BY ACADEMIC PROGRAM**

	Have a Job						Graduate School					
	Yes		No		NA		Yes		No		NA	
	N	%	N	%	N	%	N	%	N	%	N	%
School of Arts and Humanities	3	9.38%	0	0.00%	31	96.88%	0	0.00%	3	8.82%	31	91.18%
Art	0	0.00%	0	0.00%	0	0.00%	0	0.00%	0	0.00%	0	0.00%
Ceramic Sculpture	0	0.00%	0	0.00%	0	0.00%	0	0.00%	0	0.00%	0	0.00%
No Concentration	0	0.00%	0	0.00%	0	0.00%	0	0.00%	0	0.00%	0	0.00%
Art Education	0	0.00%	0	0.00%	0	0.00%	0	0.00%	0	0.00%	0	0.00%
English	0	0.00%	0	0.00%	2	100.00%	0	0.00%	0	0.00%	2	100.00%
History	0	0.00%	0	0.00%	9	100.00%	0	0.00%	0	0.00%	9	100.00%
Music	2	0.00%	0	0.00%	3	100.00%	0	0.00%	2	0.00%	3	100.00%
Philosophy and Religion	0	0.00%	0	0.00%	1	100.00%	0	0.00%	0	0.00%	1	100.00%
Psychology	0	0.00%	0	0.00%	8	100.00%	0	0.00%	0	0.00%	8	100.00%
Sociology	1	33.33%	0	0.00%	2	66.67%	0	0.00%	1	33.33%	2	66.67%
Spanish	0	0.00%	0	0.00%	3	100.00%	0	0.00%	0	0.00%	3	100.00%
Theatre	0	0.00%	0	0.00%	1	0.00%	0	0.00%	0	0.00%	1	0.00%
Writing	0	0.00%	0	0.00%	2	0.00%	0	0.00%	0	0.00%	2	0.00%

**PLACEMENT INFORMATION
ACADEMIC YEAR 2009-2010
BY ACADEMIC PROGRAM**

	Have a Job						Graduate School					
	Yes		No		NA		Yes		No		NA	
	N	%	N	%	N	%	N	%	N	%	N	%
School of Public Affairs	15	33.33%	2	4.44%	27	60.00%	9	20.45%	10	22.73%	25	56.82%
Communications / Mass Media	0	0.00%	0	0.00%	5	100.00%	0	0.00%	0	0.00%	5	100.00%
Government Studies	2	66.67%	0	0.00%	0	0.00%	0	0.00%	2	66.67%	0	0.00%
Justice Studies	0	0.00%	0	0.00%	11	100.00%	0	0.00%	0	0.00%	11	100.00%
Master's in Justice Administration	0	0.00%	0	0.00%	2	100.00%	0	0.00%	0	0.00%	2	100.00%
Occupational Environmental Management	0	0.00%	0	0.00%	4	100.00%	0	0.00%	0	0.00%	4	100.00%
Organizational Communication and Leadership	0	0.00%	0	0.00%	0	0.00%	0	0.00%	0	0.00%	0	0.00%
Paralegal Studies	2	33.33%	2	33.33%	2	33.33%	3	50.00%	1	16.67%	2	33.33%
Political Science	5	100.00%	0	0.00%	0	0.00%	0	0.00%	5	100.00%	0	0.00%
Social Work	6	66.67%	0	0.00%	3	33.33%	6	66.67%	2	22.22%	1	11.11%
Licensure in School Social Work	5	71.43%	0	0.00%	2	28.57%	4	0.00%	2	0.00%	1	0.00%
No Concentration	1	50.00%	0	0.00%	1	50.00%	2	100.00%	0	0.00%	0	0.00%
Overall	115	33.05%	2	0.57%	231	66.38%	16	4.60%	33	9.48%	299	85.92%

FINANCIAL



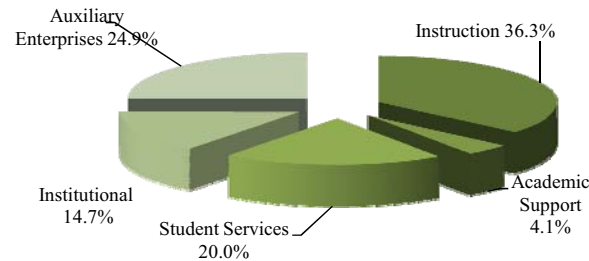
METHODIST UNIVERSITY BUDGET 2009-2010

	Amount	Percentage
INCOME		
Educational and General	\$ 40,427,671	81.49%
Auxiliary Enterprises	9,181,690	18.51%
Sales of Capital Equipment	2,000	0.00%
Total Income	\$ 49,611,361	100.00%
EXPENSES		
General Administration	\$ 21,384	0.04%
Contingencies	603,657	1.22%
Planning and Evaluation	21,107	0.04%
General Academic	1,575,423	3.18%
Business Affairs	9,940,440	20.04%
Student Services	765,993	1.54%
Institutional Advancement	191,281	0.39%
Financial Aid/Admissions	13,676,069	27.57%
Church and Community Relations	201,865	0.41%
Athletics	630,470	1.27%
Salaries and Benefits	20,870,210	42.07%
Capital Expenditures	1,110,684	2.24%
Total Expenditures	\$ 49,608,583	100.00%
Surplus	\$ 2,778	0.01%
Total Expenditures and Surplus	\$ 49,611,361	100.00%

Function	Fiscal Year												
	09-10	08-09	07-08	06-07	05-06	04-05	03-04	02-03	01-02	00-01	99-00	98-99	97-98
Instruction	13,604,030	13,306,949	12,485,503	11,958,559	11,131,851	10,283,561	9,252,597	9,408,571	8,764,471	8,014,145	7,518,063	6,911,735	6,387,049
Academic Support	1,535,754	1,544,452	1,322,348	1,110,971	1,172,410	1,110,292	1,030,439	1,054,638	978,334	933,686	945,581	680,940	642,280
Student Services	7,508,066	7,322,694	6,663,693	5,969,367	5,313,078	4,795,688	4,549,005	4,615,784	4,645,717	4,277,783	4,051,283	3,838,184	3,864,946
Student Aid	-	-	-	2,858,866	2,651,832	2,539,049	2,347,175	2,332,867	2,416,950	2,067,651	1,797,068	1,493,605	1,160,169
Institutional	5,501,900	5,477,600	6,354,764	6,015,586	5,504,952	5,280,641	4,860,583	4,922,809	4,619,326	4,131,748	3,880,076	3,488,043	2,878,821
Auxiliary Enterprises	9,343,066	8,400,753	7,891,096	6,422,171	5,516,185	5,409,390	5,141,222	5,064,037	4,716,964	4,459,330	3,937,146	3,781,732	3,452,327
Total	37,492,816	36,052,448	34,717,404	34,335,520	31,290,308	29,418,621	27,181,021	27,398,706	26,141,762	23,884,343	22,129,217	20,194,239	18,385,592

Function	Fiscal Year												
	09-10	08-09	07-08	06-07	05-06	04-05	03-04	02-03	01-02	00-01	99-00	98-99	97-98
Instruction	36.3%	36.9%	36.0%	34.8%	35.6%	35.0%	34.0%	34.3%	33.5%	33.6%	34.0%	34.2%	34.7%
Academic Support	4.1%	4.3%	3.8%	3.2%	3.7%	3.8%	3.8%	3.8%	3.7%	3.9%	4.3%	3.4%	3.5%
Student Services	20.0%	20.3%	19.2%	17.4%	17.0%	16.3%	16.7%	16.8%	17.8%	17.9%	18.3%	19.0%	21.0%
Institutional	14.7%	15.2%	18.3%	17.5%	17.6%	17.9%	17.9%	18.0%	17.7%	17.3%	17.5%	17.3%	15.7%
Auxiliary Enterprises	24.9%	23.3%	22.7%	18.7%	17.6%	18.4%	18.9%	18.5%	18.0%	18.7%	17.8%	18.7%	18.8%
Student Aid	0.0%	0.0%	0.0%	8.3%	8.5%	8.6%	8.6%	8.5%	9.2%	8.7%	8.1%	7.4%	6.3%

**DISTRIBUTION OF EXPENDITURES BY
FUNCTION
FISCAL YEAR 2009-10**



THE METHODIST UNIVERSITY, INC.
Consolidated Statements of Activities
For the year ended June 30, 2010

	2010			Total
	Unrestricted Net Assets	Temporarily Restricted Net Assets	Permanently Restricted Net Assets	
<u>Revenues, gains, and other support</u>				
Tuition and fees	\$ 38,094,149	\$ -	\$ -	\$ 38,094,149
Less sponsored scholarship allowances	(13,613,407)	-	-	(13,613,407)
Net tuition and fees	24,480,742	-	-	24,480,742
Government contracts and grants	2,338,247	-	-	2,338,247
Contributions and private grants	166,449	1,845,798	71,944	2,084,191
Investment income on endowment	240,967	51,580	13,909	306,456
Other investment income	34,416	17,164	-	51,580
Net realized gains (losses) on investments	40,256	9,555	-	49,811
Unrealized gains (losses) on investments	895,439	64,375	-	959,814
Unrealized gain/(loss) on interest rate swap agreement	(328,904)	-	-	(328,904)
Gain (loss) on sale of fixed assets	(7,671)	-	-	(7,671)
Change in value of split-interest agreements	-	(5,361)	-	(5,361)
Other income	983,867	-	-	983,867
Sales and services of auxiliary enterprises	9,886,466	-	-	9,886,466
Total revenues and gains	38,730,274	1,983,111	85,853	40,799,238
Net assets released from restrictions	3,174,570	(3,174,570)	-	-
Reclassification of net assets	53,055	(90,476)	37,421	-
Total revenues, gains, and other support	41,957,899	(1,281,935)	123,274	40,799,238
<u>Expenses</u>				
Educational and general				
Instruction	13,604,030	-	-	13,604,030
Library	1,535,754	-	-	1,535,754
Student services	7,508,066	-	-	7,508,066
Institutional support	5,501,900	-	-	5,501,900
Total educational and general	28,149,750	-	-	28,149,750
Auxiliary enterprises	9,343,066	-	-	9,343,066
Total expenses	37,492,816	-	-	37,492,816
Increase (decrease) in net assets	4,465,083	(1,281,935)	123,274	3,306,422
Net assets at beginning of year	26,340,860	5,274,541	7,447,939	39,063,340
Net assets at end of year	\$ 30,805,943	\$ 3,992,606	\$ 7,571,213	\$ 42,369,762

FACULTY & STAFF



**METHODIST UNIVERSITY
EMPLOYEES BY ASSIGNED POSITION
ACADEMIC YEAR 2006-2007 - 2010-2011**

OVERALL

Occupational Classification	2006-2007		2007-2008		2008-2009		2009-2010		2010-2011		1-Year % Change	5-Year % Change
	N	%	N	%	N	%	N	%	N	%		
Executive/Administrative												
Managerial	44	8.98%	44	8.71%	42	8.38%	39	7.74%	41	7.90%	5.13%	-6.82%
Faculty	212	43.27%	219	43.37%	213	42.51%	206	40.87%	214	41.23%	3.88%	0.94%
Other Professionals	117	23.88%	114	22.57%	122	24.35%	152	30.16%	149	28.71%	-1.97%	27.35%
Clerical and Secretarial	45	9.18%	45	8.91%	40	7.98%	39	7.74%	34	6.55%	-12.82%	-24.44%
Technical and Paraprofessional	5	1.02%	9	1.78%	9	1.80%	7	1.39%	8	1.54%	14.29%	60.00%
Skilled Crafts	5	1.02%	5	0.99%	5	1.00%	3	0.60%	4	0.77%	33.33%	-20.00%
Service/Maintenance	62	12.65%	69	13.66%	70	13.97%	58	11.51%	69	13.29%	18.97%	11.29%
Grand Total	490	100.00%	505	100.00%	501	100.00%	504	100.00%	519	100.00%	2.98%	5.92%

**METHODIST UNIVERSITY
EMPLOYEES BY ASSIGNED POSITION
ACADEMIC YEAR 2006-2007 - 2010-2011**

FULL-TIME

Occupational Classification	2006-2007		2007-2008		2008-2009		2009-2010		2010-2011		1-Year % Change	5-Year % Change
	N	%	N	%	N	%	N	%	N	%		
Executive/Administrative												
Managerial	43	12.36%	43	11.85%	41	11.26%	38	10.41%	40	10.23%	5.26%	-6.98%
Faculty	117	33.62%	127	34.99%	127	34.89%	128	35.07%	139	35.55%	8.59%	18.80%
Other Professionals	99	28.45%	93	25.62%	99	27.20%	117	32.05%	121	30.95%	3.42%	22.22%
Clerical and Secretarial	28	8.05%	33	9.09%	28	7.69%	26	7.12%	28	7.16%	7.69%	0.00%
Technical and Paraprofessional	5	1.44%	3	0.83%	4	1.10%	2	0.55%	2	0.51%	0.00%	-60.00%
Skilled Crafts	5	1.44%	5	1.38%	5	1.37%	3	0.82%	3	0.77%	0.00%	-40.00%
Service/Maintenance	51	14.66%	59	16.25%	60	16.48%	51	13.97%	58	14.83%	13.73%	13.73%
Grand Total	348	100.00%	363	100.00%	364	100.00%	365	100.00%	391	100.00%	7.12%	12.36%

PART-TIME

Occupational Classification	2006-2007		2007-2008		2008-2009		2009-2010		2010-2011		1-Year % Change	5-Year % Change
	N	%	N	%	N	%	N	%	N	%		
Executive/Administrative												
Managerial	1	0.70%	1	0.70%	1	0.73%	1	0.72%	1	0.78%	0.00%	0.00%
Faculty	95	66.90%	92	64.79%	86	62.77%	78	56.12%	75	58.59%	-3.85%	-21.05%
Other Professionals	18	12.68%	21	14.79%	23	16.79%	35	25.18%	28	21.88%	-20.00%	55.56%
Clerical and Secretarial	17	11.97%	12	8.45%	12	8.76%	13	9.35%	6	4.69%	-53.85%	-64.71%
Technical and Paraprofessional	0	0.00%	6	4.23%	5	3.65%	5	3.60%	6	4.69%	20.00%	100.00%
Skilled Crafts	0	0.00%	0	0.00%	0	0.00%	0	0.00%	1	0.78%	100.00%	100.00%
Service/Maintenance	11	7.75%	10	7.04%	10	7.30%	7	5.04%	11	8.59%	57.14%	0.00%
Grand Total	142	100.00%	142	100.00%	137	100.00%	139	100.00%	128	100.00%	-7.91%	-9.86%

**FALL 2010 UNIVERSITY EMPLOYEES
BY OCCUPATIONAL CLASSIFICATION**

Occupational Classification	Exec/Admin/Manager		Faculty		Other Professional		Clerical Secretarial		Technical Paraprof.		Skilled Crafts		Service Maintenance		Overall	
	N	%	N	%	N	%	N	%	N	%	N	%	N	%	N	%
American Indian	0	0.00%	4	0.77%	0	0.00%	0	0.00%	0	0.00%	0	0.00%	0	0.00%	4	0.77%
Female	0	0.00%	2	0.39%	0	0.00%	0	0.00%	0	0.00%	0	0.00%	0	0.00%	2	0.39%
Male	0	0.00%	2	0.39%	0	0.00%	0	0.00%	0	0.00%	0	0.00%	0	0.00%	2	0.39%
African American	4	0.77%	16	3.08%	36	6.94%	7	1.35%	0	0.00%	1	0.19%	23	4.43%	87	16.76%
Female	1	0.19%	11	2.12%	16	3.08%	6	1.16%	0	0.00%	0	0.00%	7	1.35%	41	7.90%
Male	3	0.58%	5	0.96%	20	3.85%	1	0.19%	0	0.00%	1	0.19%	16	3.08%	46	8.86%
Asian	1	0.19%	9	1.73%	2	0.39%	0	0.00%	0	0.00%	0	0.00%	2	0.39%	14	2.70%
Female	1	0.19%	2	0.39%	0	0.00%	0	0.00%	0	0.00%	0	0.00%	0	0.00%	3	0.58%
Male	0	0.00%	7	1.35%	2	0.39%	0	0.00%	0	0.00%	0	0.00%	2	0.39%	11	2.12%
Pacific Islander*	0	0.00%	0	0.00%	0	0.00%	0	0.00%	0	0.00%	0	0.00%	0	0.00%	0	0.00%
Female	0	0.00%	0	0.00%	0	0.00%	0	0.00%	0	0.00%	0	0.00%	0	0.00%	0	0.00%
Male	0	0.00%	0	0.00%	0	0.00%	0	0.00%	0	0.00%	0	0.00%	0	0.00%	0	0.00%
Hispanic	1	0.19%	5	0.96%	0	0.00%	1	0.19%	0	0.00%	1	0.19%	2	0.39%	10	1.93%
Female	1	0.19%	4	0.77%	0	0.00%	1	0.19%	0	0.00%	0	0.00%	1	0.19%	7	1.35%
Male	0	0.00%	1	0.19%	0	0.00%	0	0.00%	0	0.00%	1	0.19%	1	0.19%	3	0.58%
American Caucasian	35	6.74%	169	32.56%	108	20.81%	26	5.01%	8	1.54%	2	0.39%	39	7.51%	387	74.57%
Female	13	2.50%	75	14.45%	63	12.14%	21	4.05%	4	0.77%	0	0.00%	5	0.96%	181	34.87%
Male	22	4.24%	94	18.11%	45	8.67%	5	0.96%	4	0.77%	2	0.39%	34	6.55%	206	39.69%
International	0	0.00%	3	0.58%	2	0.39%	0	0.00%	0	0.00%	0	0.00%	0	0.00%	5	0.96%
Female	0	0.00%	1	0.19%	1	0.19%	0	0.00%	0	0.00%	0	0.00%	0	0.00%	2	0.39%
Male	0	0.00%	2	0.39%	1	0.19%	0	0.00%	0	0.00%	0	0.00%	0	0.00%	3	0.58%
Multi-Racial**	0	0.00%	3	0.58%	0	0.00%	0	0.00%	0	0.00%	0	0.00%	0	0.00%	3	0.58%
Female	0	0.00%	3	0.58%	0	0.00%	0	0.00%	0	0.00%	0	0.00%	0	0.00%	3	0.58%
Male	0	0.00%	0	0.00%	0	0.00%	0	0.00%	0	0.00%	0	0.00%	0	0.00%	0	0.00%
Unknown	0	0.00%	5	0.96%	1	0.19%	0	0.00%	0	0.00%	0	0.00%	3	0.58%	9	1.73%
Female	0	0.00%	4	0.77%	1	0.19%	0	0.00%	0	0.00%	0	0.00%	1	0.19%	6	1.16%
Male	0	0.00%	1	0.19%	0	0.00%	0	0.00%	0	0.00%	0	0.00%	2	0.39%	3	0.58%
Overall	41	7.90%	214	41.23%	149	28.71%	34	6.55%	8	1.54%	4	0.77%	69	13.29%	519	100.00%
Female	16	3.08%	102	19.65%	81	15.61%	28	5.39%	4	0.77%	0	0.00%	14	2.70%	245	47.21%
Male	25	4.82%	112	21.58%	68	13.10%	6	1.16%	4	0.77%	4	0.77%	55	10.60%	274	52.79%

FULL-TIME FACULTY BY RANK, GENDER, AND DEGREE
FALL 2006- FALL 2010

	2006		2007		2008		2009		2010		1-Year % Change	5-Year % Change
	N	%	N	%	N	%	N	%	N	%		
Professor	39	33.33%	36	28.57%	36	28.35%	35	27.34%	35	25.18%	0.00%	-10.26%
<i>Men</i>	25	21.37%	24	19.05%	21	16.54%	21	16.41%	22	15.83%	4.76%	-12.00%
Master's Degree	1	0.85%	2	1.59%	1	0.79%	1	0.78%	1	0.72%	0.00%	0.00%
First Professional Degree	1	0.85%	1	0.79%	0	0.00%	0	0.00%	0	0.00%	0.00%	-100.00%
Doctorate	23	19.66%	21	16.67%	20	15.75%	20	15.63%	21	15.11%	5.00%	-8.70%
<i>Women</i>	14	11.97%	12	9.52%	15	11.81%	14	10.94%	13	9.35%	-7.14%	-7.14%
Master's Degree	3	2.56%	2	1.59%	4	3.15%	4	3.13%	4	2.88%	0.00%	33.33%
First Professional Degree	1	0.85%	0	0.00%	0	0.00%	0	0.00%	0	0.00%	0.00%	-100.00%
Doctorate	10	8.55%	10	7.94%	11	8.66%	10	7.81%	9	6.47%	-10.00%	-10.00%
Associate Professor	36	30.77%	29	23.02%	31	24.41%	30	23.44%	31	22.30%	3.33%	-13.89%
<i>Men</i>	18	15.38%	13	10.32%	17	13.39%	15	11.72%	15	10.79%	0.00%	-16.67%
Master's Degree	6	5.13%	4	3.17%	5	3.94%	5	3.91%	4	2.88%	-20.00%	-33.33%
First Professional Degree	0	0.00%	0	0.00%	0	0.00%	0	0.00%	0	0.00%	0.00%	0.00%
Doctorate	12	10.26%	9	7.14%	12	9.45%	10	7.81%	11	7.91%	10.00%	-8.33%
<i>Women</i>	18	15.38%	16	12.70%	14	11.02%	15	11.72%	16	11.51%	6.67%	-11.11%
Master's Degree	6	5.13%	9	7.14%	5	3.94%	6	4.69%	7	5.04%	16.67%	16.67%
First Professional Degree	0	0.00%	1	0.79%	0	0.00%	0	0.00%	0	0.00%	0.00%	0.00%
Doctorate	12	10.26%	6	4.76%	9	7.09%	9	7.03%	9	6.47%	0.00%	-25.00%
Assistant Professor	29	24.79%	39	30.95%	38	29.92%	42	32.81%	47	33.81%	11.90%	62.07%
<i>Men</i>	15	12.82%	19	15.08%	19	14.96%	24	18.75%	25	17.99%	4.17%	66.67%
Master's Degree	7	5.98%	8	6.35%	12	9.45%	12	9.38%	12	8.63%	0.00%	71.43%
First Professional Degree	1	0.85%	1	0.79%	0	0.00%	0	0.00%	0	0.00%	0.00%	-100.00%
Doctorate	7	5.98%	10	7.94%	7	5.51%	12	9.38%	13	9.35%	8.33%	85.71%
<i>Women</i>	14	11.97%	20	15.87%	19	14.96%	18	14.06%	22	15.83%	22.22%	57.14%
Master's Degree	10	8.55%	10	7.94%	11	8.66%	9	7.03%	7	5.04%	-22.22%	-30.00%
First Professional Degree	0	0.00%	0	0.00%	1	0.79%	1	0.78%	1	0.72%	0.00%	100.00%
Doctorate	4	3.42%	10	7.94%	7	5.51%	8	6.25%	14	10.07%	75.00%	250.00%
Instructor	13	11.11%	22	17.46%	22	17.32%	21	16.41%	26	18.71%	23.81%	100.00%
<i>Men</i>	5	4.27%	8	6.35%	8	6.30%	10	7.81%	11	7.91%	10.00%	120.00%
Bachelor's Degree	1	0.85%	2	1.59%	1	0.79%	1	0.78%	2	1.44%	100.00%	100.00%
Master's Degree	4	3.42%	5	3.97%	6	4.72%	8	6.25%	8	5.76%	0.00%	100.00%
First Professional Degree	0	0.00%	0	0.00%	0	0.00%	0	0.00%	0	0.00%	0.00%	0.00%
Doctorate	0	0.00%	1	0.79%	1	0.79%	1	0.78%	1	0.72%	0.00%	100.00%
<i>Women</i>	8	6.84%	14	11.11%	14	11.02%	11	8.59%	15	10.79%	36.36%	87.50%
Bachelor's Degree	0	0.00%	1	0.79%	1	0.79%	0	0.00%	0	0.00%	0.00%	0.00%
Master's Degree	8	6.84%	13	10.32%	13	10.24%	11	8.59%	15	10.79%	36.36%	87.50%
First Professional Degree	0	0.00%	0	0.00%	0	0.00%	0	0.00%	0	0.00%	0.00%	0.00%
Doctorate	0	0.00%	0	0.00%	0	0.00%	0	0.00%	0	0.00%	0.00%	0.00%
Total	117		126		127		128		139		8.59%	18.80%

DEVELOPMENT & ALUMNI AFFAIRS



OFFICE OF DEVELOPMENT AND ALUMNI AFFAIRS

The Office of Development and Alumni Affairs has a variety of roles at Methodist University:

- The office is responsible for all external fundraising for the University. This includes the annual fund, capital needs, endowed scholarships, planned/estate gifts, campaigns, federal appropriations and other projects as needed.
- Alumni relations maintains communication and relationships with graduates/former students, and is responsible for planning all alumni events, including Homecoming Weekend, editing the alumni section of the University's web site, maintaining the online alumni directory, coordinating the annual alumni fund drive, and providing affinity programs.
- All charitable gifts made to Methodist University must be processed through the Gifts Records Coordinator in the Development Office.
- The Development Office is the University's clearinghouse for grants. The Director of Grants & Research is available to assist in research funding sources and grant opportunities for all campus entities.
- There are 155 endowed and annual scholarships currently available for students. Contact the Office of Financial Aid for criteria, amounts, etc.

ALUMNI

- As of May 14, 2011, Methodist University has graduated 10,088 students.
- Methodist University has alumni from all fifty states, the District of Columbia, Puerto Rico, and the Virgin Islands. We also have 150 Alumni who live outside the United States.
- The top six states for Methodist University alumni are: North Carolina (6,776), Florida (832), Virginia (778), South Carolina (410), Georgia (359), and Texas (352).
- In addition to maintaining information on Alumni, the Alumni Office maintains biographical information on approximately 4,379 former students of the MU (non-graduates).
- Faculty and staff are encouraged to update us whenever they receive information on alumni or former students. Maintaining an accurate database is vital to our success in connecting with alumni.
- In 2007, the Alumni Office established Monarch Connections, an online community exclusively for alumni, faculty and staff. All Methodist University Faculty and those Staff who work closely with students are encouraged to log in to **Monarch Connections**, located on the Alumni page of the website. You can look up a former student's address, phone, and e-mail and correspond with them, and view their Class Notes and Mentor Profiles. You can also search our alumni by class year, state, and other criteria. Monarch Connections is offered at no charge in a secure, password-protected environment. To set up your account, log on or call Lauren Wike at ext. 7167.
- The Alumni Office sends out a newsletter to our alumni on a monthly basis. If you have information that you wish to share with our alumni or if you simply want to make them aware of an upcoming event, please let us know and we will add it to the newsletter.
- The Alumni Office is interested in knowing about and assisting with Alumni gatherings, whether it is related to academics, athletics or simply social. Please contact Lauren Wike at ext. 7167.

- The alumni speaker series brings our alumni back on the campus to speak to your class or club about their experiences or occupation. It is an opportunity for our alumni to give back to Methodist University. If you are interested in having alum speak to your class please contact Lauren Wike at ext. 7167.
- For mailings and other activities, we can provide address information, segmented if necessary. A list can be e-mailed to you in any format you desire. Please e-mail Krista Lee at klee@methodist.edu.
- Important Alumni Numbers: 9 of our Alums are also Board of Trustee members. 34 of our alums are also faculty members. 77 of our alums are also staff members.

ANNUAL FUND

- The Annual Fund supplements scholarships and the operating budget of the University.
- The Foundation Board, made up of community volunteers, is responsible for Loyalty Day, the largest annual fundraiser for Methodist University among businesses and friends in Cumberland County as well as all faculty, staff, and alumni. This drive takes place on the second Tuesday in February each year and all proceeds benefit student scholarships.
- The NC Conference of the United Methodist Church is currently the largest contributor to the Annual Fund.

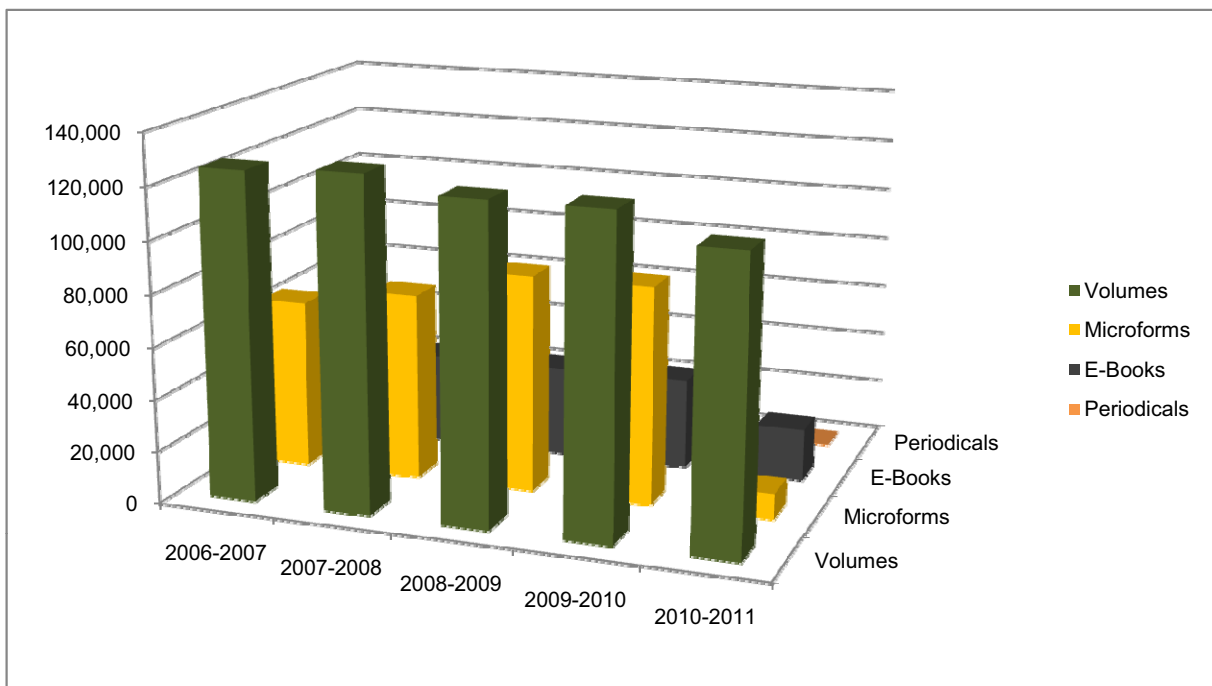
Annual Giving 2006-2010 (Includes all gifts to Methodist University) January - December					
Constituency	2006	2007	2008	2009	2010
Alumni & Current/Former Students	\$88,371	\$221,773	\$133,541	\$97,030.00	\$210,060
Board of Trustees (Current & Former)	\$158,398	\$360,283	\$158,374	\$399,013.00	\$339,574
Churches		8,375	\$9,620	\$7,905	\$7,375
Corporations & Organizations	\$135,818	\$188,210	\$424,824	\$890,647.00	\$641,639
Faculty & Staff (Current & Former)	\$37,982	\$62,027	\$31,872	\$43,315.00	\$67,528
Foundations	\$860,414	\$696,359	\$378,699	\$1,960,254.00	\$313,084
Friends	\$2,366,936	\$1,516,669	\$1,760,702	\$155,677.00	\$671,747
NC Independent Colleges & Universities	\$44,028	\$52,654	\$48,663	\$29,370.00	\$52,622
NC Conference United Methodist Church	\$136,174	\$138,851	\$89,225	\$145,914.00	\$75,681
Parents (Current & Former)	\$24,875	\$22,890	\$22,992	\$21,218.00	\$47,097
Other Grants & Appropriations	\$500,000.00				
TOTAL	\$4,352,996	\$3,268,091	\$3,058,512	\$3,750,343	\$2,426,407

ADDITIONAL INFORMATION



ACADEMIC LIBRARY RESOURCES

	2006-2007	2007-2008	2008-2009	2009-2010	2010-2011
Volumes	125,573	127,561	121,458	121,458	110,976
Microforms	65,000	72,000	83,453	83,453	10,000
E-Books	0	35,000	35,000	35,000	20,245
Periodicals	236	241	385	385	210



LIBRARY HIGHLIGHTS

- 42" Plasma Screen for Student Usage
- 14 Laptops and Flash Drives available for Students
- Wireless Access throughout
- Individual Research Assistance from Librarians
- 56 Computer Workstations with newest Microsoft Office Software
- Group and Individual Study Room
- Digital Microform Machine
- Multimedia Area with Specialized Software and Scanners
- Open 7 days a weeks, 89.5 hours

Did you know Methodist University Athletics...

- ... offers 19 intercollegiate varsity sports with the addition of women's lacrosse in the fall of 2001?
- ... has totaled 65 national championships (33 team and 32 individual) in only 46 years of intercollegiate athletics?
- ... has finished in the top 15 percent out of over 400 NCAA Division III member institutions in the United States Sports Academy Directors' Cup which recognizes the nation's most outstanding overall athletic program?
- ... has amassed more than 280 All-Americans and 40 Academic All-Americans?
- ... has won 10 of the last 30 USA South Athletic Conference Presidents' Cups which honor the conference's most outstanding men's and women's athletic programs?
- ... has had more than 1,400 student-athletes earn All-Conference honors?
- ... have totaled eight NCAA Division III runner-up finishes in men's and women's golf, baseball, and men's and women's soccer, plus "Final Four" and "Elite Eight" appearances in baseball, men's basketball, and men's and women's soccer?
- ... has won 122 conference championships?

2009-10 Inside the Numbers

- 1... NCAA Division III Individual National Champion
- 1... USA South Athletic Conference Team Regular Season Championship
- 2... NCAA Division III Team National Championships
- 2... USA South Athletic Conference Coach of the Year honors
- 2... USA South Athletic Conference Tournament Most Valuable Players
- 2... USA South Athletic Conference Team Tournament Championships
- 3... USA South Athletic Conference Player of the Year honors
- 5... NCAA Division III National Tournament appearances
- 11... NCAA Division III All-Region athletes
- 13... NCAA Division III All-American athletes
- 61... USA South Athletic All-Conference athletes
- 104... USA South Academic All-Conference athletes
- Second place in the USA South Athletic Conference Presidents Cup Overall Standings

