

UNIVERSITY PARENT  
**GUIDE**



**2010**

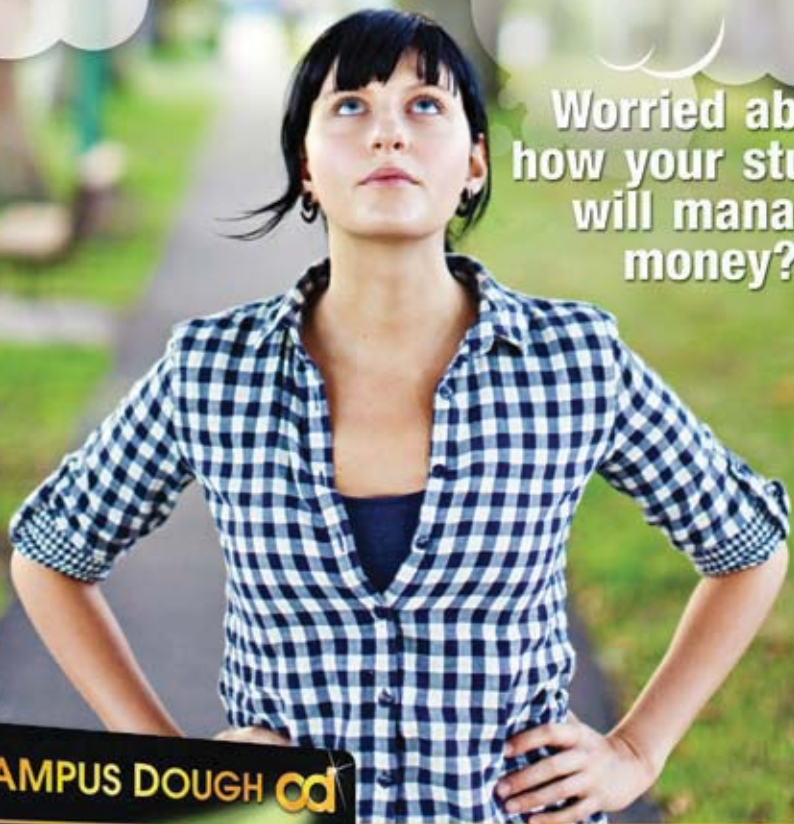
**Methodist University**

---

CAMPUS RESOURCES – LOCAL INSIGHT – HELPFUL INFORMATION



Worried about  
how your student  
will manage  
money?



Check out the  
**CAMPUS DOUGH CARD!**

The Best Way for Students to  
Manage & Save Money.

[www.campusdough.com](http://www.campusdough.com)



## TABLE OF CONTENTS

### 4 | Methodist Guide

Comprehensive advice, information for campus success

- 4 | President's Welcome
- 5 | Brief History of Methodist University
- 6 | Academics
- 7 | Health Services
- 8 | Housing
- 9 | Campus Resources, Organizations and Activities
- 10 | Financial Aid

### 11 | Resources

Must-have knowledge to navigate your way

- 11 | 2010-2011 Academic Calendar
- 12 | Helpful Phone Numbers
- 14 | Campus Map

## Contact

Katrina Stanley-Blue  
Methodist University  
5400 Ramsey Street  
Fayetteville, NC 28311  
(910) 630-7335  
[www.methodist.edu/parents/index.htm](http://www.methodist.edu/parents/index.htm)

## Featured Sponsors

**ACCOMMODATIONS**  
**Comfort Inn Fort Bragg - Fayetteville**  
Please see ad on p. 13.

**AUTOMOTIVE**  
**Black's Tire & Auto Services**  
Please see ad on p. 12.

**BANKING & FINANCIAL**  
**Campus Dough**  
Please see ad on facing page.

**Capital Bank**  
Please see ad on p. 10.

**Woodforest National Bank**  
Please see ad on p. 9.

The presence of Methodist University logos and marks in this Guide does not mean Methodist University endorses the products or services offered by advertisers in this Guide. ©2010 University Parent Magazines, Inc. To be featured in the guide, please contact University Parent Media Sales at (866) 721-1357, or send an e-mail to [ask@universityparent.com](mailto:ask@universityparent.com).

The Campus Dough DebitSmart Visa® Prepaid Card is issued by MetaBank™ pursuant to a license from Visa U.S.A. Inc. The USA PATRIOT Act is a Federal law that requires all financial institutions to obtain, verify, and record information that identifies each person who opens an account. You will be asked to provide your name, address, date of birth, and other information that will allow us to identify you. You may also be asked to provide documentation as proof of identification. "100% approval guaranteed" and "Everyone Qualifies" is contingent upon successfully passing the mandatory identification confirmation.

# President's Welcome

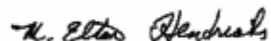
## Dear Visitors,

It is always a pleasure welcoming parents to our campus. This is a community of many people—students, faculty, staff, administrators—who live, study and work together. This process of sharing our lives together offers the opportunity for each of us to be better, wiser, stronger, and more productive than we would be alone.

In order for the maximum benefit of our life together to be realized and for the truest sense of community to be achieved, there must be a commitment from all members to “make it work.” We are committed to making Methodist University a good community, and hope you enjoy your visit with us.

I look forward with pleasure to your visiting our campus in person, and working, studying, and growing with you.

## Sincerely,



M. Elton Hendricks ■



# Brief History of Methodist University

## History

Chartered November 1, 1956 as a senior, coeducational liberal arts college, Methodist College was established as a joint venture by the citizens of Fayetteville/Cumberland County and the North Carolina Conference of the United Methodist Church. Methodist College opened to students in the fall of 1960. In the fall of 2006, in conjunction with the institution's 50th anniversary celebration, Methodist College officially became Methodist University.

## Campus

The 617-acre campus includes 36 buildings, an 18 hole golf course, football/track facility, baseball and softball fields, tennis courts, outdoor volleyball and basketball courts, and an amphitheater.

## Community

The city of Fayetteville is North Carolina's fourth largest metropolitan area and is home to over 250,000 people, arena

league football, minor league hockey and baseball teams, and numerous cultural and entertainment facilities.

## Enrollment

The University today serves approximately 2,300 students—1,700 in the day program and 600 in Methodist University at Night, the University's evening and weekend program. The student/faculty ratio is 15:1. Average class size is around 20 students. The student body includes persons of diverse ages and nationalities, representing 48 states and 42 foreign countries. Approximately 40% of our students come from out of state. Over \$10 million of institutional scholarships and grants were awarded to our students last year.

## Alumni

Since 1964, the University has graduated 9,500 students. Alumni have excelled in many ways; they have earned graduate degrees, advanced professionally, started their own businesses, and become leaders in their chosen fields and communities. ■

# Academics

As you browse through the offerings of the five schools housing our academic departments, you will find a wide variety of majors, minors, concentrations, and special programs. But Methodist University is not just a “department store” of academic programs. Within each of our schools and departments you will find the unifying themes of critical thinking, character development, personal exploration, career enhancement, and lifelong learning.

Our fully accredited undergraduate programs are designed to marry the strongest features of a traditional liberal arts core with the modern realities of immediate career goals and graduate school preparation. Please visit one or more of the links found within the four undergraduate schools at [www.methodist.edu/academics/schools\\_departments.htm](http://www.methodist.edu/academics/schools_departments.htm) ■

Bachelor of Arts	B.A.
Bachelor of Science	B.S.
Bachelor of Science in Nursing	B.S.N.
Bachelor of Social Work	B.S.W.
Bachelor of Music	B.M.
Bachelor of Fine Arts	B.F.A.
Master of Business Administration	M.B.A.
Master of Justice Administration	M.J.A.
Master of Medical Science	M.M.S.
Associate of Arts	A.A.
Associate of Science	A.S.



# Health Services

Health services are provided to students by a physician assistant (P.A.) and by a registered nurse. Services are available during clinic hours and on call when necessary. The staff of Student Health Services provides presentations to the university community on a variety of wellness issues. The Health Center is located in West Hall and is open on a regular basis during the school year.

Students are encouraged to use Methodist University’s cost effective health services. Nursing services are available to students at no cost. A facilities utilization fee will be charged for visits to the physician assistant. The physician assistant is available on a limited basis. His hours are posted in the Health Center. An appointment is necessary to see the P.A. There is a Women’s Wellness clinic on Tuesday nights.

A flu clinic will be held in October. Plan to get your flu shot for a minimal charge at the Health Center.

We believe good health is essential to optimal success in college. Student health services provides treatment for acute illnesses, preventive health services, and health education.



## General Health Services

- Diagnosis and treatment of common medical illnesses, including colds, sore throats, ear aches, stomach upsets, and injuries.
- Referrals to specialist and/or clinics and hospitals as needed.
- Laboratory facilities are available for routine urine, strep, and pregnancy tests.
- Injections are given by the nurse. They include allergy shots, flu vaccine, and Dep shots.
- Sexual health for women in a special Women’s Wellness clinic on Tuesday nights by appointment only.
- Medications (OTC) are available for the students at no charge.
- Transportation needs are the responsibility of the student.
- Health education: Promotion of health and wellness and prevention are emphasized.

## Emergency Services

Emergency medical care is available 24 hours a day at Cape Fear Valley Medical Center, a few miles from our campus. There are two convenient care centers, Urgent Care and Express Care, near our campus for treatment of less urgent medical care when the Health Center is closed. The student is responsible for charges incurred at off-campus medical facilities. ■

### Office Hours

8:00 a.m. - 5:00 p.m. Monday,  
Wednesday & Thursday  
8:00 a.m. - 1:00 p.m. Tuesday & Friday  
5:00 p.m. - 8:00 p.m. Tuesday evening

### Telephone

(910) 630-7164  
(910) 630-7544 (Fax)



## Housing

We have found – and no doubt you will – value from the unique experiences that residence hall living provides. Our staff recognizes that residence hall living is an integral part of the educational process.

Whether you live in a traditional hall or suite, our commitment is to provide you with a healthy, clean and safe environment.

One of the major purposes of the Department of Student Development and Services is to aid students in making their time at Methodist a valuable developmental experience. As a result, it is the policy of the University that all freshman and sophomores must live in University operated residence halls for their first two years unless they are local residents.

Our residence hall staff is here to provide information, counseling and programming for residents. By choosing to live in the residence you will be at the center of campus activity, close to classes and dining facilities, and right in the midst of many social activities!

**Living on campus is convenient, affordable, and fun!**

Methodist offers a variety of housing options, including:

- two-person rooms with common floor bathrooms (Cumberland and Sanford Hall)
- two-person suites that share a bathroom (Garber, Weaver, Pearce, West)
- two-bedroom apartments that share a common bathroom (Pines Apartments)
- four-bedroom apartments that share two bathrooms (Cape Fear Commons Apartments)
- four-bedroom apartments where each bedroom has a bathroom (McLean Complex)

Most first year Methodist students live in rooms or suites; apartments are primarily reserved for upperclassmen. ■

## Campus Resources, Organizations and Activities

A student club or organization is defined as any group of students who organize themselves around a common purpose and are not otherwise funded through the college budget. The organizations focus on academics as well as entertainment. Chapters of national academic honor societies have been founded at Methodist to recognize student achievement in particular areas of study.

Methodist University is proud of its many diverse organizations that it has to offer to the student community. Participation allows students to further develop their leadership skills and enhance social growth to complement their academic life. Clubs and organizations are open to all students and participation is encouraged. Honor societies will invite students who meet their requirements to be inducted. Student organizations are each governed by a constitution, supervised by a faculty advisor and have a purpose compatible with that of the mission of the University. ■



**WOODFOREST**  
Banking your way...EVERY DAY AND NIGHT!

WE ARE OPEN 7 DAYS A WEEK,  
364 DAYS A YEAR

INSIDE YOUR LOCAL WALMART

4601 RAMSEY STREET  
FAYETTEVILLE, NC 28311  
(981) 488-3498 - [www.woodforest.com](http://www.woodforest.com)





# Financial Aid

**CAPITAL BANK**

*Your financial partner through life's milestones*

Four convenient Fayetteville area locations

capitalbank-us.com | 800.308.3971

Equal Housing Lender

We are pleased that you are considering attending Methodist University. Because cost and financial aid are such an important part of the college decision, we have put together this information to acquaint you with the process of applying for and obtaining financial assistance.

Our goal is to make Methodist University an affordable option for you and your family through a variety of financial aid programs. Our commitment of over \$10 million of institutional funds for financial assistance shows how seriously we take this goal. To find out more about the financial assistance available at MU, visit: [www.methodist.edu/ingagepublication/publication.html](http://www.methodist.edu/ingagepublication/publication.html).

The offices of admissions and financial aid are here to help you at every step of the financial aid process. Do not hesitate to contact us if you have any questions!

**Rick Lowe**  
Vice President for Enrollment Services ■

2010-2011

# Academic Calendar

## FALL 2010

### NOVEMBER

Mon 1	Senior Early Registration begins
Tue 2	Junior Early Registration begins
Wed 3	Sophomore Early Registration begins
Thu 4	Freshman Early Registration begins
Wed-Sun 24-28	Thanksgiving Holiday
Mon 29	Last day to drop a class with WP or WF

### DECEMBER

Tue 7	Last day of class
Wed 8	Reading Day/Last Day to adjust Spring schedule
Thu-Thu 9-16	Final Examinations
Mon 13	Senior grades due to the Registrar by 1:00 p.m.
Sat 18	<ul style="list-style-type: none"> <li>Baccalaureate service at 10:30 a.m.</li> <li>Graduation 2:00 p.m.</li> <li>Residence halls close at 5:00 p.m.</li> </ul>
Mon 20	Final grades due

## SPRING 2011

### JANUARY

Sun 9	New resident students arrive/Orientation
Mon 10	Day classes and Drop/Add Period begin
Fri 14	Advisor Meeting for New Students at 11:00 a.m.
Mon 17	Martin Luther King Day holiday (no classes)
Tue 18	Last day to ADD a class Last day to DROP a class without record

### FEBRUARY

Mon 7	Spring Convocation
March	
Fri 4	Midterm grades due
Mon-Fri 7-11	Spring Break
Mon 21	Mandatory Academic Advisor Consultation at 11:00 a.m.
Mon 28	Senior Early Registration begins
Tue 29	Junior Early Registration begins
Wed 30	Sophomore Early Registration begins
Thu 31	Freshman Early Registration begins

### APRIL

Mon 4	Awards Day
Fri 15	"Intent to Graduate" forms for December graduation Due
Mon 18	Last day to drop a class with WP or WF
Fri 22	Good Friday (No Classes)
Tue 26	Last day of day classes
Wed 27	Reading Day
Thu-Thu 28-May 5	Final Examinations

### MAY

Mon 2	Senior grades (Day and Evening) due
Sat 7	<ul style="list-style-type: none"> <li>Baccalaureate service at 10:30 a.m.</li> <li>Graduation 2:00 p.m.</li> <li>Residence halls close at 5:00 p.m.</li> </ul>
Mon	9

# Helpful Phone Numbers

Operator (910) 630-7000 or (800) 488-7110  
 Emergency (910) 630-7577

Admissions	630-7027
Academic Affairs	630-7031
Academic Support Services	630-7151
Alumni Affairs	630-7167
Athletics	630-7175
Bookstore	630-7165
Business Office	630-7015
Campus Activities	630-7022
Campus Minister	630-7157
Campus Police and Public Safety	630-7149
Campus Recreation/Intramurals	630-7161
Career Center	630-7279
Community Service Programs	630-7161
Computer Lab	630-7300
Counseling Center	630-7150
Development Office/Gift Records	630-7200
Dining Services	488-2104



Financial Aid and Scholarships	630-7192
Health Center	630-7164
Leadership Training	630-7488
Maintenance	630-7199
Parents Programs	630-7022
Parking and Vehicle Registration	630-7149
Postal Services	630-7194
Public Relations	630-7043
Purchasing	630-7522
Registrar/Student Records	630-7035
Residence Life	630-7256
Student Employment	630-7279
Student Insurance	630-7652
Student Government	630-7108
Student Life	630-7152
Testing and Tutoring	630-7151
Welcome Center	630-7098

**BLACK'S TIRE & AUTO SERVICE**

North Carolina and South Carolina's Premier Tire Dealer

For 80 years, Black's Tire has served the people of Southeastern North Carolina and Northeastern South Carolina with quality products and services.

**JUST OUR RAMSEY ST. LOCATION!** (910) 488-2647 [www.blackstire.com](http://www.blackstire.com)

5012 Ramsey Street - Fayetteville, NC 28311

**Air Conditioning - Brakes - Custom Wheels - Exhaust Repair - Oil Lube & Filter  
 Steering & Alignment - Tires - Transmission Service - And More!**

**Comfort Inn**  
**FORT BRAGG - FAYETTEVILLE**

*New Rooms Waiting for You*

**FREE WIFI, Coffee & Continental Breakfast**

*Minutes from Methodist University*

*Call today for special rates and begin earning Rewards Points*

1922 Skibo Road - Fayetteville NC 28314  
**(910) 867-1777**  
[www.comfortfayetteville.com](http://www.comfortfayetteville.com)

- 1 Joe W. Stout Hall
- 2 Horner Administration Building
- 3 Trustees' Classroom Building
- 4 Margaret and Waifer Clark Hall, Reeves School of Business
- 5 Library Annex
- 6 Davis Memorial Library
- 7 Yarborough Bell Tower
- 8 Burns Student Center
- 9 John W. Hensdale Chapel
- 10 John M. Reeves Auditorium/Fine Arts Building
- 11 D. Keith Allison Hall
- 12 The Science Building
- 13 New Science Building
- 14 The President's Home
- 15 North Administration Building
- 51
- 16 Nimocks Fitness and Wellness Center
- 17 L. Stacy Weaver Hall
- 18 Bishop Paul Garber Hall
- 19 West Hall
- 20 Richard W. Pearce Hall
- 21 Lighted Basketball Courts
- 22 Fannie Farmer Park
- 23 Terry Sanford Hall
- 24 Cumberland Hall
- 25 March F. Riddle Athletics Center
- 26 Chris's House
- 27 Tennis Facility
- 28 Athletic Practice Field
- 29 Softball Field
- 30 Armstrong-Shelley Baseball Field
- 31 Pauline Longest Nature Trail
- 32 Richard L. Player Golf and Tennis Learning Center
- 33 Golf Practice Facility
- 34 Golf Course "Down Back"
- 35 McLean Residential Complex
- 36 Cape Fear Commons Residential Complex
- 37 Jordan Soccer Complex and Cape Fear Trail
- 38 The "Sink" Recreation Area
- 39 Monarch Stadium
- 40 Maintenance Facility
- 41 Football Field House
- 42 Monarch Soccerplex
- 43 Mallett-Rogers House
- 44 O'Hanlon Memorial Amphitheater
- 45 Campus Police/Public Safety/Office of Institutional Computing
- 46 Monarch Press/Center for Entrepreneurship/U.S. Army ROTC
- 47 The Pines Apartments
- 48 BB&T
- 49 Medical Science Complex (Physician Assistant Program)
- 50 William F. Bethune Center for Visual Arts, completion 2010
- 51 Coach Sink Field



5400 Ramsey Street  
 Fayetteville, North Carolina 28311  
 (800) 488-7110 www.methodist.edu



