

Longest Nature Trail

Jesse Leyble, Ian Davis, Drew Topoly, Jeremy Mcneil
Advisor: Dr. Denis Bauer

Problem:

The Cape Fear River Trail behind MU has been closed since 2016 due to safety issues mainly. But also other problems listed below.

Problem Constraints:

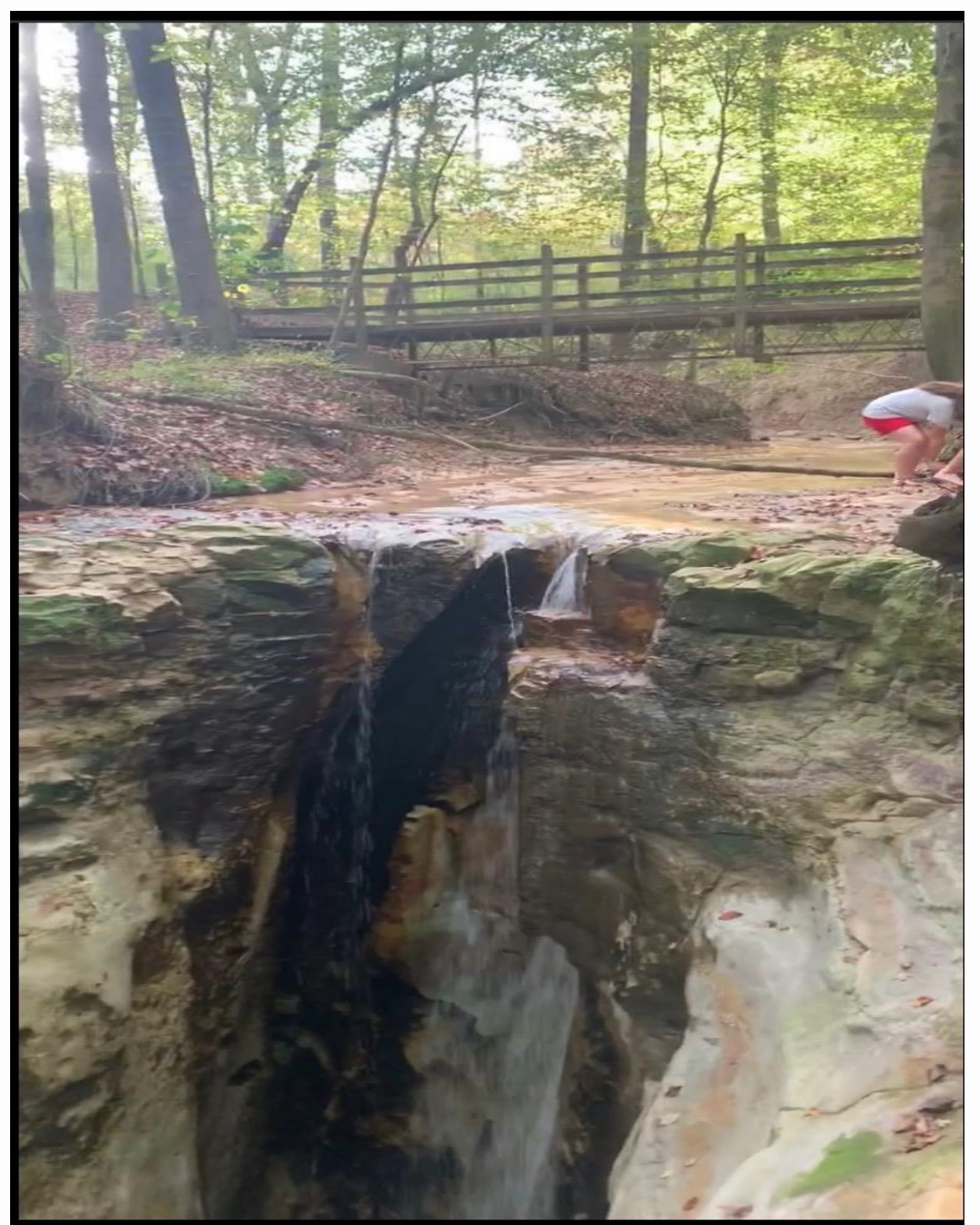
- Small area creates issues with using equipment
- Small budget could result in less getting done
- Weather causing more problems

Data Collection:

- Interviewed multiple coaches at MU
- Took a small survey from students
- Spoke to SAAC
- Talked to SGA

Data: (from observations)

- No clear path is defined
- Stairs and bridges falling apart
- Erosion causing more dangers for anyone on the trail
- Holes and roots creating hazards



Possible & Final Solution:

1. Redefine the path
2. Repair stairs and bridges
3. Repair losses from erosion
4. Prevent further erosion with vegetation/objects
5. Remove debris and trash from storms