

# PARKING ON METHODIST UNIVERSITY CAMPUS

## A Fight For Parking Blue vs Red

Riley Caudle, Tyree Brown, Andrew Bradshaw, Jaquan Hayes  
Advisor: Dr. Denise Bauer

## Problem Constraints/ Customer Needs

Determine if there is an alternative to create more parking in the PA/HS blue lot. That helps free up spaces for commuters and students in the red lot.

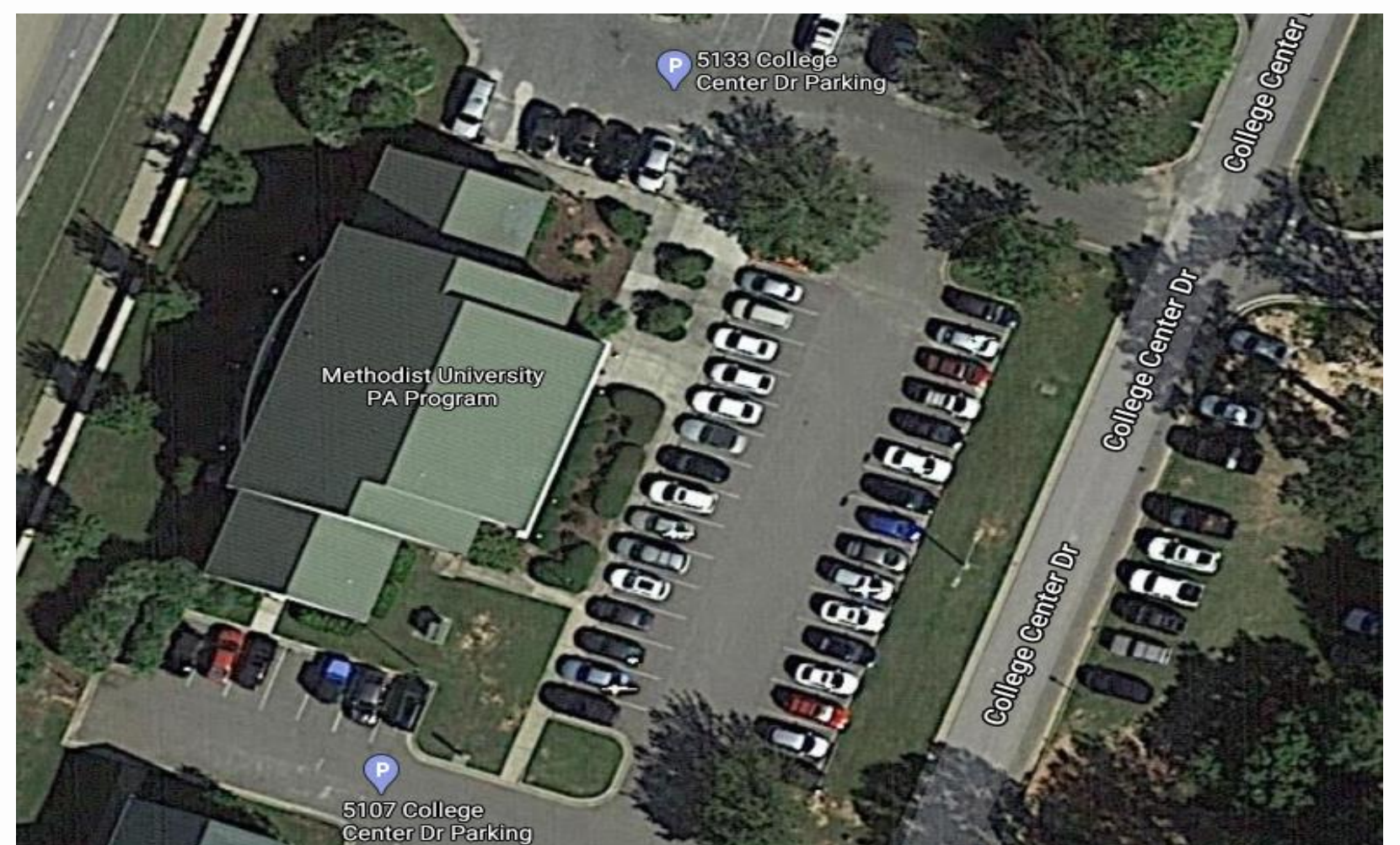
Problem: A shortage in parking spaces in blue lot leads to the students parking in the red lot. This causes the commuters students to park on the other side of the church.

## The Solution

Our Solution to compact the parking problem is to expand blue lot B.

## Things to think about

- ~ Look at the land
- ~ Environment/ Runoff
- ~ Construction (Paved or Gravel)



Alternatives	Price ( Approximately)
Expand Lot B (Gravel)	50k
Parking Lot (Stout Hall)	100k
Parking Deck	8.59M
Parking lot ( Green Lot)	200k

## Alternative Designs

Taking a look at the future of our school think about

- ~ A parking lot beside Stout Hall
- ~ Parking Deck in Red lot F
- ~ A huge parking lot behind green lots S, R, & Q

