

NVDA Download and User Guide

NVDA (Non Visual Desktop Access) is a free, open-source screen reader for Windows. This guide provides: Step-by-step instructions for using NVDA with Canvas - Demo/tutorial links and Accessibility-friendly formatting


Below is a link demonstrating how to install and download NVDA and directions.

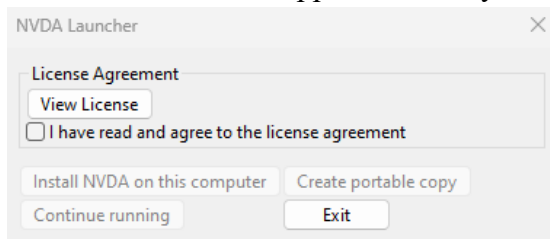
YouTube video demonstration link: <https://www.youtube.com/watch?v=Ngir4WCq0JM>

Directions:

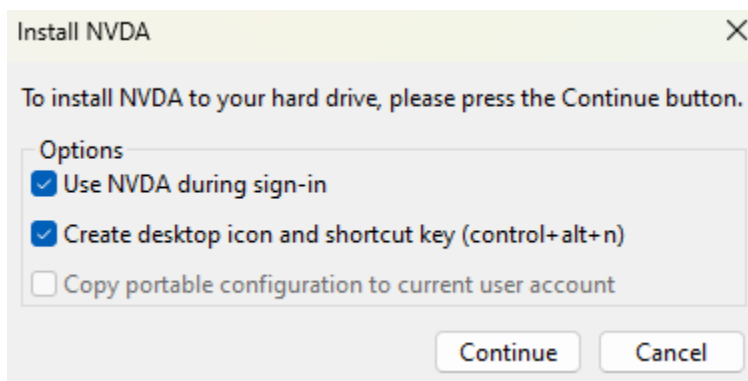
NVDA works best with Chrome.

Installing NVDA and Downloading NVDA

1. Go to the official NVDA website:
<https://www.nvaccess.org/download/>
2. Scroll down the page and select **Download**. 
3. When it shows it has been downloaded, open. The voice command will begin to speak.
4. NVDA launcher will appear and ask you to click license agreement.



5. Click the Install NVDA button.



6. Welcome to NVDA dialogue box will appear.
 - Be sure to select Keyboard layout.
 - Select Use Caps Lock as an NVDA modifier key.
7. To exit NVDA use Caps Lock and Q.

NVDA Basics How to Use

Launching NVDA

- Press **Ctrl + Alt + N** (default shortcut), or
- Search **NVDA** in Start Menu.

NVDA Modifier Key

A modifier key: called the NVDA Key (either the Insert or Caps Lock key on the keyboard) is combined with other keys for screen reader keyboard commands.

NVDA uses a “modifier key” for commands:

Default: **Insert**

Optional: **Caps Lock**

How It Works

1. **Press & Hold:** You typically press and hold the NVDA (Insert/Caps Lock) modifier key.
2. **Press Another Key:** While holding it, press another key for the command (e.g., NVDA + H for next heading).
3. **Double-Tap for Original Function:** Pressing the modifier key (like Caps Lock) twice quickly makes it act as its normal key (e.g., turning Caps Lock on).

Why It's Used

- It provides a dedicated set of shortcuts without interfering with standard application shortcuts.
- It allows for quick access to screen reader functions like reading all text, navigating elements, and adjusting speech settings.

Turn NVDA on or off

On: **Control + Alt + N**

Off: **Cap+ Q**

Note: Once NVDA is turned on, the behavior of your keyboard keys will change. For example, you will not be able to use CAPS LOCK to capitalize text while NVDA is on.

Read All Content

Use the CAPS LOCK + Down Arrow key to start reading all page content.

Change How Fast NVDA Talks

Using a slower speaking rate can help with comprehension as you listen during testing.

1. Use CAPS LOCK + N to open NVDA Menu
2. Select Preferences and then Settings
3. Select Speech and adjust Rate slower

Turn NVDA on or off

ON: Control + Alt + N

OFF: CAPS + Q

Note: Once NVDA is turned on, the behavior of your keyboard keys will change. For example, you won't be able to use CAPS LOCK to capitalize text while NVDA is on.

Key Commands (Essential)

- **NVDA + H** — Help menu
- **NVDA + N** — NVDA Menu
- **NVDA + S** — Cycle speech mode
- **NVDA + F7** — Elements list (links, headings, form fields)
- **NVDA + Up Arrow** — Read current line
- **NVDA + Down Arrow** — Read continuously